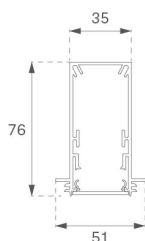


F31TR168LOOP830DW



FIL35 TRIM 1680 2400 WW OPAL DALI WH.

Description:

Structure to recessed model FIL35 TRIM 1680 LAMP brand. Made in extruded recycled aluminum with a rate of 80%, with opal polycarbonate diffuser. Model for LED MID-POWER, colour temperature 3000K with CRI80 and with electronic wiring Dali included. With IP43, IK07 protection rating. Insulation Class I. Photobiological safety group 0. LED lifetime: 50.000 L90 B10. Available finishes: White, black and grey. Environmental Product Declaration - EPD@available, according to UNE-EN ISO 9001:2015 and UNE-EN ISO 14001:2015.

Finish: Matte white RAL 9010

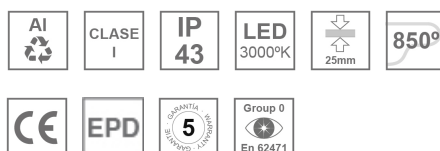
Dimensions: 1.680 x 51 x 76 mm

Weight: 4.000 g

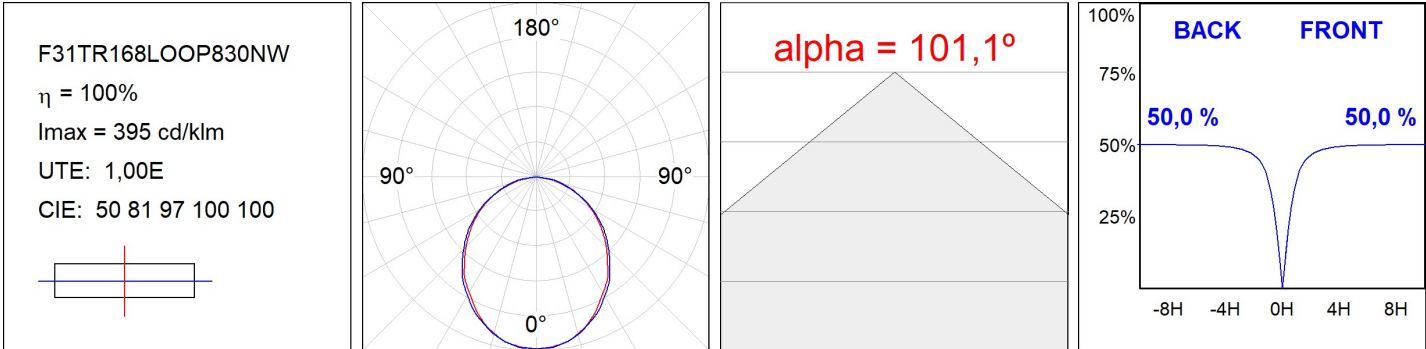
Installation: Recessed

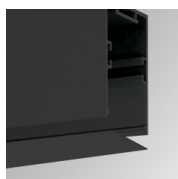
Recessing measures: 1,687 x 52 x 0 mm
TECHNICAL SPECIFICATIONS:

Light output:	1.733 lm	°K :	3000
Plum:	17,1W	CRI :	80
Efficacy:	101,3 lm/w	MacAdam:	3
UGR:	<19	Power Supply:	220-240V 50/60Hz
Type:	MID POWER LED	Gear:	Adjustable DALI
LED Lifetime:	50.000 L90 B10 (Ta=25°C)		
Power:	16W		

Light output tolerance +/- 10%
**CUSTOM MADE OPTIONS:**

PHOTOMETRIC DATA :

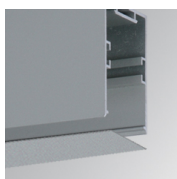


ACCESSORIES :
Assembly**Product code:**

F3COX/MMB

Description:

FIL 35 ACC. COVER X/MM BK.

**Product code:**

F3COX/MMG

Description:

FIL 35 ACC. COVER X/MM GR.

**Product code:**

F3COX/MMW

Description:

FIL 35 ACC. COVER X/MM WH.

**Product code:**

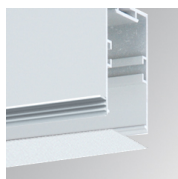
F3JO

Description:

FIL35 ACC. INTM JOINT B

F3REJO

FIL35 ACC. INTM JOINT B RECESSED

**Product code:**

F3PRTRX/MMW

Description:

FIL 35 ACC. TRIMLESS PROFIL X/MM WH.

**Product code:**

F3SUECB

Description:

FIL35 ACC. SUR END COVER BK.

**Product code:**

F3SUECG

Description:

FIL35 ACC. SUR END COVER GR.

**Product code:**

F3SUECW

Description:

FIL35 ACC. SUR END COVER WH.

**Product code:**

F3TRECW

Description:

FIL35 ACC. TRIM END COVER WH.

ACCESSORIES :
Optical

FIL35



Product code:

F3DIX/MMOP

Description:

FIL 35 ACC. OPAL DIFFUSER X/MM