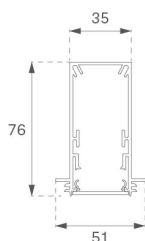


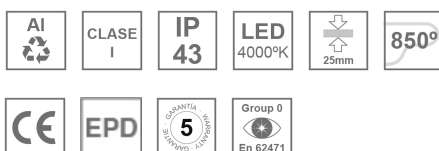
F31TR140LOOC840NW

**FIL35 TRIM 1400 2000 NW OP COMF WH.****Description:**

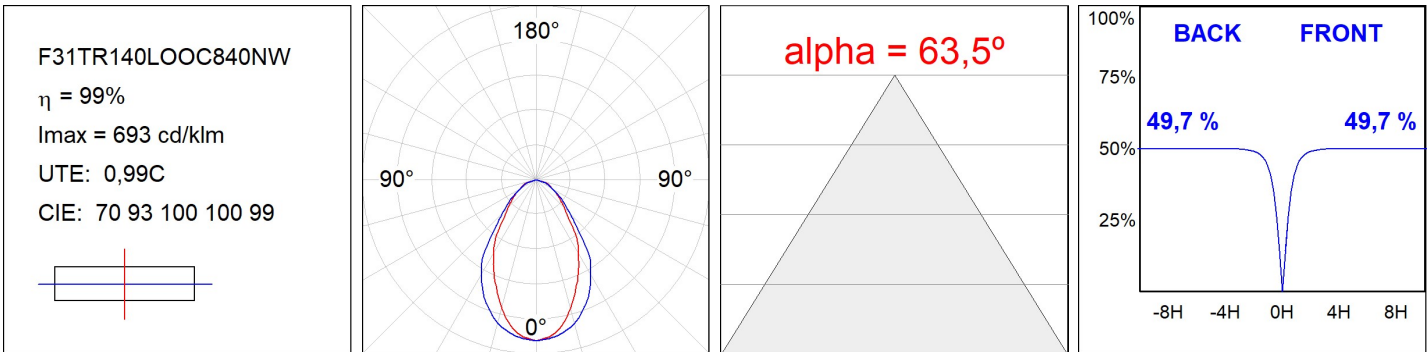
Structure to recessed model FIL35 TRIM 1400 LAMP brand. Made in extruded recycled aluminum with a rate of 80%, with and opal comfort diffuser made of a translucent polycarbonate diffuser and an optical film to achieve a controlled light distribution and low UGR<19. Model for LED MID-POWER, colour temperature 4000K with CRI80 and with electronic wiring included. With IP43, IK07 protection rating. Insulation Class I. Photobiological safety group 0. LED lifetime: 50.000 L90 B10. Available finishes: White, black and grey. Environmental Product Declaration - EPD@available, according to UNE-EN ISO 9001:2015 and UNE-EN ISO 14001:2015.

Finish: Matte white RAL 9010**Dimensions:** 1.400 x 51 x 76 mm**Weight:** 3.350 g**Installation:** Recessed**Recessing measures:** 1,407 x 52 x 0 mm**TECHNICAL SPECIFICATIONS:**

| | | | |
|----------------------|--------------------------|----------------------|------------------|
| Light output: | 1.390 lm | °K : | 4000 |
| Plum: | 14,4W | CRI : | 80 |
| Efficacy: | 96,5 lm/w | MacAdam: | 3 |
| UGR: | <19 | Power Supply: | 220-240V 50/60Hz |
| Type: | MID POWER LED | Gear: | Electronic |
| LED Lifetime: | 50.000 L90 B10 (Ta=25°C) | | |
| Power: | 14W | | |

Light output tolerance +/- 10%**CUSTOM MADE OPTIONS:**

PHOTOMETRIC DATA :



ACCESORIES :**Assembly****Product code:**

F3COX/MMB

Description:

FIL 35 ACC. COVER X/MM BK.

**Product code:**

F3COX/MMG

Description:

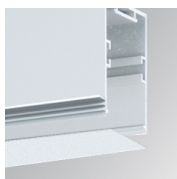
FIL 35 ACC. COVER X/MM GR.

**Product code:**

F3COX/MMW

Description:

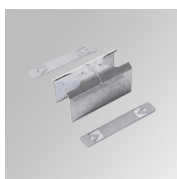
FIL 35 ACC. COVER X/MM WH.

**Product code:**

F3PRTRX/MMW

Description:

FIL 35 ACC. TRIMLESS PROFIL X/MM WH.

**Product code:**

F3REJO

Description:

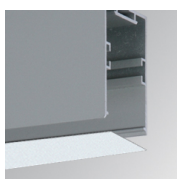
FIL35 ACC. INTM JOINT B RECESSED

**Product code:**

F3TRECW

Description:

FIL35 ACC. TRIM END COVER WH.

ACCESORIES :**Optical****Product code:**

F3DIX/MMOP

Description:

FIL 35 ACC. OPAL DIFFUSER X/MM