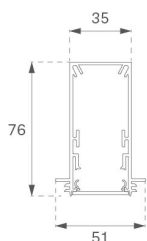


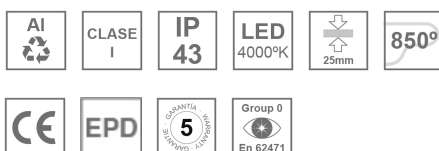
F31TR084LOOC840DW

**FIL35 TRIM 840 1200 NW OP COMF DALI WH.****Description:**

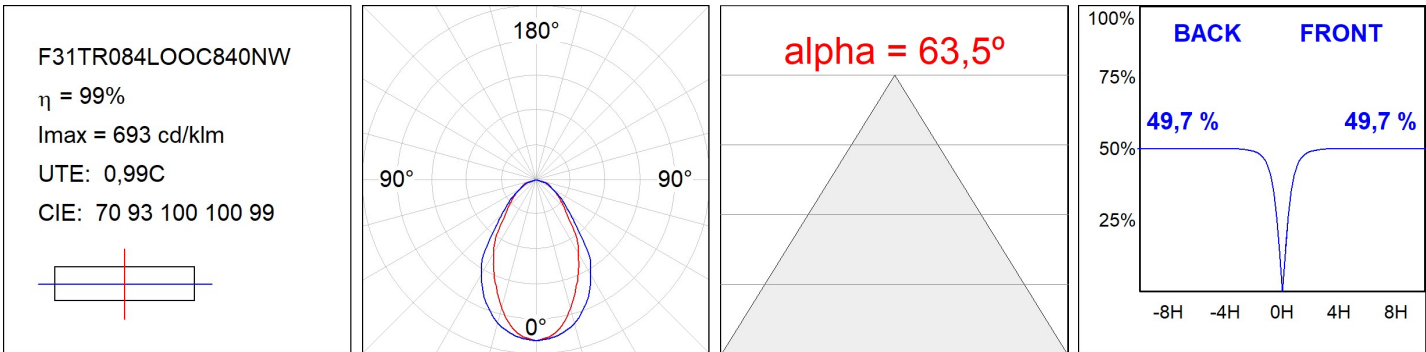
Structure to recessed model FIL35 TRIM 840 LAMP brand. Made in extruded recycled aluminum with a rate of 80%, with and opal comfort diffuser made of a translucent polycarbonate diffuser and an optical film to achieve a controlled light distribution and low UGR<19. Model for LED MID-POWER, colour temperature 4000K with CRI80 and with electronic wiring Dali included. With IP43, IK07 protection rating. Insulation Class I. Photobiological safety group 0. LED lifetime: 50.000 L90 B10. Available finishes: White, black and grey. Environmental Product Declaration - EPD@available, according to UNE-EN ISO 9001:2015 and UNE-EN ISO 14001:2015.

**Finish:** Matte white RAL 9010**Dimensions:** 840 x 51 x 76 mm**Weight:** 2.000 g**Installation:** Recessed**Recessing measures:** 847 x 52 x 0 mm**TECHNICAL SPECIFICATIONS:**

<b>Light output:</b>	834 lm	<b>°K :</b>	4000
<b>Plum:</b>	8,8W	<b>CRI :</b>	80
<b>Efficacy:</b>	94,8 lm/w	<b>MacAdam:</b>	3
<b>UGR:</b>	<19	<b>Power Supply:</b>	220-240V 50/60Hz
<b>Type:</b>	MID POWER LED	<b>Gear:</b>	Adjustable DALI
<b>LED Lifetime:</b>	50.000 L90 B10 (Ta=25°C)		
<b>Power:</b>	8W		

**Light output tolerance +/- 10%****CUSTOM MADE OPTIONS:**

PHOTOMETRIC DATA :



---

**ACCESORIES :**
**Assembly****Product code:**

F3COX/MMB

**Description:**

FIL 35 ACC. COVER X/MM BK.

**Product code:**

F3COX/MMG

**Description:**

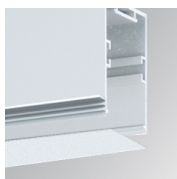
FIL 35 ACC. COVER X/MM GR.

**Product code:**

F3COX/MMW

**Description:**

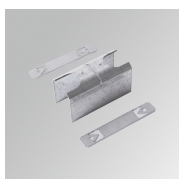
FIL 35 ACC. COVER X/MM WH.

**Product code:**

F3PRTRX/MMW

**Description:**

FIL 35 ACC. TRIMLESS PROFIL X/MM WH.

**Product code:**

F3REJO

**Description:**

FIL35 ACC. INTM JOINT B RECESSED

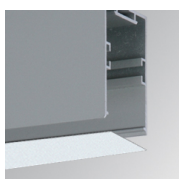
**Product code:**

F3TRECW

**Description:**

FIL35 ACC. TRIM END COVER WH.

---

**ACCESORIES :**
**Optical****Product code:**

F3DIX/MMOP

**Description:**

FIL 35 ACC. OPAL DIFFUSER X/MM