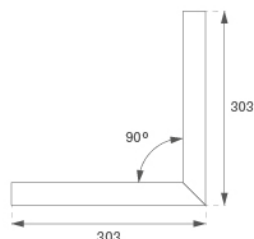


F31SFHCLOOP840NW

**FIL35 HORIZ. CORNER SUR 800 NW OPAL WH.****Description:**

Suspended or mounted surface structure model FIL35 HORIZ CORNER SUR LAMP brand. Made in extruded recycled aluminum with a rate of 80%, with opal polycarbonate diffuser. Model for LED MID-POWER, colour temperature 4000K with CRI80 and with electronic wiring included. With IP20, IK07 protection rating. Insulation Class I. Photobiological safety group 0. LED lifetime: 60.000 L80 B10. Available finishes: White, black and grey.

Finish: Matte white RAL 9010**Weight:** 1.230 g**Installation:** Surface**TECHNICAL SPECIFICATIONS:**

Light output:	577 lm	°K :	4000
Plum:	6,1W	CRI :	80
Efficacy:	94,6 lm/w	MacAdam:	3
Type:	MID POWER TRIDONIC	Power Supply:	220-240V 50/60Hz
LED Lifetime:	60.000 L80 B10 (Ta=25°C)	Gear:	Electronic
Power:	5W		

Light output tolerance +/- 10%**CUSTOM MADE OPTIONS:**

ACCESORIES :

Assembly

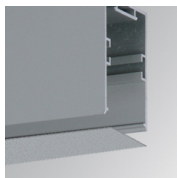


Product code:

F3COX/MMB

Description:

FIL 35 ACC. COVER X/MM BK.

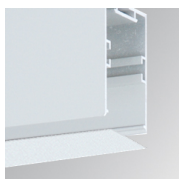


Product code:

F3COX/MMG

Description:

FIL 35 ACC. COVER X/MM GR.

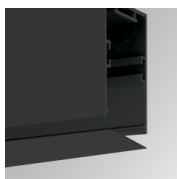


Product code:

F3COX/MMW

Description:

FIL 35 ACC. COVER X/MM WH.

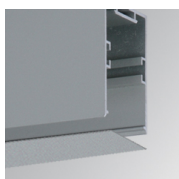


Product code:

F3PRSUX/MMB

Description:

FIL 35 ACC. SUS PROFIL X/MM BK.



Product code:

F3PRSUX/MMG

Description:

FIL 35 ACC. SUS PROFIL X/MM GR.



Product code:

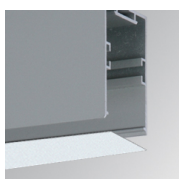
F3PRSUX/MMW

Description:

FIL 35 ACC. SUS PROFIL X/MM WH.

ACCESORIES :

Optical



Product code:

F3DIX/MMOP

Description:

FIL 35 ACC. OPAL DIFFUSER X/MM