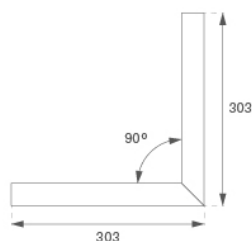
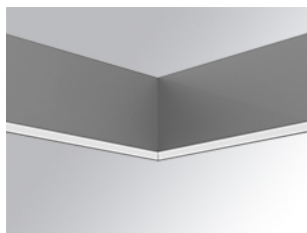


F31SFHCLOOP830DG



FIL35 HORIZ. CORNER SUR 800 WW OPAL DA G

Description:

Suspended or mounted surface structure model FIL35 HORIZ CORNER SUR LAMP brand. Made in extruded recycled aluminum with a rate of 80%, with opal polycarbonate diffuser. Model for LED MID-POWER, colour temperature 3000K with CRI80 and with electronic wiring Dali included. With IP43, except for suspended installation, which becomes IP20, IK07 protection rating. Insulation Class I. Photobiological safety group 0. LED lifetime: 60.000 L80 B10. Available finishes: White, black and grey. Environmental Product Declaration - EPD@available, according to UNE-EN ISO 9001:2015 and UNE-EN ISO 14001:2015.

Finish: Gloss grey

Weight: 1.230 g

Installation: Surface
TECHNICAL SPECIFICATIONS:

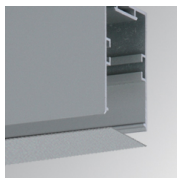
Light output:	577 lm	°K :	3000
Plum:	6,1W	CRI :	80
Efficacy:	94,6 lm/w	MacAdam:	3
Type:	MID POWER LED	Power Supply:	220-240V 50/60Hz
LED Lifetime:	60.000 L80 B10 (Ta=25°C)	Gear:	Adjustable DALI
Power:	5W		

Light output tolerance +/- 10%
**CUSTOM MADE OPTIONS:**

ACCESSORIES :
Assembly

Product code:
F3COX/MMB

Description:
FIL 35 ACC. COVER X/MM BK.



Product code:
F3COX/MMG

Description:
FIL 35 ACC. COVER X/MM GR.



Product code:
F3COX/MMW

Description:
FIL 35 ACC. COVER X/MM WH.



Product code:
F3FX50B

Description:
ACC. WALL BRACKET FIL45 50MM BK.



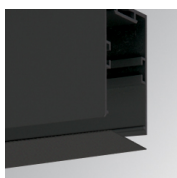
Product code:
F3FX50G

Description:
ACC. WALL BRACKET FIL35 50MM GR.



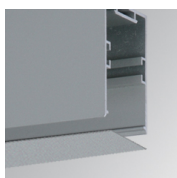
Product code:
F3FX50W

Description:
ACC. WALL BRACKET FIL35 50MM WH.



Product code:
F3PRSUX/MMB

Description:
FIL 35 ACC. SUS PROFIL X/MM BK.



Product code:
F3PRSUX/MMG

Description:
FIL 35 ACC. SUS PROFIL X/MM GR.



Product code:
F3PRSUX/MMW

Description:
FIL 35 ACC. SUS PROFIL X/MM WH.

ACCESSORIES :
Support

FIL35



Product code:

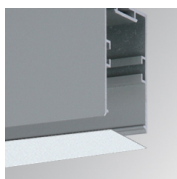
F3FX15G

Description:

ACC. CEILING BRACKET FIL35 15MM GR.

ACCESORIES :

Optical



Product code:

F3DIX/MMOP

Description:

FIL 35 ACC. OPAL DIFFUSER X/MM