

F31SF196LOIC840DW

**FIL35 SUR 1960 2800 NW D/I COMF DALI WH.****Description:**

Suspended structure model FIL35 SUR 1960 2800 NW D/I OP COMF DALI WH. LAMP brand. Made of extruded aluminium painted in matt white. Indirect-direct light. With an opal comfort diffuser made of a translucent polycarbonate diffuser and an optical film to achieve a controlled light distribution and low glare level, less than UGR 19. Model for LED MID-POWER, neutral white color temperature and control DALI gear included. With IP20, IK07 protection rating. Insulation class I. Photobiological safety group 0.

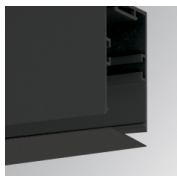
Finish: Matte white RAL 9010

Dimensions: 1.960 x 35 x 80 mm

Installation: Suspended
TECHNICAL SPECIFICATIONS:

Light output:	3.997 lm	°K :	4000
Plum:	36,2W	CRI :	80
Efficacy:	109,5 lm/w	MacAdam:	3
UGR:	19	Power Supply:	220-240V 50/60Hz
Type:	MID POWER TRIDONIC	Gear:	Adjustable DALI
LED Lifetime:	50.000 L90 B10 (Ta=25°C)		
Power:	32W		

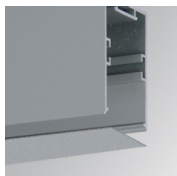
Light output tolerance +/- 10%
CUSTOM MADE OPTIONS:

ACCESORIES :
Assembly**Product code:**

F3COX/MMB

Description:

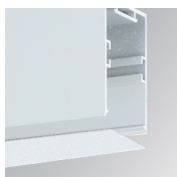
FIL 35 ACC. COVER X/MM BK.

**Product code:**

F3COX/MMG

Description:

FIL 35 ACC. COVER X/MM GR.

**Product code:**

F3COX/MMW

Description:

FIL 35 ACC. COVER X/MM WH.

**Product code:**

F3SUECB

Description:

FIL35 ACC. SUR END COVER BK.

**Product code:**

F3SUECG

Description:

FIL35 ACC. SUR END COVER GR.

**Product code:**

F3SUECW

Description:

FIL35 ACC. SUR END COVER WH.

ACCESORIES :
Suspension**Product code:**

F3SUWIDE1000G

Description:

FIL35 ACC. QUICK STEEL CABLE 1M NK.

**Product code:**

F3SUWIDE4000G

Description:

FIL35 ACC. QUICK STEEL CABLE 4M NK.