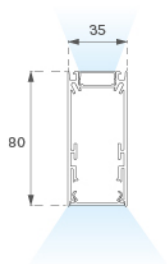
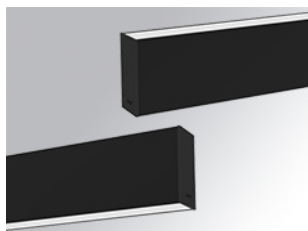


F31SF168MOIO830NB



**FIL35 SUR 1680 6640 WW D/I OPAL BK.**

**Description:**

Suspended structure model FIL35 SUR 1680 D/I LAMP brand. Made in extruded recycled aluminum with a rate of 80%, with an opal comfort diffuser made of a translucent polycarbonate diffuser and an optical film to achieve a controlled light distribution and low glare level, less than UGR 19. Model for LED MID-POWER, colour temperature 3000K with CRI80 and with electronic wiring included. With IP20, IK07 protection rating. Insulation Class I. Photobiological safety group 0. LED lifetime: 50.000 L80 B10. Available finishes: White, black and grey. Environmental Product Declaration - EPD@available, according to UNE-EN ISO 9001:2015 and UNE-EN ISO 14001:2015.

**Finish:** Matte black RAL 9011

**Dimensions:** 1.680 x 35 x 80 mm

**Weight:** 3.650 g

**Installation:** Surface

**TECHNICAL SPECIFICATIONS:**

<b>Light output:</b>	4.217 lm	<b>°K :</b>	3000
<b>Plum:</b>	40,4W	<b>CRI :</b>	80
<b>Efficacy:</b>	104,4 lm/w	<b>MacAdam:</b>	3
<b>Type:</b>	MID POWER LED	<b>Power Supply:</b>	220-240V 50/60Hz
<b>LED Lifetime:</b>	70.000 L80 B10 (Ta=25°C)	<b>Gear:</b>	Electronic
<b>Power:</b>	36W		

*Light output tolerance +/- 10%*

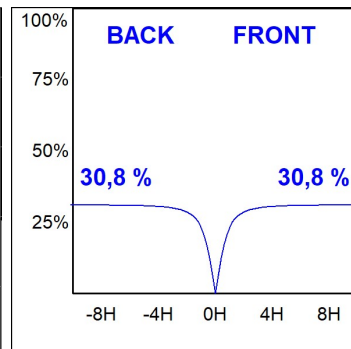
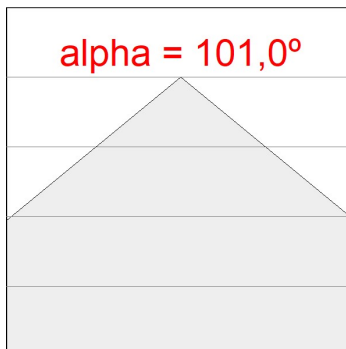
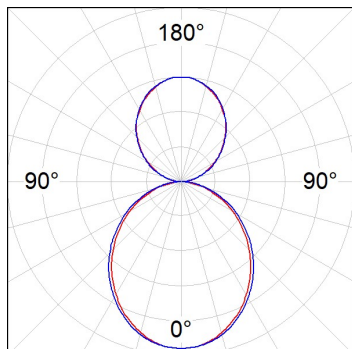


**CUSTOM MADE OPTIONS:**



PHOTOMETRIC DATA :

F31SF168MOIO830NB  
 $\eta = 100\%$   
 $I_{max} = 240 \text{ cd/klm}$   
UTE: 0,62E + 0,39T  
CIE: 49 81 97 61 100



**ACCESSORIES :**

**Assembly**



**Product code:**  
F3COX/MMB

**Description:**  
FIL 35 ACC. COVER X/MM BK.



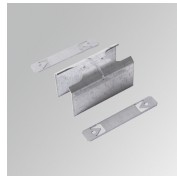
**Product code:**  
F3COX/MMG

**Description:**  
FIL 35 ACC. COVER X/MM GR.



**Product code:**  
F3COX/MMW

**Description:**  
FIL 35 ACC. COVER X/MM WH.



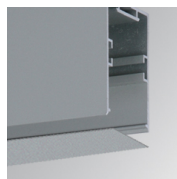
**Product code:**  
F3JO

**Description:**  
FIL35 ACC. INTM JOINT B



**Product code:**  
F3PRSUX/MMB

**Description:**  
FIL 35 ACC. SUS PROFIL X/MM BK.



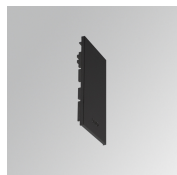
**Product code:**  
F3PRSUX/MMG

**Description:**  
FIL 35 ACC. SUS PROFIL X/MM GR.



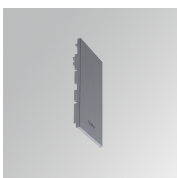
**Product code:**  
F3PRSUX/MMW

**Description:**  
FIL 35 ACC. SUS PROFIL X/MM WH.



**Product code:**  
F3SUECB

**Description:**  
FIL35 ACC. SUR END COVER BK.



**Product code:**  
F3SUECG

**Description:**  
FIL35 ACC. SUR END COVER GR.



**Product code:**  
F3SUECW

**Description:**  
FIL35 ACC. SUR END COVER WH.

**ACCESSORIES :**

**Suspension**



**Product code:**  
F3SUCAEMFA1000NB  
F3SUCAEMFA4000NB

**Description:**  
ACC. ELECMEC FIL35 QUICK SUSP 1M BK.  
ACC. ELECMEC FIL35 QUICK SUSP 4M BK.



**Product code:**  
F3SUCAEMFA1000NG  
F3SUCAEMFA4000NG

**Description:**  
ACC. ELECMEC FIL35 QUICK SUSP 1M GR.  
ACC. ELECMEC FIL35 QUICK SUSP 4M GR.



**Product code:**  
F3SUCAEMFA1000NW  
F3SUCAEMFA4000NW

**Description:**  
ACC. ELECMEC FIL35 QUICK SUSP 1M WH.  
ACC. ELECMEC FIL35 QUICK SUSP 4M WH.



**Product code:**  
F3SUCAWI1000DB  
F3SUCAWI4000DB

**Description:**  
ACC. ELECMEC FIL35 QUICK SUSP 1M 5P BK.  
ACC. ELECMEC FIL35 QUICK SUSP 4M 5P BK.



**Product code:**  
F3SUCAWI1000DG  
F3SUCAWI4000DG

**Description:**  
ACC. ELECMEC FIL35 QUICK SUSP 1M 5P GR.  
ACC. ELECMEC FIL35 QUICK SUSP 4M 5P GR.



**Product code:**  
F3SUCAWI1000DW  
F3SUCAWI4000DW

**Description:**  
ACC. ELECMEC FIL35 QUICK SUSP 1M 5P WH.  
ACC. ELECMEC FIL35 QUICK SUSP 4M 5P WH.



**Product code:**  
F3SUWIDE1000G

**Description:**  
FIL35 ACC. QUICK STEEL CABLE 1M NK.

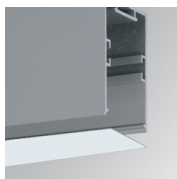


**Product code:**  
F3SUWIDE4000G

**Description:**  
FIL35 ACC. QUICK STEEL CABLE 4M NK.

**ACCESSORIES :**

**Optical**



**Product code:**  
F3DIX/MMOP

**Description:**  
FIL 35 ACC. OPAL DIFFUSER X/MM