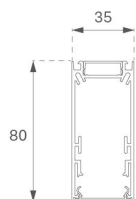
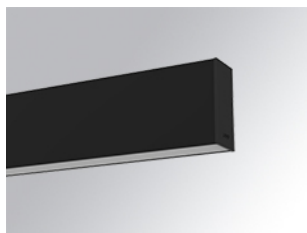


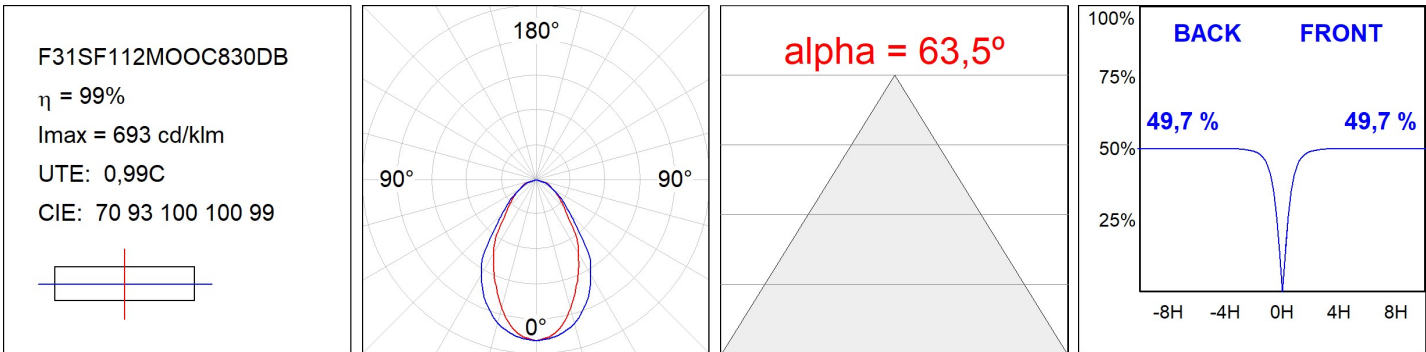
F31SF112MOOC830DB

**FIL35 SUR 1120 2960 WW OP COMF DALI BK.****Description:**

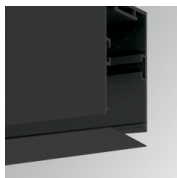
Suspended or mounted structure model FIL35 SUR 1120 LAMP brand. Made in extruded recycled aluminum with a rate of 80%, with and opal comfort diffuser made of a translucent polycarbonate diffuser and an optical film to achieve a controlled light distribution and low UGR<19. Model for LED MID-POWER, colour temperature 3000K with CRI80 and with electronic wiring Dali included. With IP20, IK07 protection rating. Insulation Class I. Photobiological safety group 0. LED lifetime: 70.000 L90 B10. Available finishes: White, black and grey. Environmental Product Declaration - EPD@available, according to UNE-EN ISO 9001:2015 and UNE-EN ISO 14001:2015.

**Finish:** Matte black RAL 9011**Dimensions:** 1.120 x 35 x 80 mm**Weight:** 2.435 g**Installation:** Surface**TECHNICAL SPECIFICATIONS:****Light output:** 1.571 lm**Plum:** 18W**Efficacy:** 87,3 lm/w**UGR:** <19**Type:** MID POWER LED**LED Lifetime:** 70.000 L80 B10 (Ta=25°C)**Power:** 16W**°K :** 3000**CRI :** 80**MacAdam:** 3**Power Supply:** 220-240V 50/60Hz**Gear:** Adjustable DALI**Light output tolerance +/- 10%****CUSTOM MADE OPTIONS:**

PHOTOMETRIC DATA :



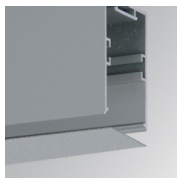
---

**ACCESSORIES :**
**Assembly****Product code:**

F3COX/MMB

**Description:**

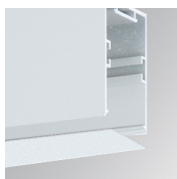
FIL 35 ACC. COVER X/MM BK.

**Product code:**

F3COX/MMG

**Description:**

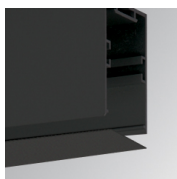
FIL 35 ACC. COVER X/MM GR.

**Product code:**

F3COX/MMW

**Description:**

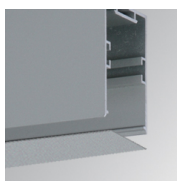
FIL 35 ACC. COVER X/MM WH.

**Product code:**

F3PRSUX/MMB

**Description:**

FIL 35 ACC. SUS PROFIL X/MM BK.

**Product code:**

F3PRSUX/MMG

**Description:**

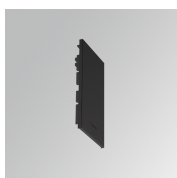
FIL 35 ACC. SUS PROFIL X/MM GR.

**Product code:**

F3PRSUX/MMW

**Description:**

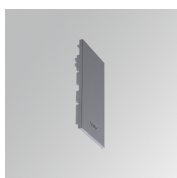
FIL 35 ACC. SUS PROFIL X/MM WH.

**Product code:**

F3SUECB

**Description:**

FIL35 ACC. SUR END COVER BK.

**Product code:**

F3SUECG

**Description:**

FIL35 ACC. SUR END COVER GR.

**Product code:**

F3SUECW

**Description:**

FIL35 ACC. SUR END COVER WH.

---

**ACCESSORIES :**
**Suspension**

FIL35



Product code:

F3SUWIDE1000G

Description:

FIL35 ACC. QUICK STEEL CABLE 1M NK.



Product code:

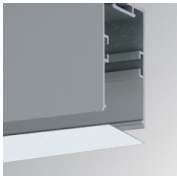
F3SUWIDE4000G

Description:

FIL35 ACC. QUICK STEEL CABLE 4M NK.

ACCESORIES :

Optical



Product code:

F3DIX/MMOP

Description:

FIL 35 ACC. OPAL DIFFUSER X/MM