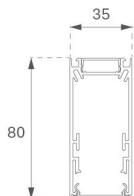
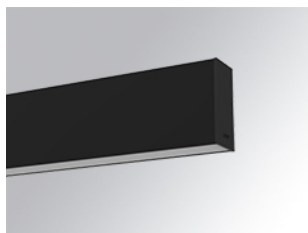


F31SF084MOOC830NW



FIL35 SUR 840 2220 WW OP COMF WH.

Description:

Suspended or mounted structure model FIL35 SUR 840 LAMP brand. Made in extruded recycled aluminum with a rate of 80%, with and opal comfort diffuser made of a translucent polycarbonate diffuser and an optical film to achieve a controlled light distribution and low UGR<19. Model for LED MID-POWER, colour temperature 3000K with CRI80 and with electronic wiring included. With IP20, IK07 protection rating. Insulation Class I. Photobiological safety group 0. LED lifetime: 70.000 L80 B10. Available finishes: White, black and grey. Environmental Product Declaration - EPD@available, according to UNE-EN ISO 9001:2015 and UNE-EN ISO 14001:2015.

Finish: Matte white RAL 9010

Dimensions: 840 x 35 x 80 mm

Weight: 1.760 g

Installation: Surface

TECHNICAL SPECIFICATIONS:

Light output:	1.179 lm	°K :	3000
Plum:	13,5W	CRI :	80
Efficacy:	87,3 lm/w	MacAdam:	3
UGR:	<19	Power Supply:	220-240V 50/60Hz
Type:	MID POWER LED	Gear:	Electronic
LED Lifetime:	70.000 L80 B10 (Ta=25°C)		
Power:	12W		

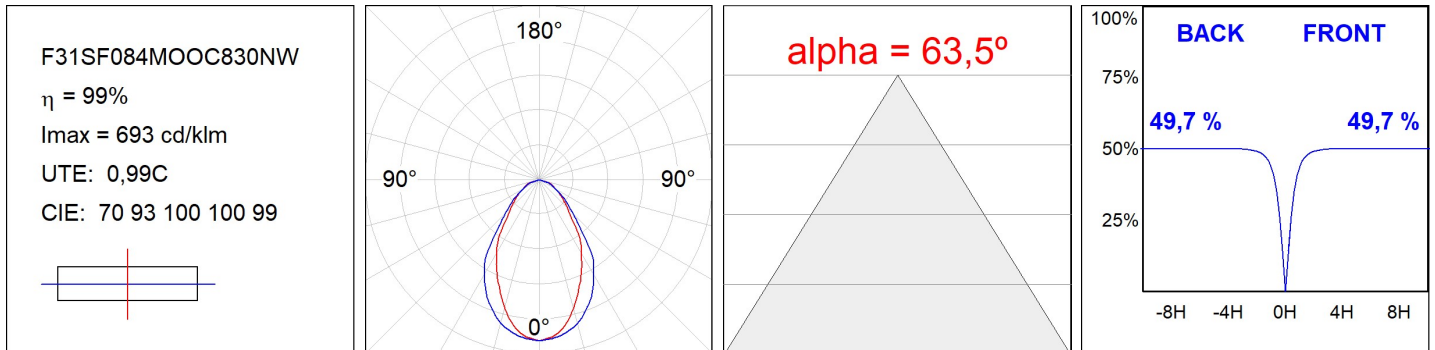
Light output tolerance +/- 10%



CUSTOM MADE OPTIONS:



PHOTOMETRIC DATA :



ACCESSORIES :

Assembly



Product code:
F3COX/MMB

Description:
FIL 35 ACC. COVER X/MM BK.



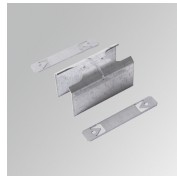
Product code:
F3COX/MMG

Description:
FIL 35 ACC. COVER X/MM GR.



Product code:
F3COX/MMW

Description:
FIL 35 ACC. COVER X/MM WH.



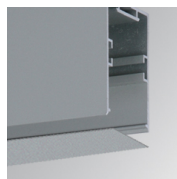
Product code:
F3JO

Description:
FIL35 ACC. INTM JOINT B



Product code:
F3PRSUX/MMB

Description:
FIL 35 ACC. SUS PROFIL X/MM BK.



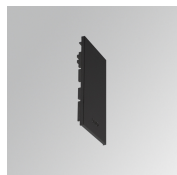
Product code:
F3PRSUX/MMG

Description:
FIL 35 ACC. SUS PROFIL X/MM GR.



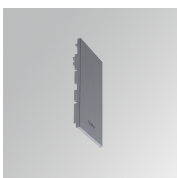
Product code:
F3PRSUX/MMW

Description:
FIL 35 ACC. SUS PROFIL X/MM WH.



Product code:
F3SUECB

Description:
FIL35 ACC. SUR END COVER BK.



Product code:
F3SUECG

Description:
FIL35 ACC. SUR END COVER GR.



Product code:
F3SUECW

Description:
FIL35 ACC. SUR END COVER WH.

ACCESSORIES :

Suspension

FIL35



Product code:
F3SUCAEMFA1000NB
F3SUCAEMFA4000NB

Description:
ACC. ELECMEC FIL35 QUICK SUSP 1M BK.
ACC. ELECMEC FIL35 QUICK SUSP 4M BK.



Product code:
F3SUCAEMFA1000NG
F3SUCAEMFA4000NG

Description:
ACC. ELECMEC FIL35 QUICK SUSP 1M GR.
ACC. ELECMEC FIL35 QUICK SUSP 4M GR.



Product code:
F3SUCAEMFA1000NW
F3SUCAEMFA4000NW

Description:
ACC. ELECMEC FIL35 QUICK SUSP 1M WH.
ACC. ELECMEC FIL35 QUICK SUSP 4M WH.



Product code:
F3SUCAWI1000DB
F3SUCAWI4000DB

Description:
ACC. ELECMEC FIL35 QUICK SUSP 1M 5P BK.
ACC. ELECMEC FIL35 QUICK SUSP 4M 5P BK.



Product code:
F3SUCAWI1000DG
F3SUCAWI4000DG

Description:
ACC. ELECMEC FIL35 QUICK SUSP 1M 5P GR.
ACC. ELECMEC FIL35 QUICK SUSP 4M 5P GR.



Product code:
F3SUCAWI1000DW
F3SUCAWI4000DW

Description:
ACC. ELECMEC FIL35 QUICK SUSP 1M 5P WH.
ACC. ELECMEC FIL35 QUICK SUSP 4M 5P WH.



Product code:
F3SUWIDE1000G

Description:
FIL35 ACC. QUICK STEEL CABLE 1M NK.

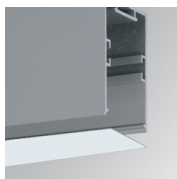


Product code:
F3SUWIDE4000G

Description:
FIL35 ACC. QUICK STEEL CABLE 4M NK.

ACCESSORIES :

Optical



Product code:
F3DIX/MMOP

Description:
FIL 35 ACC. OPAL DIFFUSER X/MM