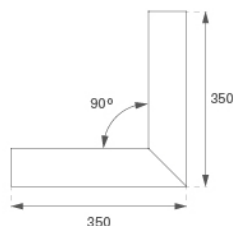
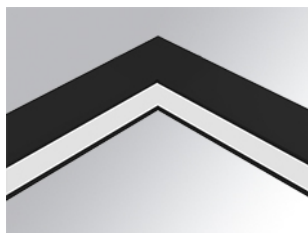


## F31REVCILLOOP830DB



## FIL35 VERT IN CORNER REC 800 WW OP DA BK

**Description:**

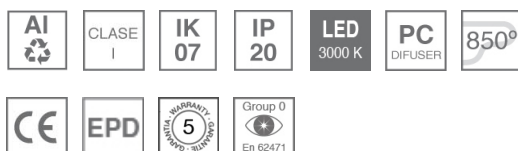
Structure to recessed model FIL35 VERT. IN. CORNER REC LAMP brand. Made in extruded recycled aluminum with a rate of 80%, with opal polycarbonate diffuser. Model for LED MID-POWER, colour temperature 3000K with CRI80 and with electronic wiring Dali included. With IP20, IK07 protection rating. Insulation Class I. Photobiological safety group 0. LED lifetime: 60.000 L80 B10. Available finishes: White, black and grey. Environmental Product Declaration - EPD@available, according to UNE-EN ISO 9001:2015 and UNE-EN ISO 14001:2015.

**Finish:** Matte black RAL 9011

**Weight:** 1.540 g

**Installation:** Recessed
**TECHNICAL SPECIFICATIONS:**

<b>Light output:</b>	577 lm	<b>°K :</b>	3000
<b>Plum:</b>	6,1W	<b>CRI :</b>	80
<b>Efficacy:</b>	94,6 lm/w	<b>MacAdam:</b>	3
<b>Type:</b>	MID POWER LED	<b>Power Supply:</b>	220-240V 50/60Hz
<b>LED Lifetime:</b>	60.000 L80 B10 (Ta=25°C)	<b>Gear:</b>	Adjustable DALI
<b>Power:</b>	5W		

*Light output tolerance +/- 10%*
**CUSTOM MADE OPTIONS:**

**ACCESORIES :**

**Assembly**

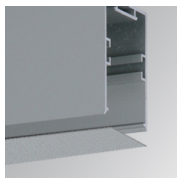


**Product code:**

F3COX/MMB

**Description:**

FIL 35 ACC. COVER X/MM BK.

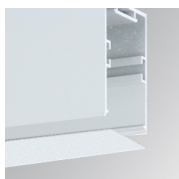


**Product code:**

F3COX/MMG

**Description:**

FIL 35 ACC. COVER X/MM GR.

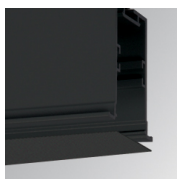


**Product code:**

F3COX/MMW

**Description:**

FIL 35 ACC. COVER X/MM WH.

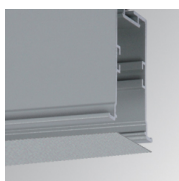


**Product code:**

F3PRREX/MMB

**Description:**

FIL 35 ACC. REC PROFIL X/MM BK.

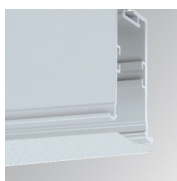


**Product code:**

F3PRREX/MMG

**Description:**

FIL 35 ACC. REC PROFIL X/MM GR.



**Product code:**

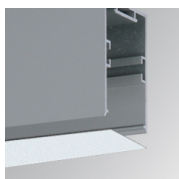
F3PRREX/MMW

**Description:**

FIL 35 ACC. REC PROFIL X/MM WH.

**ACCESORIES :**

**Optical**



**Product code:**

F3DIX/MMOP

**Description:**

FIL 35 ACC. OPAL DIFFUSER X/MM