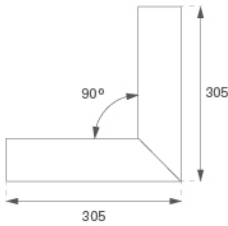


F31REVCELOOP840DW



FIL35 VERT EX CORNER REC 800 NW OP DA WH

Description:

Structure to recessed model FIL35 VERT. EX. CORNER REC LAMP brand. Made in extruded recycled aluminum with a rate of 80%, with opal polycarbonate diffuser. Model for LED MID-POWER, colour temperature 4000K with CRI80 and with electronic wiring Dali included. With IP20, IK07 protection rating. Insulation Class I. Photobiological safety group 0. LED lifetime: 60.000 L80 B10. Available finishes: White, black and grey. Environmental Product Declaration - EPD@available, according to UNE-EN ISO 9001:2015 and UNE-EN ISO 14001:2015.

Finish: Matte white RAL 9010

Weight: 1.580 g

Installation: Recessed

TECHNICAL SPECIFICATIONS:

Light output:	577 lm	°K :	4000
Plum:	6,1W	CRI :	80
Efficacy:	94,6 lm/w	MacAdam:	3
Type:	MID POWER LED	Power Supply:	220-240V 50/60Hz
LED Lifetime:	60.000 L80 B10 (Ta=25°C)	Gear:	Adjustable DALI
Power:	5W		

Light output tolerance +/- 10%



CUSTOM MADE OPTIONS:



ACCESORIES :

Assembly

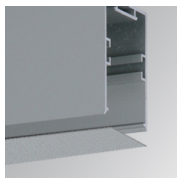


Product code:

F3COX/MMB

Description:

FIL 35 ACC. COVER X/MM BK.

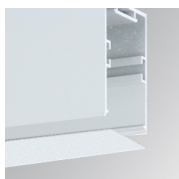


Product code:

F3COX/MMG

Description:

FIL 35 ACC. COVER X/MM GR.

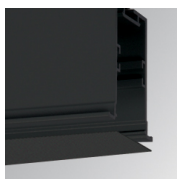


Product code:

F3COX/MMW

Description:

FIL 35 ACC. COVER X/MM WH.

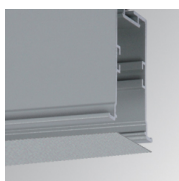


Product code:

F3PRREX/MMB

Description:

FIL 35 ACC. REC PROFIL X/MM BK.

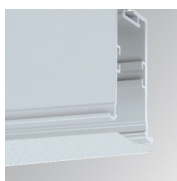


Product code:

F3PRREX/MMG

Description:

FIL 35 ACC. REC PROFIL X/MM GR.



Product code:

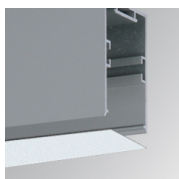
F3PRREX/MMW

Description:

FIL 35 ACC. REC PROFIL X/MM WH.

ACCESORIES :

Optical



Product code:

F3DIX/MMOP

Description:

FIL 35 ACC. OPAL DIFFUSER X/MM