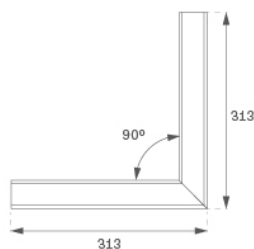
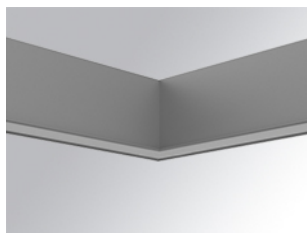


F31REHCL00C840DG



FIL35 HOR CORNER REC 800 NW OP DA COM GR

Description:

Structure to recessed model FIL35 HORIZ. CORNER REC LAMP brand. Made in extruded recycled aluminum with a rate of 80%, with an opal confort diffuser made of translucent polycarbonate diffuser and an optical film to achieve a controlled light distribution and low glare level, less tha UGR 19. Model for LED MID-POWER, colour temperature 4000K with CRI80 and with electronic wiring Dali included. With IP43, IK07 protection rating. Insulation Class I. Photobiological safety group 0. LED lifetime: 60.000 L80 B10. Available finishes: White, black and grey. Environmental Product Declaration - EPD@available, according to UNE-EN ISO 9001:2015 and UNE-EN ISO 14001:2015.

Finish: Gloss grey

Weight: 1.230 g

Installation: Recessed
TECHNICAL SPECIFICATIONS:

| | | | |
|----------------------|--------------------------|----------------------|------------------|
| Light output: | 534 lm | °K : | 4000 |
| Plum: | 6,1W | CRI : | 80 |
| Efficacy: | 87,5 lm/w | MacAdam: | 3 |
| UGR: | <19 | Power Supply: | 220-240V 50/60Hz |
| Type: | MID POWER LED | Gear: | Adjustable DALI |
| LED Lifetime: | 60.000 L80 B10 (Ta=25°C) | | |
| Power: | 5W | | |

Light output tolerance +/- 10%
**CUSTOM MADE OPTIONS:**

ACCESORIES :

Assembly



Product code:

F3COX/MMB

Description:

FIL 35 ACC. COVER X/MM BK.



Product code:

F3COX/MMG

Description:

FIL 35 ACC. COVER X/MM GR.



Product code:

F3COX/MMW

Description:

FIL 35 ACC. COVER X/MM WH.

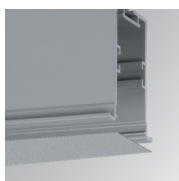


Product code:

F3PRREX/MMB

Description:

FIL 35 ACC. REC PROFIL X/MM BK.



Product code:

F3PRREX/MMG

Description:

FIL 35 ACC. REC PROFIL X/MM GR.



Product code:

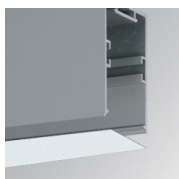
F3PRREX/MMW

Description:

FIL 35 ACC. REC PROFIL X/MM WH.

ACCESORIES :

Optical



Product code:

F3DIX/MMOP

Description:

FIL 35 ACC. OPAL DIFFUSER X/MM