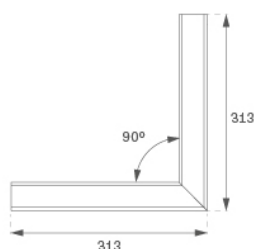
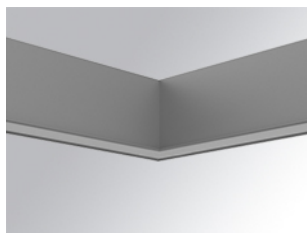


F31REHCL00C830DG



FIL35 HOR CORNER REC 800 WW OP DA COM GR

Description:

Structure to recessed model FIL35 HORIZ. CORNER REC LAMP brand. Made in extruded recycled aluminum with a rate of 80%, with an opal confort diffuser made of translucent polycarbonate diffuser and an optical film to achieve a controlled light distribution and low glare level, less tha UGR 19. Model for LED MID-POWER, colour temperature 3000K with CRI80 and with electronic wiring Dali included. With IP43, IK07 protection rating. Insulation Class I. Photobiological safety group 0. LED lifetime: 60.000 L80 B10. Available finishes: White, black and grey. Environmental Product Declaration - EPD@available, according to UNE-EN ISO 9001:2015 and UNE-EN ISO 14001:2015.

Finish: Gloss grey

Weight: 1.230 g

Installation: Recessed
TECHNICAL SPECIFICATIONS:

Light output:	577 lm	°K :	3000
Plum:	6,1W	CRI :	80
Efficacy:	94,6 lm/w	MacAdam:	3
UGR:	<19	Power Supply:	220-240V 50/60Hz
Type:	MID POWER LED	Gear:	Adjustable DALI
LED Lifetime:	60.000 L80 B10 (Ta=25°C)		
Power:	5W		

Light output tolerance +/- 10%
**CUSTOM MADE OPTIONS:**

ACCESORIES :

Assembly



Product code:

F3COX/MMB

Description:

FIL 35 ACC. COVER X/MM BK.



Product code:

F3COX/MMG

Description:

FIL 35 ACC. COVER X/MM GR.



Product code:

F3COX/MMW

Description:

FIL 35 ACC. COVER X/MM WH.

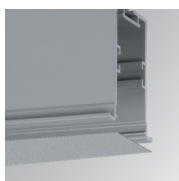


Product code:

F3PRREX/MMB

Description:

FIL 35 ACC. REC PROFIL X/MM BK.



Product code:

F3PRREX/MMG

Description:

FIL 35 ACC. REC PROFIL X/MM GR.



Product code:

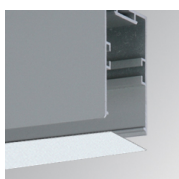
F3PRREX/MMW

Description:

FIL 35 ACC. REC PROFIL X/MM WH.

ACCESORIES :

Optical



Product code:

F3DIX/MMOP

Description:

FIL 35 ACC. OPAL DIFFUSER X/MM