

F31RE224LOOC840NW

**FIL35 REC 2240 3200 NW OP COMF WH.****Description:**

Structure to recessed model FIL35 REC 2240 3200 NW OPAL COMF WH., LAMP brand. Made of extruded aluminium painted in matt white with and opal comfort diffuser made of a translucent polycarbonate diffuser and an optical film to achieve a controlled light distribution and low glare level, less than UGR 19. Model for LED MID-POWER, neutral white color temperature and control gear included. With IP20, IK07 protection rating. Insulation class I. Photobiological safety group 0.

**Finish:** Matte white RAL 9010

**Dimensions:** 2.240 x 45 x 76 mm

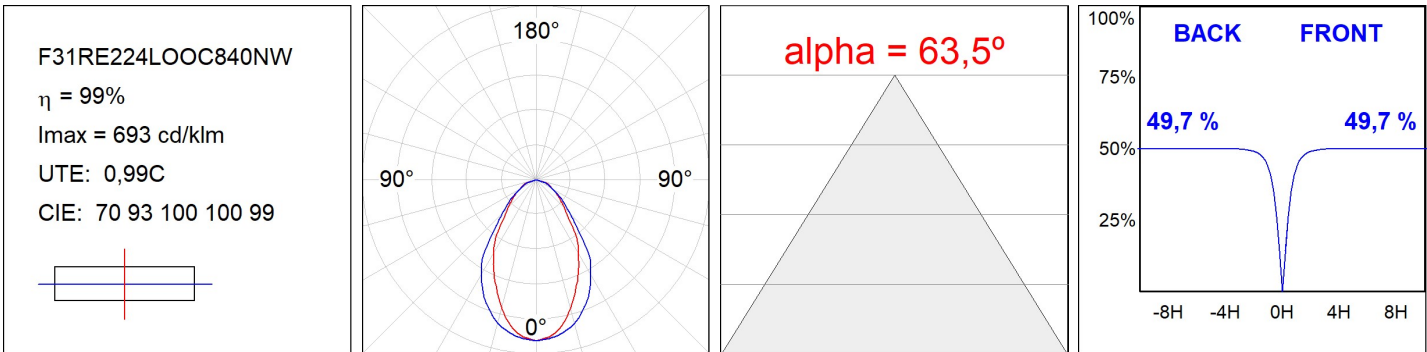
**Installation:** Recessed

**Recessing measures:** 2,248 x 42 x 0 mm
**TECHNICAL SPECIFICATIONS:**

<b>Light output:</b>	2.224 lm	<b>°K :</b>	4000
<b>Plum:</b>	21,7W	<b>CRI :</b>	80
<b>Efficacy:</b>	102,5 lm/w	<b>MacAdam:</b>	3
<b>UGR:</b>	19	<b>Power Supply:</b>	220-240V 50/60Hz
<b>Type:</b>	MID POWER TRIDONIC	<b>Gear:</b>	Electronic
<b>LED Lifetime:</b>	50.000 L90 B10 (Ta=25°C)		
<b>Power:</b>	22W		

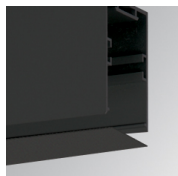
*Light output tolerance +/- 10%*
**CUSTOM MADE OPTIONS:**

PHOTOMETRIC DATA :



ACCESORIES :

Assembly

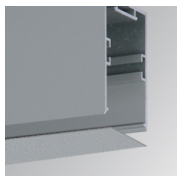


**Product code:**

F3COX/MMB

**Description:**

FIL 35 ACC. COVER X/MM BK.



**Product code:**

F3COX/MMG

**Description:**

FIL 35 ACC. COVER X/MM GR.

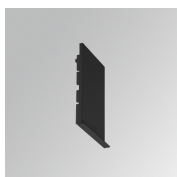


**Product code:**

F3COX/MMW

**Description:**

FIL 35 ACC. COVER X/MM WH.



**Product code:**

F3REECB

**Description:**

FIL 35 ACC. REC END COVER BK.



**Product code:**

F3REECG

**Description:**

FIL 35 ACC. REC END COVER GR.



**Product code:**

F3REECW

**Description:**

FIL 35 ACC. REC END COVER WH.