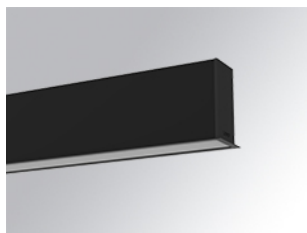


F31RE196LOOC840NB

**FIL35 REC 1960 2800 NW OP COMF BK.****Description:**

Structure to recessed model FIL35 REC 1960 2800 NW OPAL COMF BK., LAMP brand. Made of extruded aluminium painted in matt black with and opal comfort diffuser made of a translucent polycarbonate diffuser and an optical film to achieve a controlled light distribution and low glare level, less than UGR 19. Model for LED MID-POWER, neutral white color temperature and control gear included. With IP20, IK07 protection rating. Insulation class I. Photobiological safety group 0.

Finish: Matte black RAL 9011

Dimensions: 1.960 x 45 x 76 mm

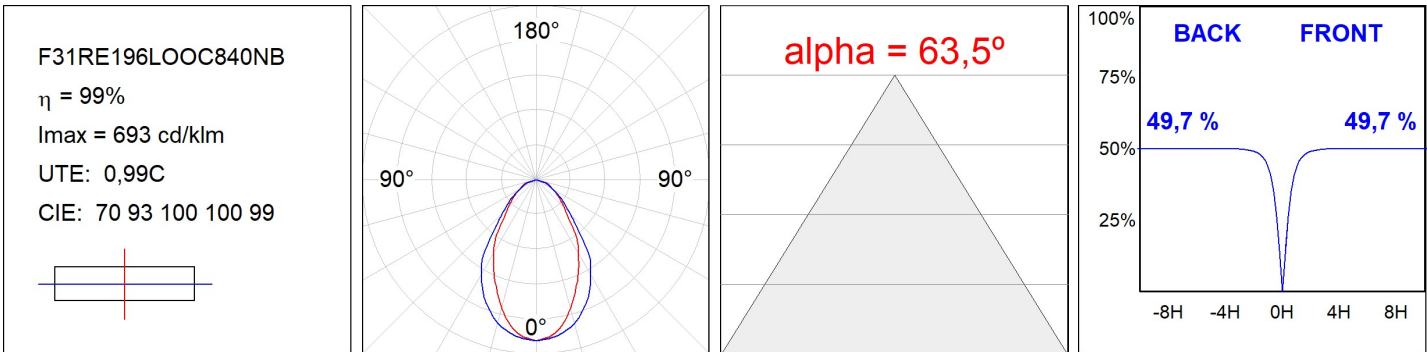
Installation: Recessed

Recessing measures: 1,968 x 42 x 0 mm
TECHNICAL SPECIFICATIONS:

Light output:	1.946 lm	°K :	4000
Plum:	18,9W	CRI :	80
Efficacy:	103 lm/w	MacAdam:	3
UGR:	19	Power Supply:	220-240V 50/60Hz
Type:	MID POWER TRIDONIC	Gear:	Electronic
LED Lifetime:	50.000 L90 B10 (Ta=25°C)		
Power:	19W		

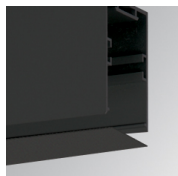
Light output tolerance +/- 10%
CUSTOM MADE OPTIONS:

PHOTOMETRIC DATA :



ACCESORIES :

Assembly

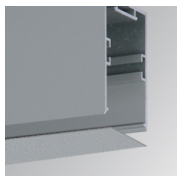


Product code:

F3COX/MMB

Description:

FIL 35 ACC. COVER X/MM BK.



Product code:

F3COX/MMG

Description:

FIL 35 ACC. COVER X/MM GR.

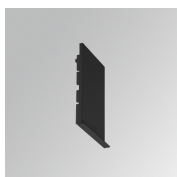


Product code:

F3COX/MMW

Description:

FIL 35 ACC. COVER X/MM WH.



Product code:

F3REECB

Description:

FIL 35 ACC. REC END COVER BK.



Product code:

F3REECG

Description:

FIL 35 ACC. REC END COVER GR.



Product code:

F3REECW

Description:

FIL 35 ACC. REC END COVER WH.