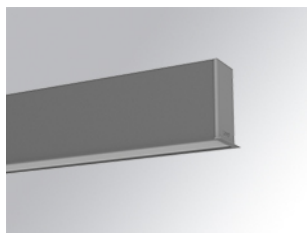


F31RE196LOOC830NG

**FIL35 REC 1960 2800 WW OP COMF GR.****Description:**

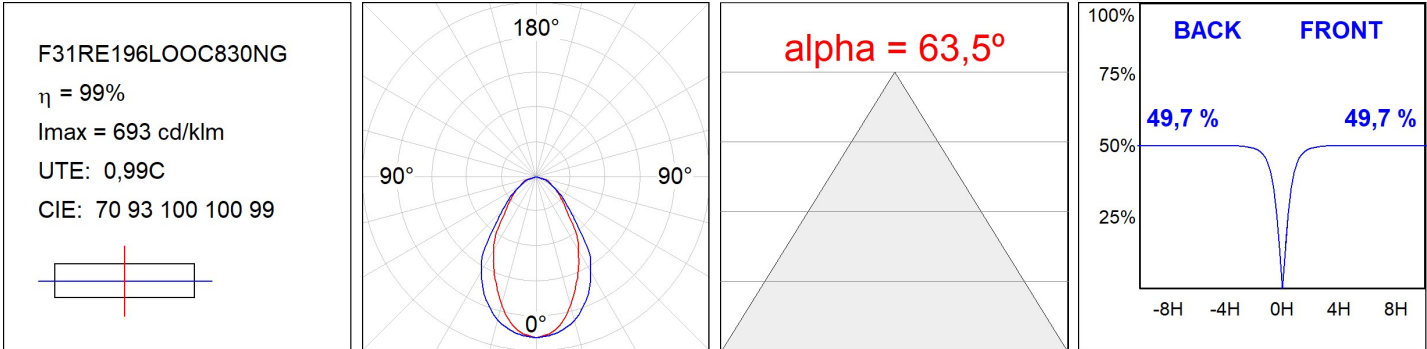
Structure to recessed model FIL35 REC 1960 2800 WW OPAL COMF GR., LAMP brand. Made of extruded aluminium painted in matt grey with an opal comfort diffuser made of a translucent polycarbonate diffuser and an optical film to achieve a controlled light distribution and low glare level, less than UGR 19. Model for LED MID-POWER, warm white color temperature and control gear included. With IP20, IK07 protection rating. Insulation class I. Photobiological safety group 0.

Finish: Gloss grey**Dimensions:** 1.960 x 45 x 76 mm**Installation:** Recessed**Recessing measures:** 1,968 x 42 x 0 mm**TECHNICAL SPECIFICATIONS:**

UGR:	19	°K :	3000
Type:	MID POWER TRIDONIC	CRI :	80
LED Lifetime:	50.000 L90 B10 (Ta=25°C)	MacAdam:	3
		Power Supply:	220-240V 50/60Hz
		Gear:	Electronic

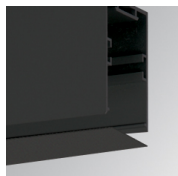
CUSTOM MADE OPTIONS:

PHOTOMETRIC DATA :



ACCESORIES :

Assembly

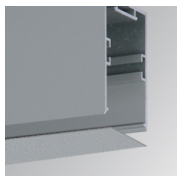


Product code:

F3COX/MMB

Description:

FIL 35 ACC. COVER X/MM BK.



Product code:

F3COX/MMG

Description:

FIL 35 ACC. COVER X/MM GR.

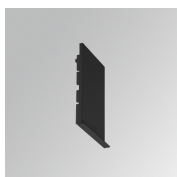


Product code:

F3COX/MMW

Description:

FIL 35 ACC. COVER X/MM WH.



Product code:

F3REECB

Description:

FIL 35 ACC. REC END COVER BK.



Product code:

F3REECG

Description:

FIL 35 ACC. REC END COVER GR.



Product code:

F3REECW

Description:

FIL 35 ACC. REC END COVER WH.