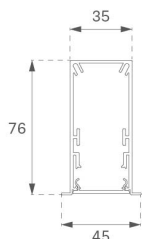
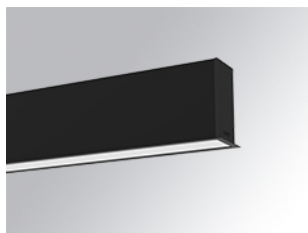


F31RE168MOOP830NB



**FIL35 REC 1680 4440 WW OPAL BK.**

**Description:**

Structure to recessed model FIL35 REC 1680 LAMP brand. Made in extruded recycled aluminum with a rate of 80%, with opal polycarbonate diffuser. Model for LED MID-POWER, colour temperature 3000K with CRI80 and with electronic wiring included. With IP20, IK07 protection rating. Insulation Class I. Photobiological safety group 0. LED lifetime: 50.000 L90 B10. Available finishes: White, black and grey. Environmental Product Declaration - EPD@available, according to UNE-EN ISO 9001:2015 and UNE-EN ISO 14001:2015.

**Finish:** Matte black RAL 9011

**Dimensions:** 1.680 x 45 x 76 mm

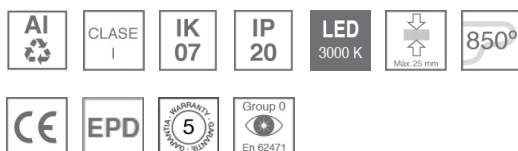
**Weight:** 4.000 g

**Installation:** Recessed

**TECHNICAL SPECIFICATIONS:**

<b>Light output:</b>	2.562 lm	<b>°K :</b>	3000
<b>Plum:</b>	25,2W	<b>CRI :</b>	80
<b>Efficacy:</b>	101,7 lm/w	<b>MacAdam:</b>	3
<b>Type:</b>	MID POWER LED	<b>Power Supply:</b>	220-240V 50/60Hz
<b>LED Lifetime:</b>	70.000 L80 B10 (Ta=25°C)	<b>Gear:</b>	Electronic
<b>Power:</b>	22W		

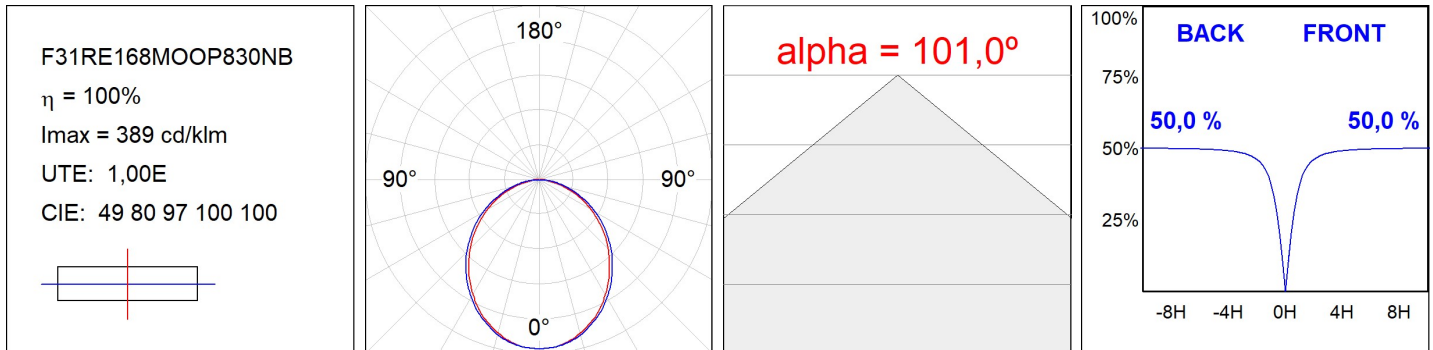
*Light output tolerance +/- 10%*



**CUSTOM MADE OPTIONS:**



PHOTOMETRIC DATA :



**ACCESSORIES :**

**Assembly**



**Product code:**  
F3COX/MMB

**Description:**  
FIL 35 ACC. COVER X/MM BK.



**Product code:**  
F3COX/MMG

**Description:**  
FIL 35 ACC. COVER X/MM GR.



**Product code:**  
F3COX/MMW

**Description:**  
FIL 35 ACC. COVER X/MM WH.



**Product code:**  
F3PRREX/MMB

**Description:**  
FIL 35 ACC. REC PROFIL X/MM BK.



**Product code:**  
F3PRREX/MMG

**Description:**  
FIL 35 ACC. REC PROFIL X/MM GR.



**Product code:**  
F3PRREX/MMW

**Description:**  
FIL 35 ACC. REC PROFIL X/MM WH.



**Product code:**  
F3REECB

**Description:**  
FIL 35 ACC. REC END COVER BK.



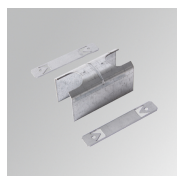
**Product code:**  
F3REECG

**Description:**  
FIL 35 ACC. REC END COVER GR.



**Product code:**  
F3REECW

**Description:**  
FIL 35 ACC. REC END COVER WH.



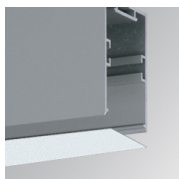
**Product code:**  
F3REJO

**Description:**  
FIL35 ACC. INTM JOINT B RECESSED

**ACCESSORIES :**

**Optical**

## FIL35



**Product code:**

F3DIX/MMOP

**Description:**

FIL 35 ACC. OPAL DIFFUSER X/MM