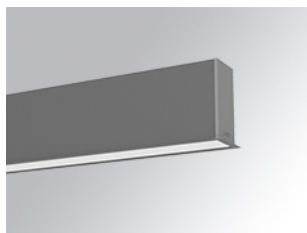


F31RE140LOOP840DG



FIL35 REC 1400 2000 NW OPAL DALI GR.

Description:

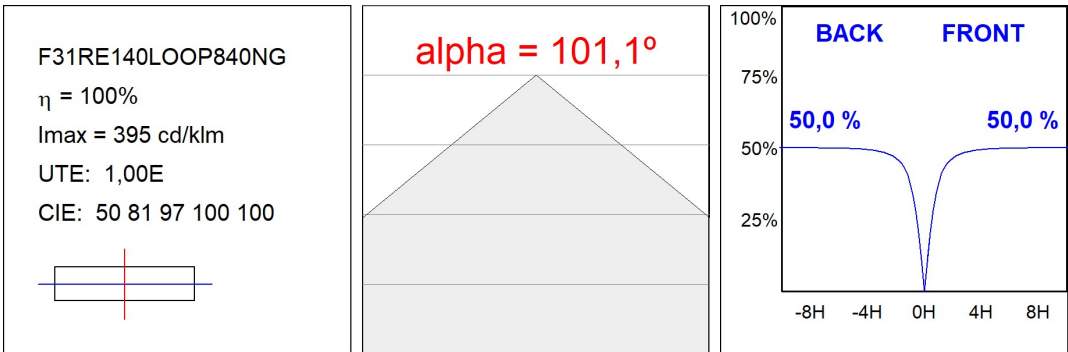
Structure to recessed model FIL35 REC 1400 LAMP brand. Made in extruded recycled aluminum with a rate of 80%, with opal polycarbonate diffuser. Model for LED MID-POWER, colour temperature 4000K with CRI80 and with electronic wiring Dali included. With IP43, IK07 protection rating. Insulation Class I. Photobiological safety group 0. LED lifetime: 50.000 L90 B10. Available finishes: White, black and grey. Environmental Product Declaration - EPD@available, according to UNE-EN ISO 9001:2015 and UNE-EN ISO 14001:2015.

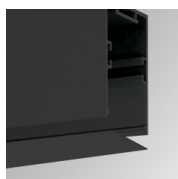
Finish: Gloss grey**Dimensions:** 1.400 x 45 x 76 mm**Weight:** 3.350 g**Installation:** Recessed**Recessing measures:** 1,408 x 42 x 0 mm**TECHNICAL SPECIFICATIONS:**

Light output:	1.520 lm	°K :	4000
Plum:	14,4W	CRI :	80
Efficacy:	105,6 lm/w	MacAdam:	3
Type:	MID POWER LED	Power Supply:	220-240V 50/60Hz
LED Lifetime:	50.000 L90 B10 (Ta=25°C)	Gear:	Adjustable DALI
Power:	14W		

Light output tolerance +/- 10%**CUSTOM MADE OPTIONS:**

PHOTOMETRIC DATA :

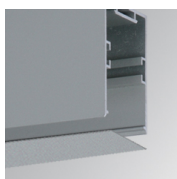


ACCESSORIES :
Assembly**Product code:**

F3COX/MMB

Description:

FIL 35 ACC. COVER X/MM BK.

**Product code:**

F3COX/MMG

Description:

FIL 35 ACC. COVER X/MM GR.

**Product code:**

F3COX/MMW

Description:

FIL 35 ACC. COVER X/MM WH.

**Product code:**

F3PRREX/MMB

Description:

FIL 35 ACC. REC PROFIL X/MM BK.

**Product code:**

F3PRREX/MMG

Description:

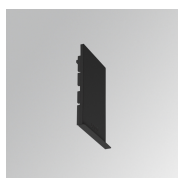
FIL 35 ACC. REC PROFIL X/MM GR.

**Product code:**

F3PRREX/MMW

Description:

FIL 35 ACC. REC PROFIL X/MM WH.

**Product code:**

F3REECB

Description:

FIL 35 ACC. REC END COVER BK.

**Product code:**

F3REECG

Description:

FIL 35 ACC. REC END COVER GR.

**Product code:**

F3REECW

Description:

FIL 35 ACC. REC END COVER WH.

**Product code:**

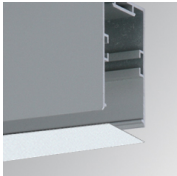
F3REJO

Description:

FIL35 ACC. INTM JOINT B RECESSED

ACCESSORIES :
Optical

FIL35



Product code:
F3DIX/MMOP

Description:
FIL 35 ACC. OPAL DIFFUSER X/MM