

F31RE112LOOP840DB



FIL35 REC 1120 1600 NW OPAL DALI BK.

Description:

Structure to recessed model FIL35 REC 1120 LAMP brand. Made in extruded recycled aluminum with a rate of 80%, with opal polycarbonate diffuser. Model for LED MID-POWER, colour temperature 4000K with CRI80 and with electronic wiring Dali included. With IP43, IK07 protection rating. Insulation Class I. Photobiological safety group 0. LED lifetime: 50.000 L90 B10. Available finishes: White, black and grey. Environmental Product Declaration - EPD@available, according to UNE-EN ISO 9001:2015 and UNE-EN ISO 14001:2015.

Finish: Matte black RAL 9011

Dimensions: 1.120 x 45 x 76 mm

Weight: 3.240 g

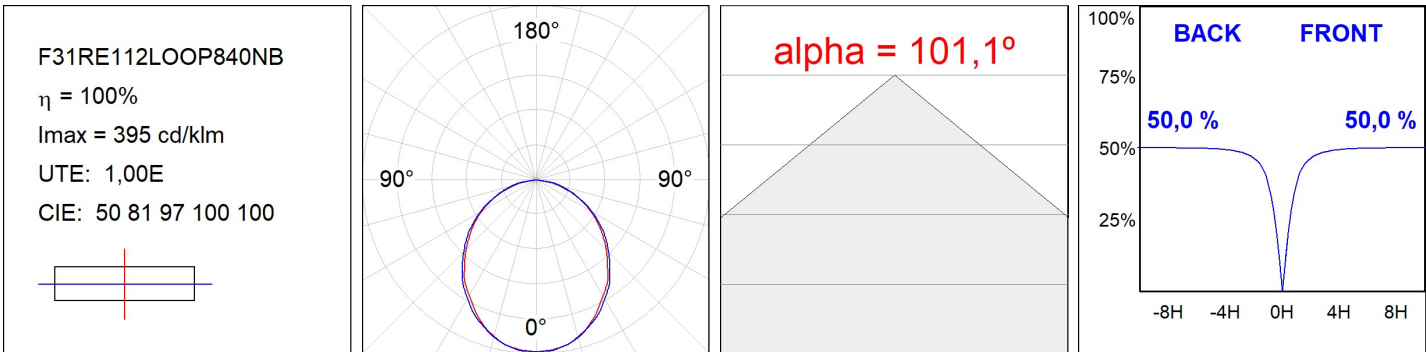
Installation: Recessed

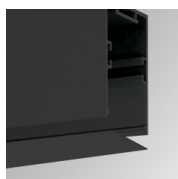
Recessing measures: 1,128 x 42 x 0 mm
TECHNICAL SPECIFICATIONS:

Light output:	1.216 lm	°K :	4000
Plum:	12,1W	CRI :	80
Efficacy:	100,5 lm/w	MacAdam:	3
Type:	MID POWER LED	Power Supply:	220-240V 50/60Hz
LED Lifetime:	50.000 L90 B10 (Ta=25°C)	Gear:	Adjustable DALI
Power:	11W		

Light output tolerance +/- 10%
**CUSTOM MADE OPTIONS:**

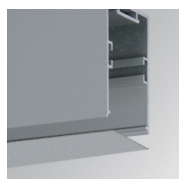
PHOTOMETRIC DATA :



ACCESSORIES :
Assembly

Product code:
F3COX/MMB

Description:
FIL 35 ACC. COVER X/MM BK.



Product code:
F3COX/MMG

Description:
FIL 35 ACC. COVER X/MM GR.



Product code:
F3COX/MMW

Description:
FIL 35 ACC. COVER X/MM WH.



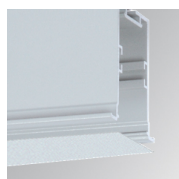
Product code:
F3PRREX/MMB

Description:
FIL 35 ACC. REC PROFIL X/MM BK.



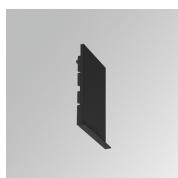
Product code:
F3PRREX/MMG

Description:
FIL 35 ACC. REC PROFIL X/MM GR.



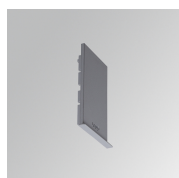
Product code:
F3PRREX/MMW

Description:
FIL 35 ACC. REC PROFIL X/MM WH.



Product code:
F3REECB

Description:
FIL 35 ACC. REC END COVER BK.



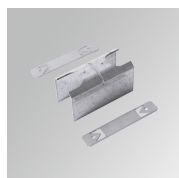
Product code:
F3REECG

Description:
FIL 35 ACC. REC END COVER GR.



Product code:
F3REECW

Description:
FIL 35 ACC. REC END COVER WH.



Product code:
F3REJO

Description:
FIL35 ACC. INTM JOINT B RECESSED

ACCESSORIES :
Optical

FIL35



Product code:

F3DIX/MMOP

Description:

FIL 35 ACC. OPAL DIFFUSER X/MM