

## F31RE084LOOP830NB



## FIL35 REC 840 1200 WW OPAL BK.

**Description:**

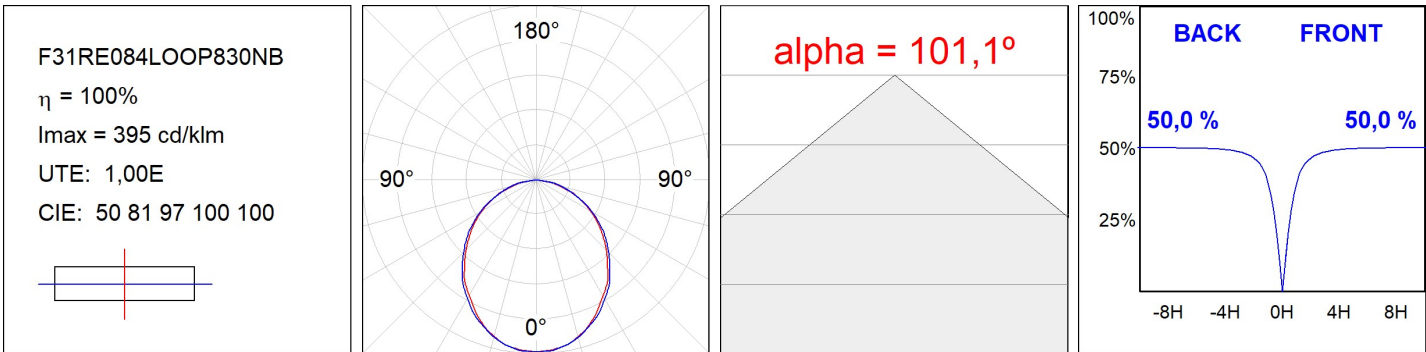
Structure to recessed model FIL35 REC 840 LAMP brand. Made in extruded recycled aluminum with a rate of 80%, with opal polycarbonate diffuser. Model for LED MID-POWER, colour temperature 3000K with CRI80 and with electronic wiring included. With IP43, IK07 protection rating. Insulation Class I. Photobiological safety group 0. LED lifetime: 50.000 L90 B10. Available finishes: White, black and grey. Environmental Product Declaration - EPD@available, according to UNE-EN ISO 9001:2015 and UNE-EN ISO 14001:2015.

**Finish:** Matte black RAL 9011**Dimensions:** 840 x 45 x 76 mm**Weight:** 2.000 g**Installation:** Recessed**Recessing measures:** 848 x 42 x 0 mm**TECHNICAL SPECIFICATIONS:**

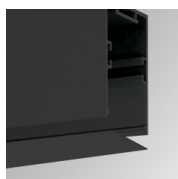
|                      |                          |                      |                  |
|----------------------|--------------------------|----------------------|------------------|
| <b>Light output:</b> | 866 lm                   | <b>°K :</b>          | 3000             |
| <b>Plum:</b>         | 8,8W                     | <b>CRI :</b>         | 80               |
| <b>Efficacy:</b>     | 98,5 lm/w                | <b>MacAdam:</b>      | 3                |
| <b>Type:</b>         | MID POWER LED            | <b>Power Supply:</b> | 220-240V 50/60Hz |
| <b>LED Lifetime:</b> | 50.000 L90 B10 (Ta=25°C) | <b>Gear:</b>         | Electronic       |
| <b>Power:</b>        | 8W                       |                      |                  |

**Light output tolerance +/- 10%****CUSTOM MADE OPTIONS:**

PHOTOMETRIC DATA :



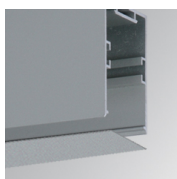
---

**ACCESSORIES :**
**Assembly****Product code:**

F3COX/MMB

**Description:**

FIL 35 ACC. COVER X/MM BK.

**Product code:**

F3COX/MMG

**Description:**

FIL 35 ACC. COVER X/MM GR.

**Product code:**

F3COX/MMW

**Description:**

FIL 35 ACC. COVER X/MM WH.

**Product code:**

F3PRREX/MMB

**Description:**

FIL 35 ACC. REC PROFIL X/MM BK.

**Product code:**

F3PRREX/MMG

**Description:**

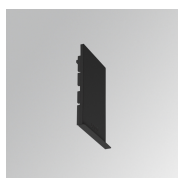
FIL 35 ACC. REC PROFIL X/MM GR.

**Product code:**

F3PRREX/MMW

**Description:**

FIL 35 ACC. REC PROFIL X/MM WH.

**Product code:**

F3REECB

**Description:**

FIL 35 ACC. REC END COVER BK.

**Product code:**

F3REECG

**Description:**

FIL 35 ACC. REC END COVER GR.

**Product code:**

F3REECW

**Description:**

FIL 35 ACC. REC END COVER WH.

**Product code:**

F3REJO

**Description:**

FIL35 ACC. INTM JOINT B RECESSED

---

**ACCESSORIES :**
**Optical**

## FIL35



**Product code:**

F3DIX/MMOP

**Description:**

FIL 35 ACC. OPAL DIFFUSER X/MM