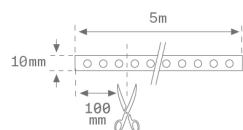


F1SF500LO658300

**FINE LED IP65 24V 7250LM 90W 830 5MX8****Description:**

Flexible strip model FINE LED IP65 24V 7250LM 90W 830 5MX8, LAMP brand. Model for MID-POWER LED, warm white color temperature. IP65 protection rating. Insulation class III. Supplied with a 5 meter coil and a 3M adhesive on the rear. These strips allow modular cut.

Weight: 148 g**Installation:** Surface**TECHNICAL SPECIFICATIONS:**

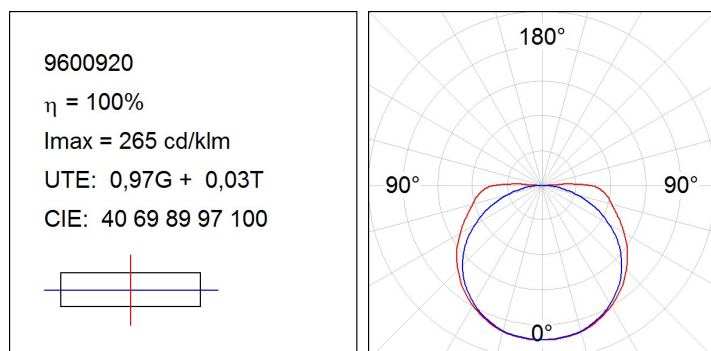
Light output:	6.625 lm	°K :	3000
		CRI :	80
Type:	MID POWER CITIZEN	MacAdam:	3
LED Lifetime:	50.000 L70		
Power:	93W	Gear:	Without gear (requires external gear)



F1SF500LO658300

FINE LED IP65 24V 7250LM 90W 830 5MX8

PHOTOMETRIC DATA :



ACCESORIES :
Assembly**Product code:**

FICOSU122000N

FISUEC120HG

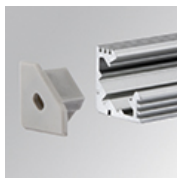
FISUEC121HG

Description:

FINE LED STRIP ACC. 12MM SUR PROFILE 2M

FINE LED STRIP ACC. 12MM SUR END COVER

FINE LED STRIP ACC. 12MM SUR HOLE COVER

**Product code:**

FICOSU452000N

FISUEC450HG

FISUEC451HG

Description:

FINE LED STRIP ACC. 45° PROFILE 2M

FINE LED STRIP ACC. 45° END COVER

FINE LED STRIP ACC. 45° HOLE COVER

**Product code:**

FIPRRE062000N

FIREEC060HG

FIREEC061HG

Description:

FINE LED STRIP ACC. 6MM REC PROFILE 2M

FINE LED STRIP ACC. 6MM REC END COVER

FINE LED STRIP ACC. 6MM REC HOLE COVER

**Product code:**

FIPRRE122000N

FIREEC120HG

FIREEC121HG

Description:

FINE LED STRIP ACC. 12MM REC PROFILE 2M

FINE LED STRIP ACC. 12MM REC END COVER

FINE LED STRIP ACC. 12MM REC HOLE COVER

**Product code:**

FIPRSU062000N

FISUEC060HG

FISUEC061HG

Description:

FINE LED STRIP ACC. 6MM SUR PROFILE 2M

FINE LED STRIP ACC. 6MM SUR END COVER

FINE LED STRIP ACC. 6MM SUR HOLE COVER

**Product code:**

FISUBR

FISUBR45

Description:

FINE LED STRIP ACC. SUR BRACKET

FINE LED STRIP ACC. 45° BRACKET

ACCESORIES :
Optical**Product code:**

FIDI2000OP

Description:

FINE LED STRIP ACC. OPAL DIFFUSER 2M

**Product code:**

FIDI2000TR

Description:

FINE LED STRIP ACC. TRANS DIFFUSER 2M

ACCESORIES :
Adjustment and control



Product code:

CL2012024A

CL2012024D

Description:

ACC. 1-10V PWM LED CONVERTER 24V 120W

ACC. DALI PWM LED CONVERTER 24V 120W



Product code:

CL2014424

Description:

ACC. DALI/DMX PWM RGB CONVERTER 24V 144W

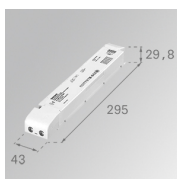


Product code:

CL2043224RGB

Description:

ACC. RGB RCONTROLLER 24V 432W



Product code:

DRV201002430N

Description:

ACC DRIVER 100W 24V 220-240V 30MM NR IND



Product code:

DRV2010024D

Description:

DRV 100W 24V 220-240V DA IND.



Product code:

DRV202024N

Description:

ACC. DRIVER 24V 20W



Product code:

DRV206024N

Description:

ACC. DRIVER 24V 60W



Product code:

DRV6710024N

Description:

DRV 100W 24V 100-305V NR IP67



Product code:

DRV688024N

Description:

ACC. DRIVER IP68 24V 80W

**Importante:**

- 1- En caso de cortes intermedios, para una conexión segura se recomienda soldar los cables a los terminales +/- de la tira flexible. Conectar la tira en la polaridad correcta.
- 2- En caso de cortes intermedios en los modelos IP65, se deben sellar las extremidades cortadas para garantizar el IP65.
- 3- La instalación debe ser sobre superficies lisas, limpias de polvo y grasa, y con grapas de sujeción. En otro tipo de superficie, se recomienda instalar la tira en perfilera de aluminio.
- 4- Cada tira de LED (bobina de 5m) debe ir alimentada con un driver. Para asegurar las prestaciones del producto, utilizar los drivers homologados por LAMP.
- 5- La garantía no cubre los daños creados por el incumplimiento de las recomendaciones.

Important:

- 1- In case of intermediate cuts, for a secure connection it is recommended to solder the wires to the +/- flexible strip terminals. Connect the strip with the correct polarity.
- 2- In case of intermediate cuts in IP65 models you must seal the cut ends to ensure the IP65.
- 3- The installation must be carried out on smooth, dust and fat-free surfaces using clamping plates. On other types of surface you are recommended to install the strip on aluminium profiles.
- 4- Each LED strip (5m coil) must be powered by a driver. To ensure product performance, use LAMP-approved drivers.
- 5- The warranty does not cover any damage caused owing to a breach of the recommendations.

Important:

- 1- En cas de découpes intermédiaires, pour une connexion sécurisée, il est recommandé de souder les câbles aux bornes +/- de la bandeau flexible. Connecter le bandeau sur la polarité appropriée.
- 2- En cas de découpes intermédiaires dans les modèles IP65 vous devrez protéger les extrémités coupées afin d'assurer l'IP65.
- 3- L'installation doit s'effectuer sur des surfaces lisses, exemptes de poussière et de graisse et au moyen d'agrafes de fixation. Sur tout autre type de surface, on recommande d'installer le bandeau sur un profilé en aluminium.
- 4- Chaque bandeau à LED (bobine de 5 m) doit être alimenté avec un driver. Pour garantir les prestations du produit, utiliser les drivers homologués par LAMP.
- 5- La garantie ne couvre pas les dommages dérivés du non respect des recommandations.