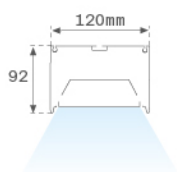


F121SF17HOOP840DW



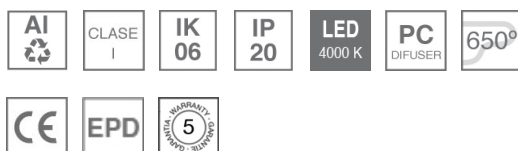
FIL120 SUR 1743 11400 NW OPAL DALI WH.

Description:

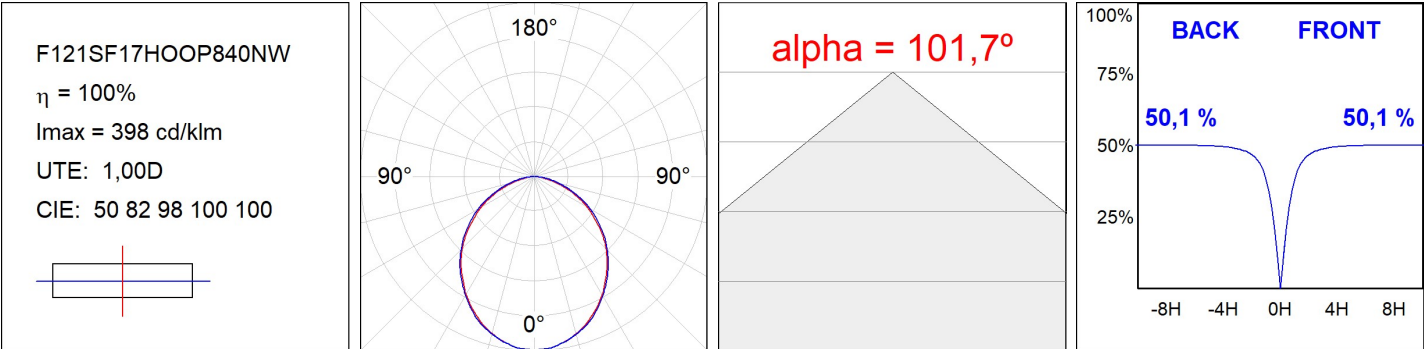
Suspended luminaire model FIL120 SUR 1743 LAMP brand. Made in extruded recycled aluminum with a rate of 80%, with opal polycarbonate diffuser. Model for LED MID-POWER, color temperature 4000K with CRI80 and control DALI gear included. With IP20, IK06 protection rating. Insulation class I. Photobiological safety group 0. LED life time: 96.000 L90 B10. Available finishes: White, black and grey. Environmental Product Declaration - EPD@available, according to UNE-EN ISO 9001:2015 and UNE-EN ISO 14001:2015.

Finish: Matte white RAL 9010**Dimensions:** 1.743 x 120 x 92 mm**Weight:** 6.790 g**Installation:** Surface**TECHNICAL SPECIFICATIONS:**

Light output:	8.156 lm	°K :	4000
Plum:	69,7W	CRI :	80
Efficacy:	117 lm/w	MacAdam:	3
UGR:	24	Power Supply:	220-240V 50/60Hz
Type:	MID POWER LED	Gear:	Adjustable DALI
LED Lifetime:	96.000 L90 B10 (Ta=25°C)		
Power:	65W		

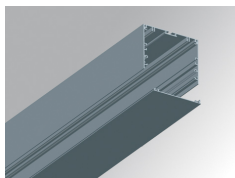
Light output tolerance +/- 10%**CUSTOM MADE OPTIONS:**

PHOTOMETRIC DATA :



ACCESORIES :

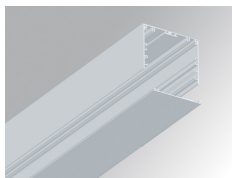
Assembly

**Product code:**

F12COX/MMG

Description:

FIL 120 ACC. COVER X/MM GR.

**Product code:**

F12COX/MMW

Description:

FIL 120 ACC. COVER X/MM WH.

**Product code:**

F12JOROEDG

Description:

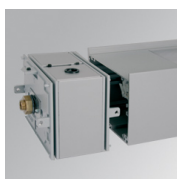
FIL 120 ACC. SUS REV END COVER GR.

**Product code:**

F12JOROEDW

Description:

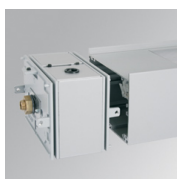
FIL 120 ACC. SUS REV END COVER WH.

**Product code:**

F12JOROIDG

Description:

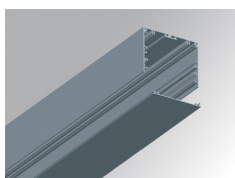
FIL 120 ACC. SUS REV INTM COVER GR.

**Product code:**

F12JOROIDW

Description:

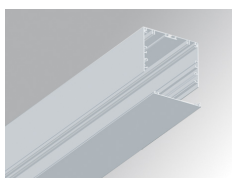
FIL 120 ACC. SUS REV INTM COVER WH.

**Product code:**

F12PRSUX/MMG

Description:

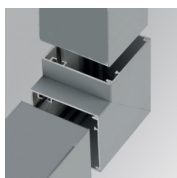
FIL 120 ACC. SUS PROFILE X/MM GR.

**Product code:**

F12PRSUX/MMW

Description:

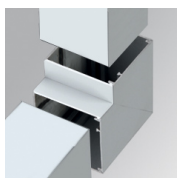
FIL 120 ACC. SUS PROFILE X/MM WH.

**Product code:**

F12SFVCG

Description:

FIL 120 ACC. 90° WALL CORNER GR.

**Product code:**

F12SFVCW

Description:

FIL 120 ACC. 90° WALL CORNER WH.

FIL 120

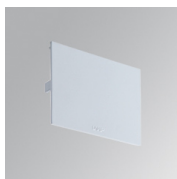


Product code:

F12SUECG

Description:

FIL 120 ACC. SUS END COVER GR.

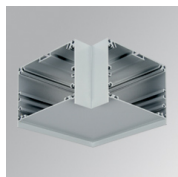


Product code:

F12SUECW

Description:

FIL 120 ACC. SUS END COVER WH.

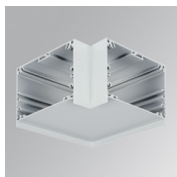


Product code:

F12SUHCG

Description:

FIL 120 ACC. SUS 90° CORNER GR.

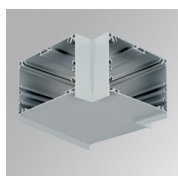


Product code:

F12SUHCW

Description:

FIL 120 ACC. SUS 90° CORNER WH.

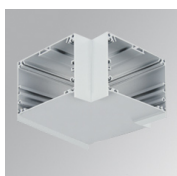


Product code:

F12SUTJG

Description:

FIL 120 ACC. T JOINT GR.

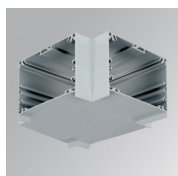


Product code:

F12SUTJW

Description:

FIL 120 ACC. T JOINT WH.



Product code:

F12SUXJG

Description:

FIL 120 ACC. X JOINT GR.



Product code:

F12SUXJW

Description:

FIL 120 ACC. X JOINT WH.



Product code:

F5JO

Description:

ACC. INTM JOINT B



Product code:

F7JO

Description:

ACC. INTM JOINT

ACCESORIES :

Suspension



Product code:
SUEM2W3000NG

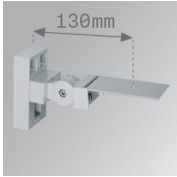
Description:
ACC. DB ELECMEC SUSP GR.



Product code:
SUEM2W3000NW

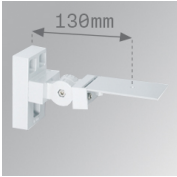
Description:
ACC. DB ELECMEC SUSP WH.

ACCESSORIES :
Support



Product code:
ARRO13G

Description:
ACC. ADJ WALL ARM GR.



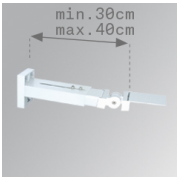
Product code:
ARRO13W

Description:
ACC. ADJ WALL ARM WH.



Product code:
ARROEX40G

Description:
ACC. ADJ EXTEN WALL ARM GR.



Product code:
ARROEX40W

Description:
ACC. ADJ EXTEN WALL ARM WH.



Product code:
F5FX300G
F5FX300W

Description:
ACC. WALL BRACKET 300MM GR.
ACC. WALL BRACKET 300MM WH.



Product code:
F5FX75G
F5FX75W

Description:
ACC. WALL BRACKET 75MM GR.
ACC. WALL BRACKET 75MM WH.

ACCESSORIES :
Optical



Product code:
F12DIX/MMOP

Description:
FIL 120 ACC. OPAL DIFFUSER X/MM