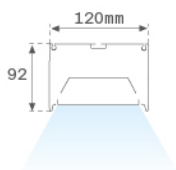


F121SF17HOOP830NW



FIL120 SUR 1743 11400 WW OPAL WH.

Description:

Suspended luminaire model FIL120 SUR 1743 LAMP brand. Made in extruded recycled aluminum with a rate of 80%, with opal polycarbonate diffuser. Model for LED MID-POWER, color temperature 3000K with CRI80 and control gear included. With IP20, IK06 protection rating. Insulation class I. Photobiological safety group 0. LED life time: 96.000 L90 B10. Available finishes: White, black and grey. Environmental Product Declaration - EPD@available, according to UNE-EN ISO 9001:2015 and UNE-EN ISO 14001:2015.

Finish: Matte white RAL 9010

Dimensions: 1.743 x 120 x 92 mm

Weight: 6.790 g

Installation: Surface

TECHNICAL SPECIFICATIONS:

Light output:	7.735 lm	°K :	3000
Plum:	71,7W	CRI :	80
Efficacy:	107,9 lm/w	MacAdam:	3
UGR:	24	Power Supply:	220-240V 50/60Hz
Type:	MID POWER LED	Gear:	Electronic
LED Lifetime:	96.000 L90 B10 (Ta=25°C)		
Power:	68W		

Light output tolerance +/- 10%

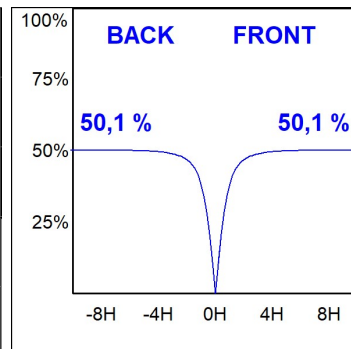
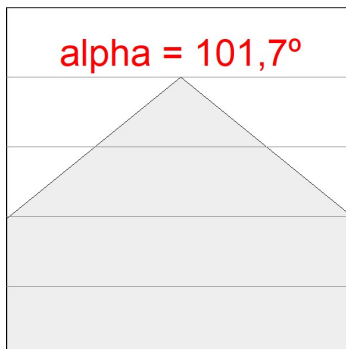
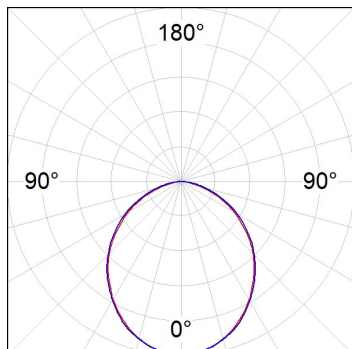



CUSTOM MADE OPTIONS:



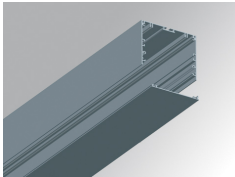
PHOTOMETRIC DATA :

F121SF17HOOP830NW
 $\eta = 100\%$
 $I_{max} = 398 \text{ cd/klm}$
UTE: 1,00D
CIE: 50 82 98 100 100



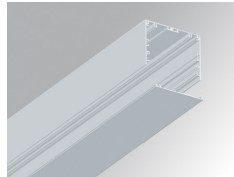
ACCESORIES :

Assembly



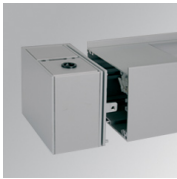
Product code:
F12COX/MMG

Description:
FIL 120 ACC. COVER X/MM GR.



Product code:
F12COX/MMW

Description:
FIL 120 ACC. COVER X/MM WH.



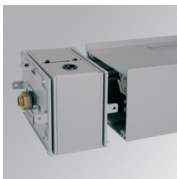
Product code:
F12JOROEDG

Description:
FIL 120 ACC. SUS REV END COVER GR.



Product code:
F12JOROEDW

Description:
FIL 120 ACC. SUS REV END COVER WH.



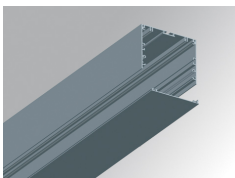
Product code:
F12JOROIDG

Description:
FIL 120 ACC. SUS REV INTM COVER GR.



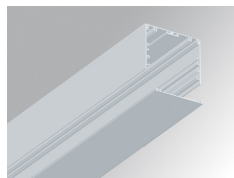
Product code:
F12JOROIDW

Description:
FIL 120 ACC. SUS REV INTM COVER WH.



Product code:
F12PRSUX/MMG

Description:
FIL 120 ACC. SUS PROFILE X/MM GR.



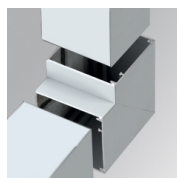
Product code:
F12PRSUX/MMW

Description:
FIL 120 ACC. SUS PROFILE X/MM WH.



Product code:
F12SFVCG

Description:
FIL 120 ACC. 90° WALL CORNER GR.



Product code:
F12SFVCW

Description:
FIL 120 ACC. 90° WALL CORNER WH.



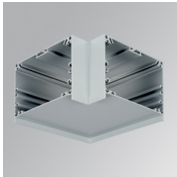
Product code:
F12SUECG

Description:
FIL 120 ACC. SUS END COVER GR.



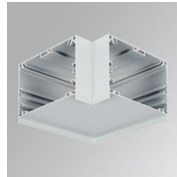
Product code:
F12SUECW

Description:
FIL 120 ACC. SUS END COVER WH.



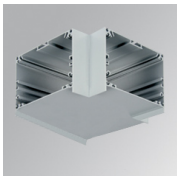
Product code:
F12SUHCG

Description:
FIL 120 ACC. SUS 90° CORNER GR.



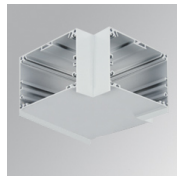
Product code:
F12SUHCW

Description:
FIL 120 ACC. SUS 90° CORNER WH.



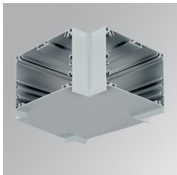
Product code:
F12SUTJG

Description:
FIL 120 ACC. T JOINT GR.



Product code:
F12SUTJW

Description:
FIL 120 ACC. T JOINT WH.



Product code:
F12SUXJG

Description:
FIL 120 ACC. X JOINT GR.



Product code:
F12SUXJW

Description:
FIL 120 ACC. X JOINT WH.



Product code:
F5JO

Description:
ACC. INTM JOINT B



Product code:
F7JO

Description:
ACC. INTM JOINT

ACCESORIES :

Suspension



Product code:
SUEM2W3000NG

Description:
ACC. DB ELECMEC SUSP GR.

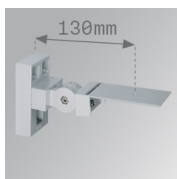


Product code:
SUEM2W3000NW

Description:
ACC. DB ELECMEC SUSP WH.

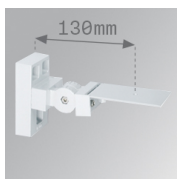
ACCESSORIES :

Support



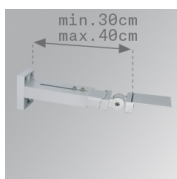
Product code:
ARRO13G

Description:
ACC. ADJ WALL ARM GR.



Product code:
ARRO13W

Description:
ACC. ADJ WALL ARM WH.



Product code:
ARROEX40G

Description:
ACC. ADJ EXTEN WALL ARM GR.



Product code:
ARROEX40W

Description:
ACC. ADJ EXTEN WALL ARM WH.



Product code:
F5FX300G
F5FX300W

Description:
ACC. WALL BRACKET 300MM GR.
ACC. WALL BRACKET 300MM WH.

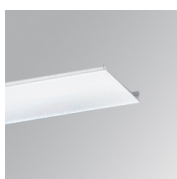


Product code:
F5FX75G
F5FX75W

Description:
ACC. WALL BRACKET 75MM GR.
ACC. WALL BRACKET 75MM WH.

ACCESSORIES :

Optical



Product code:
F12DIX/MMOP

Description:
FIL 120 ACC. OPAL DIFFUSER X/MM