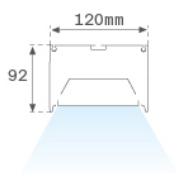


F121SF17HOOP830NG



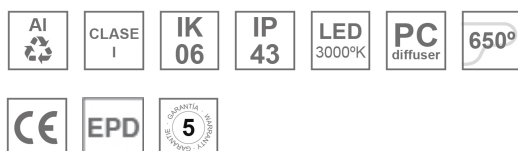
FIL120 SUR 1743 11400 WW OPAL GR.

Description:

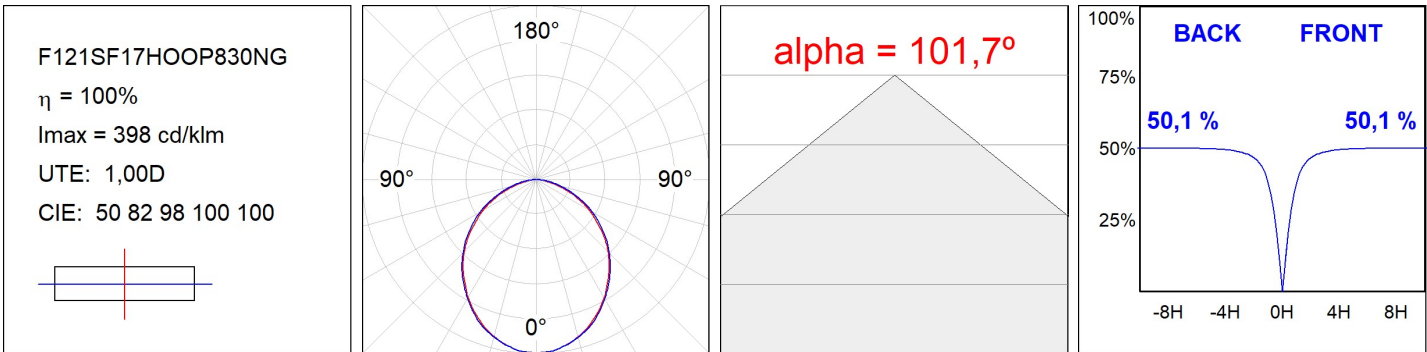
Suspended luminaire model FIL120 SUR 1743 LAMP brand. Made in extruded recycled aluminum with a rate of 80%, with opal polycarbonate diffuser. Model for LED MID-POWER, color temperature 3000K with CRI80 and control gear included. With IP43, except for suspended installation, which becomes IP20, IK06 protection rating. Insulation class I. Photobiological safety group 0. LED life time: 96.000 L90 B10. Available finishes: White, black and grey. Environmental Product Declaration - EPD@available, according to UNE-EN ISO 9001:2015 and UNE-EN ISO 14001:2015.

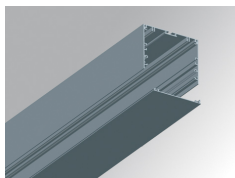
Finish: Gloss grey**Dimensions:** 1.743 x 120 x 92 mm**Weight:** 6.790 g**Installation:** Surface**TECHNICAL SPECIFICATIONS:**

Light output:	7.735 lm	°K :	3000
Plum:	71,7W	CRI :	80
Efficacy:	107,9 lm/w	MacAdam:	3
UGR:	24	Power Supply:	220-240V 50/60Hz
Type:	MID POWER LED	Gear:	Electronic
LED Lifetime:	96.000 L90 B10 (Ta=25°C)		
Power:	68W		

Light output tolerance +/- 10%**CUSTOM MADE OPTIONS:**

PHOTOMETRIC DATA :

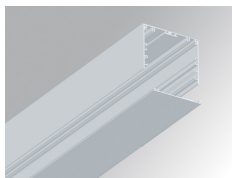


ACCESORIES :
Assembly

Product code:

F12COX/MMG

Description:

FIL 120 ACC. COVER X/MM GR.


Product code:

F12COX/MMW

Description:

FIL 120 ACC. COVER X/MM WH.


Product code:

F12JOROEDG

Description:

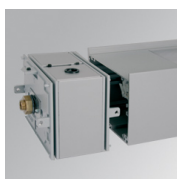
FIL 120 ACC. SUS REV END COVER GR.


Product code:

F12JOROEDW

Description:

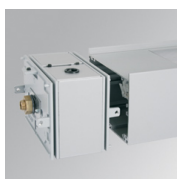
FIL 120 ACC. SUS REV END COVER WH.


Product code:

F12JOROIDG

Description:

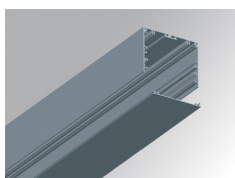
FIL 120 ACC. SUS REV INTM COVER GR.


Product code:

F12JOROIDW

Description:

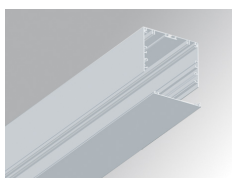
FIL 120 ACC. SUS REV INTM COVER WH.


Product code:

F12PRSUX/MMG

Description:

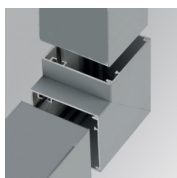
FIL 120 ACC. SUS PROFILE X/MM GR.


Product code:

F12PRSUX/MMW

Description:

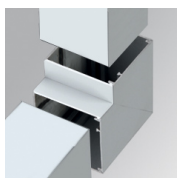
FIL 120 ACC. SUS PROFILE X/MM WH.


Product code:

F12SFVCG

Description:

FIL 120 ACC. 90° WALL CORNER GR.


Product code:

F12SFVCW

Description:

FIL 120 ACC. 90° WALL CORNER WH.

FIL 120

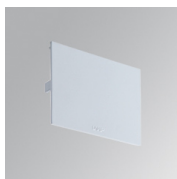


Product code:

F12SUECG

Description:

FIL 120 ACC. SUS END COVER GR.

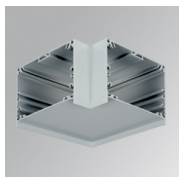


Product code:

F12SUECW

Description:

FIL 120 ACC. SUS END COVER WH.

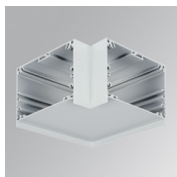


Product code:

F12SUHCG

Description:

FIL 120 ACC. SUS 90° CORNER GR.

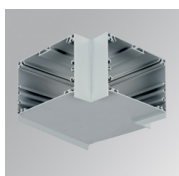


Product code:

F12SUHCW

Description:

FIL 120 ACC. SUS 90° CORNER WH.

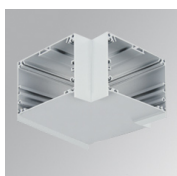


Product code:

F12SUTJG

Description:

FIL 120 ACC. T JOINT GR.

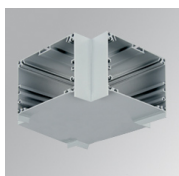


Product code:

F12SUTJW

Description:

FIL 120 ACC. T JOINT WH.



Product code:

F12SUXJG

Description:

FIL 120 ACC. X JOINT GR.



Product code:

F12SUXJW

Description:

FIL 120 ACC. X JOINT WH.



Product code:

F7JO

Description:

ACC. INTM JOINT

ACCESORIES :

Suspension



Product code:

SUEM2W3000NG

Description:

ACC. DB ELECMEC SUSP GR.



Product code:

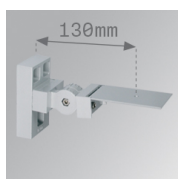
SUEM2W3000NW

Description:

ACC. DB ELECMEC SUSP WH.

ACCESSORIES :

Support

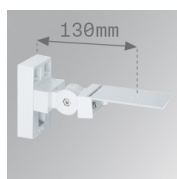


Product code:

ARRO13G

Description:

ACC. ADJ WALL ARM GR.

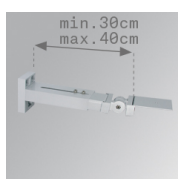


Product code:

ARRO13W

Description:

ACC. ADJ WALL ARM WH.



Product code:

ARROEX40G

Description:

ACC. ADJ EXTEN WALL ARM GR.



Product code:

ARROEX40W

Description:

ACC. ADJ EXTEN WALL ARM WH.



Product code:

F5FX75G

F5FX75W

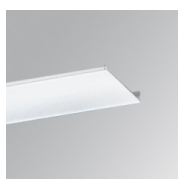
Description:

ACC. WALL BRACKET 75MM GR.

ACC. WALL BRACKET 75MM WH.

ACCESSORIES :

Optical



Product code:

F12DIX/MMOP

Description:

FIL 120 ACC. OPAL DIFFUSER X/MM