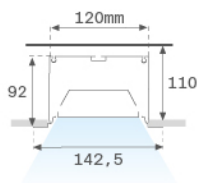


F121RE17HOOP840NG



FIL120 REC 1743 11400 NW OPAL GR.

Description:

Recessed luminaire model FIL120 REC 1743 LAMP brand. Made in extruded recycled aluminum with a rate of 80%, with opal polycarbonate diffuser. Model for LED MID-POWER, color temperature 4000K with CRI80 and control gear included. With IP20, IK06 protection rating. Insulation class I. Photobiological safety group 0. LED life time: 96.000 L90 B10. Available finishes: White, black and grey. Environmental Product Declaration - EPD@available, according to UNE-EN ISO 9001:2015 and UNE-EN ISO 14001:2015.

Finish: Gloss grey

Dimensions: 1.743 x 142,5 x 92 mm

Weight: 6.790 g

Installation: Recessed

Recessing measures: 1,755 x 130 x 0 mm

TECHNICAL SPECIFICATIONS:

Light output:	8.156 lm	°K :	4000
Plum:	69,7W	CRI :	80
Efficacy:	117 lm/w	MacAdam:	3
UGR:	24	Power Supply:	220-240V 50/60Hz
Type:	MID POWER LED	Gear:	Electronic
LED Lifetime:	96.000 L90 B10 (Ta=25°C)		
Power:	65W		

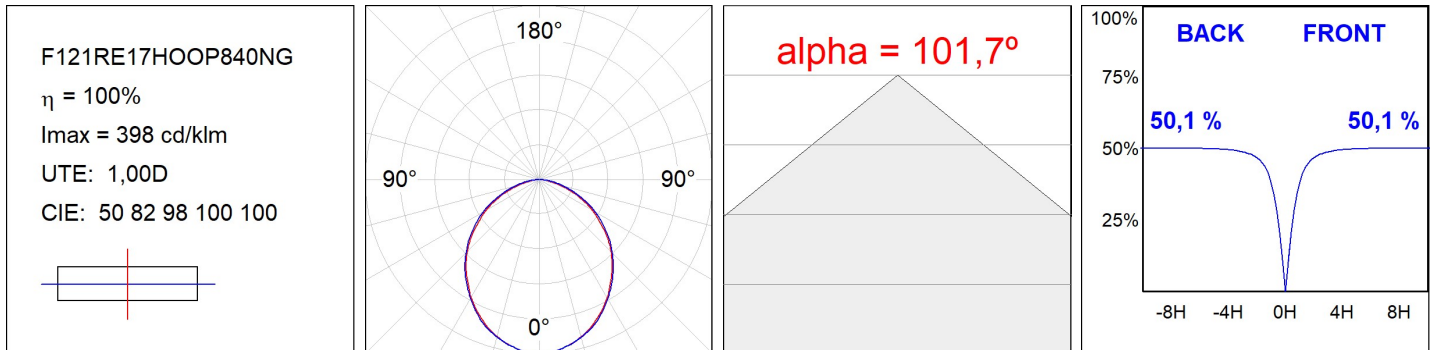
Light output tolerance +/- 10%



CUSTOM MADE OPTIONS:

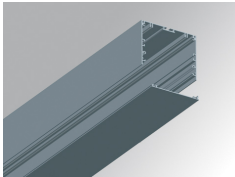


PHOTOMETRIC DATA :



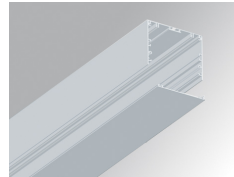
ACCESORIES :

Assembly



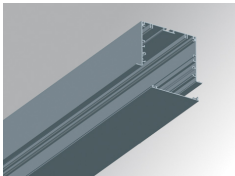
Product code:
F12COX/MMG

Description:
FIL 120 ACC. COVER X/MM GR.



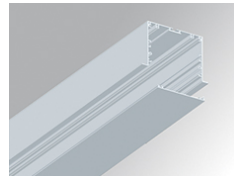
Product code:
F12COX/MMW

Description:
FIL 120 ACC. COVER X/MM WH.



Product code:
F12PREX/MMG

Description:
FIL 120 ACC. REC PROFILE X/MM GR.



Product code:
F12PREX/MMW

Description:
FIL 120 ACC. REC PROFILE X/MM WH.



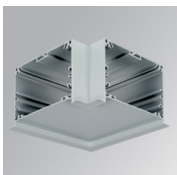
Product code:
F12REECG

Description:
FIL 120 ACC. REC END COVER GR.



Product code:
F12REECW

Description:
FIL 120 ACC. REC END COVER WH.



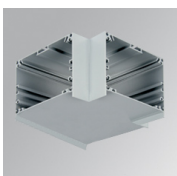
Product code:
F12REHCG

Description:
FIL 120 ACC. REC 90° CORNER GR.



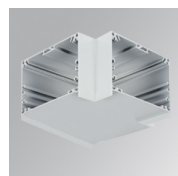
Product code:
F12REHCW

Description:
FIL 120 ACC. REC 90° CORNER WH.



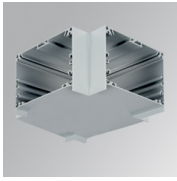
Product code:
F12SUTJG

Description:
FIL 120 ACC. T JOINT GR.



Product code:
F12SUTJW

Description:
FIL 120 ACC. T JOINT WH.



Product code:
F12SUXJG

Description:
FIL 120 ACC. X JOINT GR.



Product code:
F12SUXJW

Description:
FIL 120 ACC. X JOINT WH.



Product code:
F5JO

Description:
ACC. INTM JOINT B

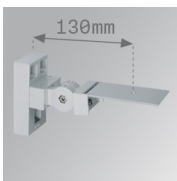


Product code:
F7JO

Description:
ACC. INTM JOINT

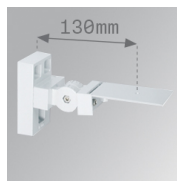
ACCESSORIES :

Support



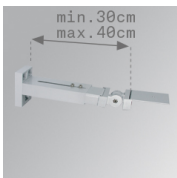
Product code:
ARRO13G

Description:
ACC. ADJ WALL ARM GR.



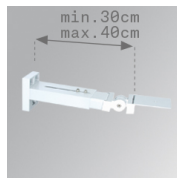
Product code:
ARRO13W

Description:
ACC. ADJ WALL ARM WH.



Product code:
ARROEX40G

Description:
ACC. ADJ EXTEN WALL ARM GR.



Product code:
ARROEX40W

Description:
ACC. ADJ EXTEN WALL ARM WH.



Product code:
F5FX300G
F5FX300W

Description:
ACC. WALL BRACKET 300MM GR.
ACC. WALL BRACKET 300MM WH.



Product code:
F5FX75G
F5FX75W

Description:
ACC. WALL BRACKET 75MM GR.
ACC. WALL BRACKET 75MM WH.

ACCESSORIES :

Optical

FIL 120



Product code:

F12DIX/MMOP

Description:

FIL 120 ACC. OPAL DIFFUSER X/MM