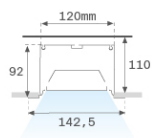


## F121RE17HOOP840DG



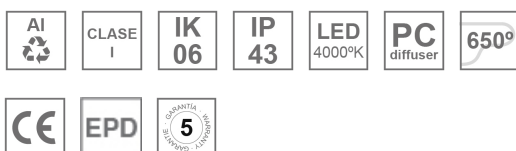
## FIL120 REC 1743 11400 NW OPAL DALI GR.

**Description:**

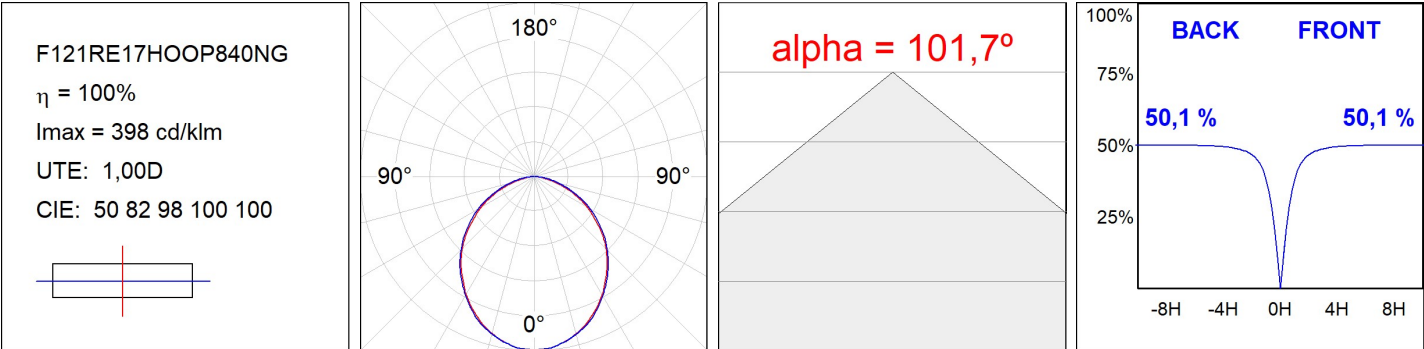
Recessed luminaire model FIL120 REC 1743 LAMP brand. Made in extruded recycled aluminum with a rate of 80%, with opal polycarbonate diffuser. Model for LED MID-POWER, color temperature 4000K with CRI80 and control DALI gear included. With IP43, IK06 protection rating. Insulation class I. Photobiological safety group 0. LED life time: 96.000 L90 B10. Available finishes: White, black and grey. Environmental Product Declaration - EPD@available, according to UNE-EN ISO 9001:2015 and UNE-EN ISO 14001:2015.

**Finish:** Gloss grey**Dimensions:** 1.743 x 142,5 x 92 mm**Weight:** 6.790 g**Installation:** Recessed**Recessing measures:** 1,755 x 130 x 0 mm**TECHNICAL SPECIFICATIONS:**

<b>Light output:</b>	8.156 lm	<b>°K :</b>	4000
<b>Plum:</b>	69,7W	<b>CRI :</b>	80
<b>Efficacy:</b>	117 lm/w	<b>MacAdam:</b>	3
<b>UGR:</b>	24	<b>Power Supply:</b>	220-240V 50/60Hz
<b>Type:</b>	MID POWER LED	<b>Gear:</b>	Adjustable DALI
<b>LED Lifetime:</b>	96.000 L90 B10 (Ta=25°C)		
<b>Power:</b>	65W		

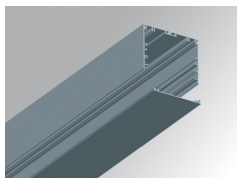
**Light output tolerance +/- 10%****CUSTOM MADE OPTIONS:**

PHOTOMETRIC DATA :



## ACCESSORIES :

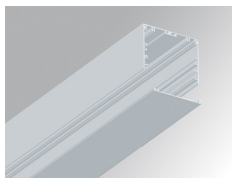
## Assembly

**Product code:**

F12COX/MMG

**Description:**

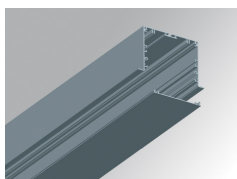
FIL 120 ACC. COVER X/MM GR.

**Product code:**

F12COX/MMW

**Description:**

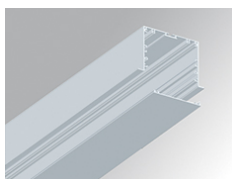
FIL 120 ACC. COVER X/MM WH.

**Product code:**

F12PRRX/MMG

**Description:**

FIL 120 ACC. REC PROFILE X/MM GR.

**Product code:**

F12PRRX/MMW

**Description:**

FIL 120 ACC. REC PROFILE X/MM WH.

**Product code:**

F12REECG

**Description:**

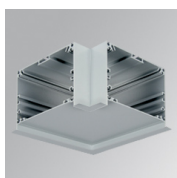
FIL 120 ACC. REC END COVER GR.

**Product code:**

F12REECW

**Description:**

FIL 120 ACC. REC END COVER WH.

**Product code:**

F12REHCG

**Description:**

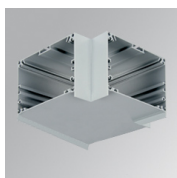
FIL 120 ACC. REC 90° CORNER GR.

**Product code:**

F12REHCW

**Description:**

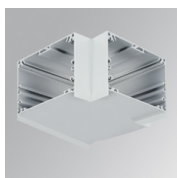
FIL 120 ACC. REC 90° CORNER WH.

**Product code:**

F12SUTJG

**Description:**

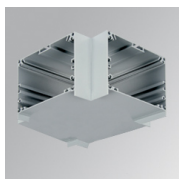
FIL 120 ACC. T JOINT GR.

**Product code:**

F12SUTJW

**Description:**

FIL 120 ACC. T JOINT WH.

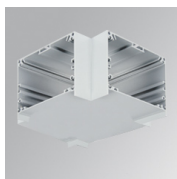


**Product code:**

F12SUXJG

**Description:**

FIL 120 ACC. X JOINT GR.



**Product code:**

F12SUXJW

**Description:**

FIL 120 ACC. X JOINT WH.



**Product code:**

F5JO

**Description:**

ACC. INTM JOINT B



**Product code:**

F7JO

**Description:**

ACC. INTM JOINT

## ACCESORIES :

### Support

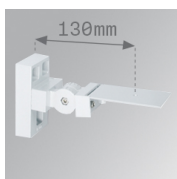


**Product code:**

ARRO13G

**Description:**

ACC. ADJ WALL ARM GR.

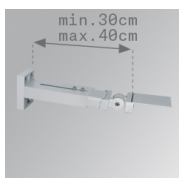


**Product code:**

ARRO13W

**Description:**

ACC. ADJ WALL ARM WH.

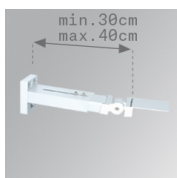


**Product code:**

ARROEX40G

**Description:**

ACC. ADJ EXTEN WALL ARM GR.



**Product code:**

ARROEX40W

**Description:**

ACC. ADJ EXTEN WALL ARM WH.



**Product code:**

F5FX75G

**Description:**

ACC. WALL BRACKET 75MM GR.

F5FX75W

ACC. WALL BRACKET 75MM WH.

## ACCESORIES :

### Optical

## FIL 120



**Product code:**

F12DIX/MMOP

**Description:**

FIL 120 ACC. OPAL DIFFUSER X/MM