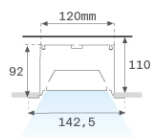


F121RE12HOOP840DG



FIL120 REC 1162 7600 NW OPAL DALI GR.

Description:

Recessed luminaire model FIL120 REC 1162 LAMP brand. Made in extruded recycled aluminum with a rate of 80%, with opal polycarbonate diffuser. Model for LED MID-POWER, color temperature 4000K with CRI80 and control DALI gear included. With IP43, IK06 protection rating. Insulation class I. Photobiological safety group 0. LED life time: 96.000 L90 B10. Available finishes: White, black and grey. Environmental Product Declaration - EPD@available, according to UNE-EN ISO 9001:2015 and UNE-EN ISO 14001:2015.

Finish: Gloss grey

Dimensions: 1.162 x 142,5 x 92 mm

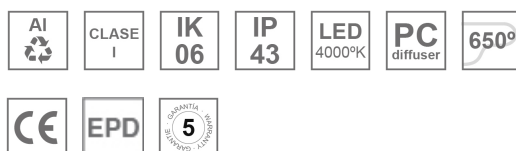
Weight: 4.190 g

Installation: Recessed

Recessing measures: 1,174 x 130 x 0 mm

TECHNICAL SPECIFICATIONS:

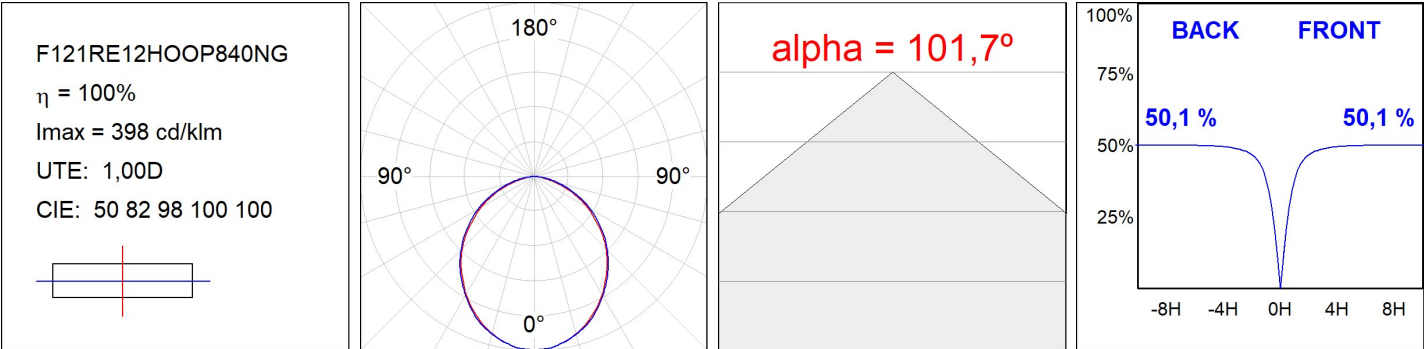
Light output:	5.437 lm	°K :	4000
Plum:	47,8W	CRI :	80
Efficacy:	113,7 lm/w	MacAdam:	3
UGR:	24	Power Supply:	220-240V 50/60Hz
Type:	MID POWER LED	Gear:	Adjustable DALI
LED Lifetime:	96.000 L90 B10 (Ta=25°C)		
Power:	44W		

Light output tolerance +/- 10%


CUSTOM MADE OPTIONS:

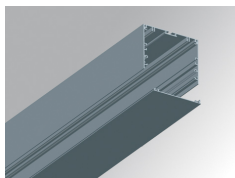


PHOTOMETRIC DATA :



ACCESSORIES :

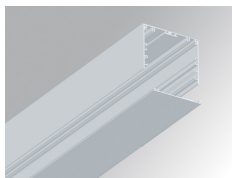
Assembly

**Product code:**

F12COX/MMG

Description:

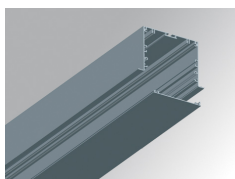
FIL 120 ACC. COVER X/MM GR.

**Product code:**

F12COX/MMW

Description:

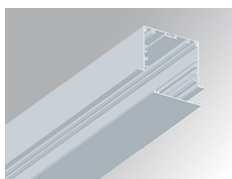
FIL 120 ACC. COVER X/MM WH.

**Product code:**

F12PRRX/MMG

Description:

FIL 120 ACC. REC PROFILE X/MM GR.

**Product code:**

F12PRRX/MMW

Description:

FIL 120 ACC. REC PROFILE X/MM WH.

**Product code:**

F12REECG

Description:

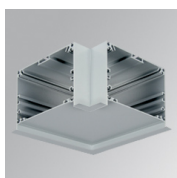
FIL 120 ACC. REC END COVER GR.

**Product code:**

F12REECW

Description:

FIL 120 ACC. REC END COVER WH.

**Product code:**

F12REHCG

Description:

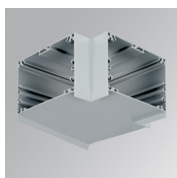
FIL 120 ACC. REC 90° CORNER GR.

**Product code:**

F12REHCW

Description:

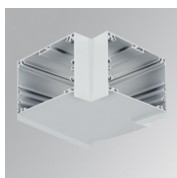
FIL 120 ACC. REC 90° CORNER WH.

**Product code:**

F12SUTJG

Description:

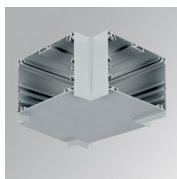
FIL 120 ACC. T JOINT GR.

**Product code:**

F12SUTJW

Description:

FIL 120 ACC. T JOINT WH.



Product code:

F12SUXJG

Description:

FIL 120 ACC. X JOINT GR.



Product code:

F12SUXJW

Description:

FIL 120 ACC. X JOINT WH.

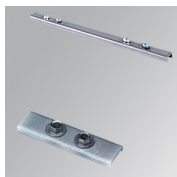


Product code:

F5JO

Description:

ACC. INTM JOINT B



Product code:

F7JO

Description:

ACC. INTM JOINT

ACCESORIES :

Support

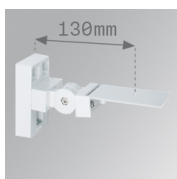


Product code:

ARRO13G

Description:

ACC. ADJ WALL ARM GR.

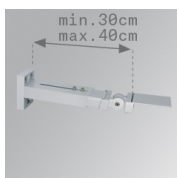


Product code:

ARRO13W

Description:

ACC. ADJ WALL ARM WH.

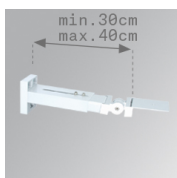


Product code:

ARROEX40G

Description:

ACC. ADJ EXTEN WALL ARM GR.



Product code:

ARROEX40W

Description:

ACC. ADJ EXTEN WALL ARM WH.



Product code:

F5FX75G

Description:

ACC. WALL BRACKET 75MM GR.

F5FX75W

ACC. WALL BRACKET 75MM WH.

ACCESORIES :

Optical

FIL 120



Product code:

F12DIX/MMOP

Description:

FIL 120 ACC. OPAL DIFFUSER X/MM