

DT1SF900A00P8400B



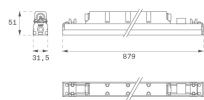
- DUIT SUR 900 900 NW OPAL BK.

Description:

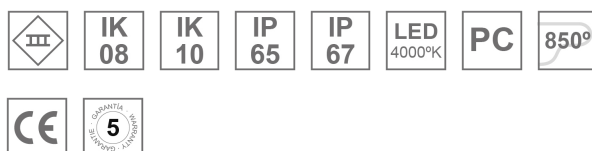
Linear luminaire module of 900 mm for structure adaptation, model DUIT SUR 1800 1800 NW OPAL BK. LAMP brand. Body made of extruded PC, with a fast connection system between modules. Model with LED MID-POWER, with 4000K temperature color and CRI80. Linear optics, OPAL. IP65/IP67 and IK08, IK10 with installation profiles degree of protection. Insulation class III. LED life hour: 50.000h B10. BUG Rate: B0 U1 G0, ULOR: 0%.

Finish: Matte black RAL 9011

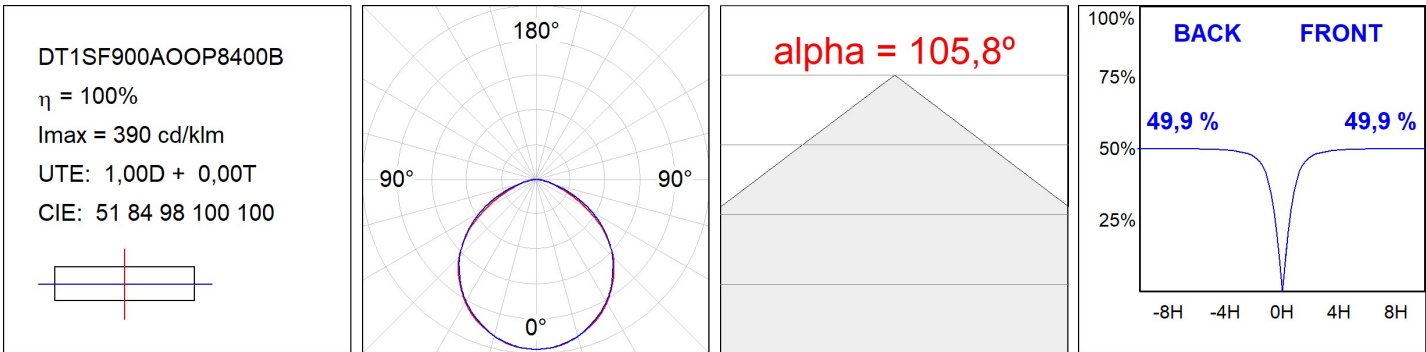
Dimensions: 879 x 31,5 x 51 mm

Weight: 520 g

Installation: Surface
TECHNICAL SPECIFICATIONS:

Light output:	309 lm	°K :	4000
Plum:	3,9W	CRI :	80
Efficacy:	79,3 lm/w	MacAdam:	3
Type:	MID POWER LED	Power Supply:	24VDC
LED Lifetime:	50.000 L90 B10 (Ta=25°C)	Gear:	Without gear (requires external gear)
Power:	3.9W		

Light output tolerance +/- 10%
**CUSTOM MADE OPTIONS:**

PHOTOMETRIC DATA :



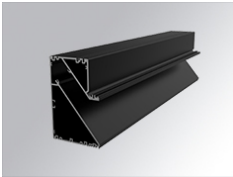
ACCESORIES :

Assembly



Product code:
DTBAASJO

Description:
DUIT ACC BASIC ASYM INTM JOINT



Product code:
DTBAASPR900B

Description:
DUIT ACC. PROF BASIC REC ASYM 900MM BK.



Product code:
DTBAASRCB

Description:
DUIT ACC. BASIC ASYMETRICO END CAP



Product code:
DTBAFX45

Description:
DUIT ACC. BASIC WALL BRACKET 45MM



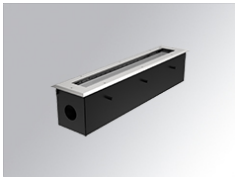
Product code:
DTBAIDPR900B
DTBASFP900B

Description:
DUIT ACC. PROF BASIC IND 900MM BK.
DUIT ACC. PROF BASIC SF 900MM BK.



Product code:
DTBAJO

Description:
DUIT ACC. BASIC SF/IND INTM JOINT



Product code:
DTBAREBO2100I
DTBAREBO900I

Description:
DUIT ACC. REC BOX REC 2100MM IN.
DUIT ACC. REC BOX REC 900MM IN.



Product code:
DTBASFCB

Description:
DUIT ACC. BASIC SUR END COVER BK.



Product code:
DTBASUAJ50

Description:
DUIT ACC.BASIC SUPORT ADJUSTABLE 50MM



Product code:
DTBASUG0100I

Description:
DUIT ACC. RIGID SUSPENSION 100MM INOX.



Product code:

DTBATRCB

Description:

DUIT ACC. BASIC TR END COVER BK.



Product code:

DTBATRJO

Description:

DUIT ACC. BASIC TRIMLESS INTM JOINT



Product code:

DTBATRPR900B

Description:

DUIT ACC. PROF BASIC TRIM 900MM BK.



Product code:

DTFCRI

Description:

DUIT ACC. DUIT WALL BRACKET CORNER



Product code:

DTFSII

Description:

DUIT ACC. DUIT WALL BRACKET SIDE

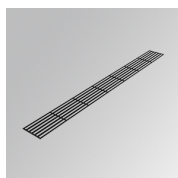


Product code:

DTFXVI

Description:

DUIT ACC. DUIT WALL BRACKET VERTICAL

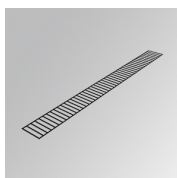


Product code:

DTLOH900BK

Description:

DUIT. ACC. LOUVER GLARE HORIZ. 900MM BK



Product code:

DTLOV900BK

Description:

DUIT. ACC. LOUVER GLARE VERT. 900MM BK

ACCESORIES :

Suspension



Product code:

DTBAIDSUWIDE1000G

Description:

DUIT ACC. BA. IND. QUICK STEEL CABLE 1M



Product code:

DTBAIDSUWIDE4000G

Description:

DUIT ACC. BA. IND. QUICK STEEL CABLE 4M

**Product code:**

F3SUWIDE1000G

Description:

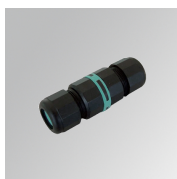
FIL35 ACC. QUICK STEEL CABLE 1M NK.

**Product code:**

F3SUWIDE4000G

Description:

FIL35 ACC. QUICK STEEL CABLE 4M NK.

ACCESSORIES :**Adjustment and control****Product code:**

CT3P67N

Description:

ACC. IP67 3P CONNECTOR

**Product code:**

CTY6P67N

Description:

ACC. IP67 6P CONNECTOR Y

**Product code:**

DRV6710024N

Description:

DRV 100W 24V 100-305V NR IP67

**Product code:**

DRV6712024D

Description:

DRV 120W 24V 90-305V PWM/DA IP67

**Product code:**

DRV673024N

Description:

DRV 30W 24V 220-240V NR IP67

**Product code:**

DRV675024DT8

Description:

DRV 50W 12-24V 200-240V DT8 2CH IP67

**Product code:**

DRV676024D

Description:

DRV 60W 24V 90-305V PWM/DA IP67

**Product code:**

DRV677524N

Description:

DRV 75W 24V 220-240V NR IND IP67



Product code:

DRV679024D

Description:

DRV 90W 24V 90-305V PWM/DA IP67



Product code:

DRV679624DT8

Description:

DRV 96W 24V 100-277V DT8 4CH IP67



Product code:

WI2X1NG

Description:

MANGUERA H05RN-F 2X1 MM2 (X/ML)