

## DT1SF150LOWF8270B



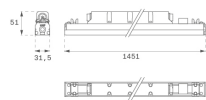
## - DUIT SUR 1500 3250 VWW WFL BK.

**Description:**

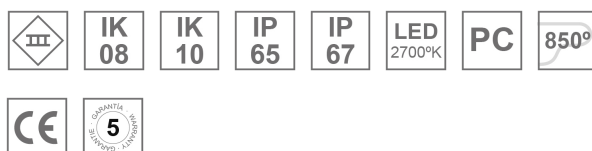
Linear luminaire module of 1451 mm for structure adaptation, model DUIT SUR 1500 3250 VWW WFL BK. LAMP brand. Body made of extruded PC, with a fast connection system between modules. Model with LED MID-POWER, with 2700K temperature color and CRI80. Linear optics, WIDE FLOOD. IP65/IP67 and IK08, IK10 with installation profiles degree of protection. Insulation class III. LED life hours: 50000 L90B10. BUG Rate: B0 U0 G0, ULOR: 0%.

**Finish:** Matte black RAL 9011

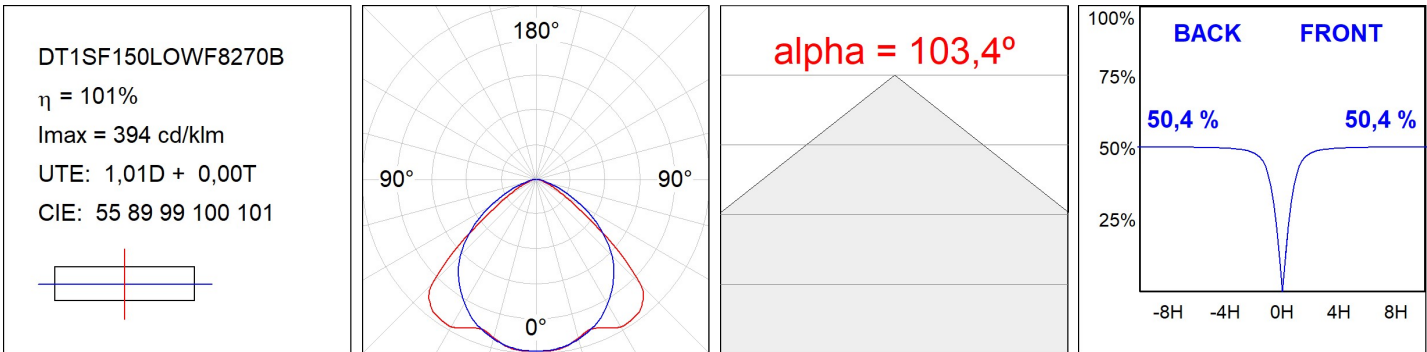
**Dimensions:** 1.451 x 31,5 x 51 mm

**Weight:** 820 g

**Installation:** Surface
**TECHNICAL SPECIFICATIONS:**

<b>Light output:</b>	1.454 lm	<b>°K :</b>	2700
<b>Plum:</b>	16,5W	<b>CRI :</b>	80
<b>Efficacy:</b>	88,1 lm/w	<b>MacAdam:</b>	3
<b>Type:</b>	MID POWER LED	<b>Power Supply:</b>	24VDC
<b>LED Lifetime:</b>	50.000 L90 B10 (Ta=25°C)	<b>Gear:</b>	Without gear (requires external gear)
<b>Power:</b>	16.5W		

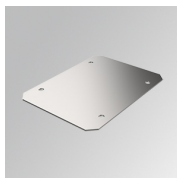
*Light output tolerance +/- 10%*
**CUSTOM MADE OPTIONS:**

PHOTOMETRIC DATA :



## ACCESORIES :

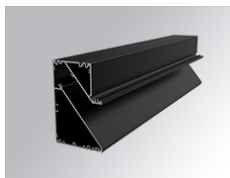
## Assembly

**Product code:**

DTBAASJO

**Description:**

DUIT ACC BASIC ASYM INTM JOINT

**Product code:**

DTBAASPR1500B

**Description:**

DUIT ACC. PROF BASIC REC ASYM 1500MM BK.

**Product code:**

DTBAASRCB

**Description:**

DUIT ACC. BASIC ASYMETRICO END CAP

**Product code:**

DTBAFX45

**Description:**

DUIT ACC. BASIC WALL BRACKET 45MM

**Product code:**

DTBAIDPR1500B

**Description:**

DUIT ACC. PROF BASIC IND 1500MM BK.

DTBASFP1500B

DUIT ACC. PROF BASIC SF 1500MM BK.

**Product code:**

DTBAJO

**Description:**

DUIT ACC. BASIC SF/IND INTM JOINT

**Product code:**

DTBAREBO1500I

**Description:**

DUIT ACC. REC BOX REC 1500MM IN.

**Product code:**

DTBASFCB

**Description:**

DUIT ACC. BASIC SUR END COVER BK.

**Product code:**

DTBASUAJ50

**Description:**

DUIT ACC. BASIC SUPORT ADJUSTABLE 50MM

**Product code:**

DTBASUG0100I

**Description:**

DUIT ACC. RIGID SUSPENSION 100MM INOX.

## DUIT

**Product code:**

DTBATRCB

**Description:**

DUIT ACC. BASIC TR END COVER BK.

**Product code:**

DTBATRJO

**Description:**

DUIT ACC. BASIC TRIMLESS INTM JOINT

**Product code:**

DTBATRPR1500B

**Description:**

DUIT ACC. PROF BASIC TRIM 1500MM BK.

**Product code:**

DTFCRI

**Description:**

DUIT ACC. DUIT WALL BRACKET CORNER

**Product code:**

DTFSII

**Description:**

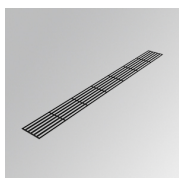
DUIT ACC. DUIT WALL BRACKET SIDE

**Product code:**

DTFXVI

**Description:**

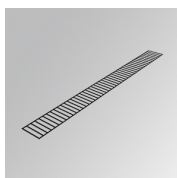
DUIT ACC. DUIT WALL BRACKET VERTICAL

**Product code:**

DTLOH1500BK

**Description:**

DUIT. ACC. LOUVER GLARE HORIZ. 1500MM BK

**Product code:**

DTLOV1500BK

**Description:**

DUIT. ACC. LOUVER GLARE VERT. 1500MM BK

**ACCESORIES :****Suspension****Product code:**

DTBAIDSUWIDE1000G

**Description:**

DUIT ACC. BA. IND. QUICK STEEL CABLE 1M

**Product code:**

DTBAIDSUWIDE4000G

**Description:**

DUIT ACC. BA. IND. QUICK STEEL CABLE 4M

**Product code:**

F3SUWIDE1000G

**Description:**

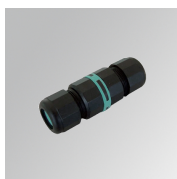
FIL35 ACC. QUICK STEEL CABLE 1M NK.

**Product code:**

F3SUWIDE4000G

**Description:**

FIL35 ACC. QUICK STEEL CABLE 4M NK.

**ACCESSORIES :****Adjustment and control****Product code:**

CT3P67N

**Description:**

ACC. IP67 3P CONNECTOR

**Product code:**

CTY6P67N

**Description:**

ACC. IP67 6P CONNECTOR Y

**Product code:**

DRV6710024N

**Description:**

DRV 100W 24V 100-305V NR IP67

**Product code:**

DRV6712024D

**Description:**

DRV 120W 24V 90-305V PWM/DA IP67

**Product code:**

DRV673024N

**Description:**

DRV 30W 24V 220-240V NR IP67

**Product code:**

DRV675024DT8

**Description:**

DRV 50W 12-24V 200-240V DT8 2CH IP67

**Product code:**

DRV676024D

**Description:**

DRV 60W 24V 90-305V PWM/DA IP67

**Product code:**

DRV677524N

**Description:**

DRV 75W 24V 220-240V NR IND IP67



**Product code:**

DRV679024D

**Description:**

DRV 90W 24V 90-305V PWM/DA IP67



**Product code:**

DRV679624DT8

**Description:**

DRV 96W 24V 100-277V DT8 4CH IP67



**Product code:**

WI2X1NG

**Description:**

MANGUERA H05RN-F 2X1 MM2 (X/ML)