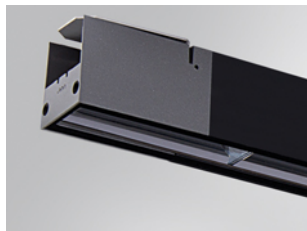


BZ1SF200MOWW840NB



BAZZ AIR WASH 2M 8100 NW BK.

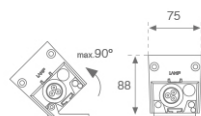
Description:

Outdoor luminaire model BAZZ AIR WASH 2M, LAMP brand. Made of extruded matt black aluminum, recycled at a rate of 80% and transparent polycarbonate diffuser. Model for MID-POWER LED, 4000K colour temperature, CRI 80 and control gear included. With a asymmetric metallised mat polycarbonate reflector. IP67, IK10 protection rating. Insulation class I. It allows swivels between 0° and 90°. Lifetime: 50. 000 L80. BUG Rate: B2 U1 G1, ULOR 0%.

Finish: Anodized matte black

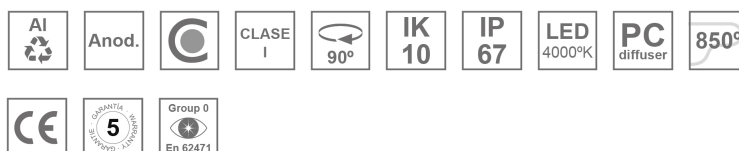
Dimensions: 2.001 x 75 x 88 mm

Weight: 6.698 g

Installation: Surface


TECHNICAL SPECIFICATIONS:

Light output:	5.304 lm	°K :	4000
Plum:	77W	CRI :	80
Efficacy:	68,9 lm/w	MacAdam:	<3
Type:	MID POWER LED	Power Supply:	220-240V 50/60Hz
LED Lifetime:	50.000 L80 (Ta=25°C)	Gear:	Electronic
Power:	75W		

Light output tolerance +/- 10%


CUSTOM MADE OPTIONS:



ACCESORIES :

Assembly



Product code:

BZJO

Description:

BAZZ AIR ACC. CONT LINE JOINT

ACCESORIES :

Suspension



Product code:

SUWIDE1000G

SUWIDE4000G

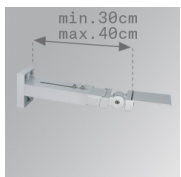
Description:

ACC. QUICK STEEL CABLE 1M NK.

ACC. QUICK STEEL CABLE 4M NK.

ACCESORIES :

Support



Product code:

ARROEX40G

Description:

ACC. ADJ EXTEN WALL ARM GR.



Product code:

BZSFCL1

BZSFCL2

Description:

BAZZ AIR ACC. Ø120 POLE 1CLAMP GR.

BAZZ AIR ACC. Ø120 POLE 2CLAMP GR.