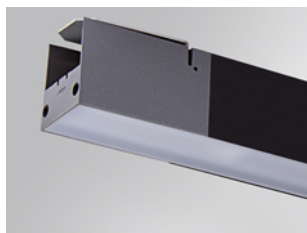


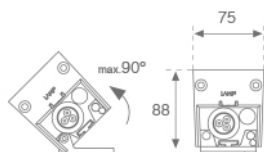
BZ1SF200MOOP830NB



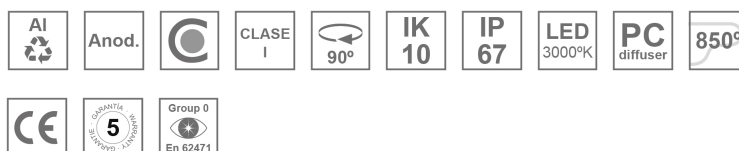
BAZZ AIR OPAL 2M 8100 WW BK.

Description:

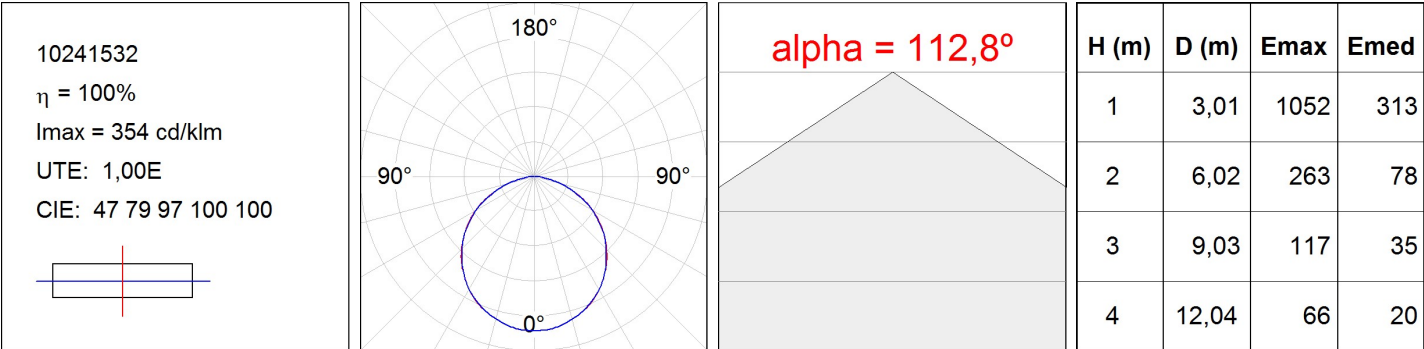
Outdoor luminaire model BAZZ AIR OPAL 2M, LAMP brand. Made of extruded matt black aluminum, recycled at a rate of 80% and opal polycarbonate diffuser. Model for MID-POWER LED, 3000K colour temperature, CRI 80 and control gear included. IP67, IK10 protection rating. Insulation class I. It allows swivels between 0° and 90°. Lifetime: 50.000 L80. BUG Rate: B1 U1 G1, ULOR 0%.

Finish: Anodized matte black**Dimensions:** 2.001 x 75 x 88 mm**Weight:** 6.098 g**Installation:** Surface**TECHNICAL SPECIFICATIONS:**

Light output:	3.218 lm	°K :	3000
Plum:	66W	CRI :	80
Efficacy:	49 lm/w	MacAdam:	<3
Type:	MID POWER LED	Power Supply:	220-240V 50/60Hz
LED Lifetime:	50.000 L80 (Ta=25°C)	Gear:	Electronic
Power:	63W		

Light output tolerance +/- 10%**CUSTOM MADE OPTIONS:**

PHOTOMETRIC DATA :



ACCESORIES :**Assembly****Product code:**

BZJO

Description:

BAZZ AIR ACC. CONT LINE JOINT

ACCESORIES :**Suspension****Product code:**

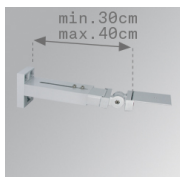
SUWIDE1000G

SUWIDE4000G

Description:

ACC. QUICK STEEL CABLE 1M NK.

ACC. QUICK STEEL CABLE 4M NK.

ACCESORIES :**Support****Product code:**

ARROEX40G

Description:

ACC. ADJ EXTEN WALL ARM GR.

**Product code:**

BZSFCL1

BZSFCL2

Description:

BAZZ AIR ACC. Ø120 POLE 1CLAMP GR.

BAZZ AIR ACC. Ø120 POLE 2CLAMP GR.