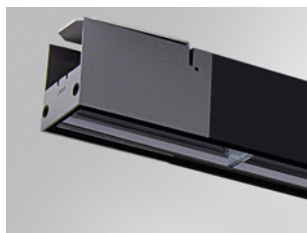


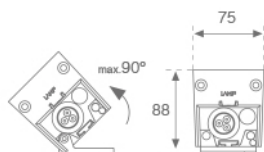
## BZ1SF200LOAS830NB



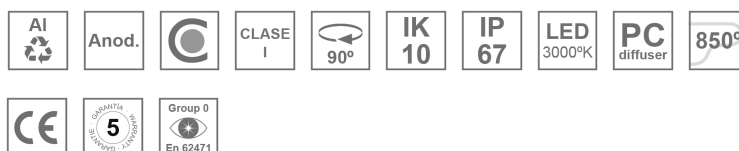
## BAZZ AIR ASYM 2M 4200 WW BK.

**Description:**

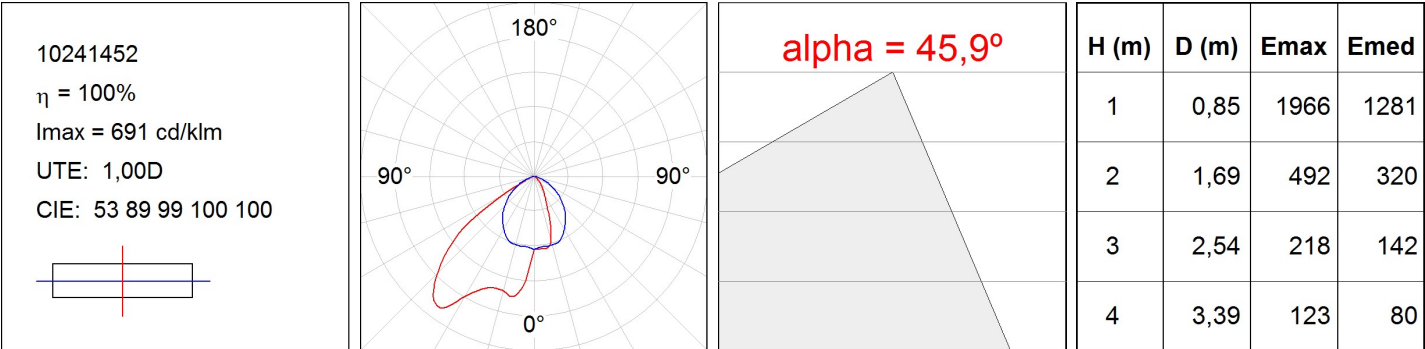
Outdoor luminaire model BAZZ AIR ASYM 2M, LAMP brand. Made of extruded matt black aluminum, recycled at a rate of 80% and transparent polycarbonate diffuser. Model for MID-POWER LED, 3000K colour temperature, CRI 80 and control gear included. With a asymmetric metallised mat polycarbonate reflector. IP67, IK10 protection rating. Insulation class I. It allows swivels between 0° and 90°. Lifetime: 50. 000 L80. BUG Rate: B2 U1 G1, ULOR 0%.

**Finish:** Anodized matte black**Dimensions:** 2.001 x 75 x 88 mm**Weight:** 6.698 g**Installation:** Surface**TECHNICAL SPECIFICATIONS:**

<b>Light output:</b>	4.202 lm	<b>°K :</b>	3000
<b>Plum:</b>	40W	<b>CRI :</b>	80
<b>Efficacy:</b>	105 lm/w	<b>MacAdam:</b>	<3
<b>Type:</b>	MID POWER LED	<b>Power Supply:</b>	220-240V 50/60Hz
<b>LED Lifetime:</b>	50.000 L80 (Ta=25°C)	<b>Gear:</b>	Electronic
<b>Power:</b>	38W		

**Light output tolerance +/- 10%****CUSTOM MADE OPTIONS:**

PHOTOMETRIC DATA :



---

**ACCESORIES :**

**Assembly**



**Product code:**

BZJO

**Description:**

BAZZ AIR ACC. CONT LINE JOINT

---

**ACCESORIES :**

**Suspension**



**Product code:**

SUWIDE1000G

SUWIDE4000G

**Description:**

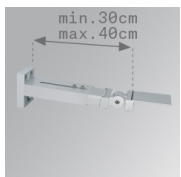
ACC. QUICK STEEL CABLE 1M NK.

ACC. QUICK STEEL CABLE 4M NK.

---

**ACCESORIES :**

**Support**



**Product code:**

ARROEX40G

**Description:**

ACC. ADJ EXTEN WALL ARM GR.



**Product code:**

BZSFCL1

BZSFCL2

**Description:**

BAZZ AIR ACC. Ø120 POLE 1CLAMP GR.

BAZZ AIR ACC. Ø120 POLE 2CLAMP GR.