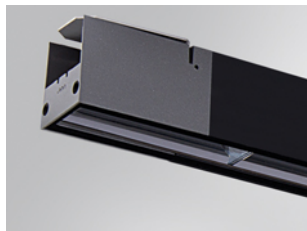


BZ1SF100LOS840NB



BAZZ AIR SYM 1M 2100 NW BK.

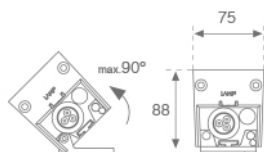
Description:

Outdoor luminaire model BAZZ AIR SYM 1M, LAMP brand. Made of extruded matt black aluminum, recycled at a rate of 80% and transparent polycarbonate diffuser. Model for MID-POWER LED, 4000K colour temperature, CRI 80 and control gear included. With a symmetric metallised mat polycarbonate reflector. IP67, IK10 protection rating. Insulation class I. It allows swivels between 0° and 90°. Lifetime: 50.000 L80. BUG Rate: B1 U1 G0, ULOR 0%.

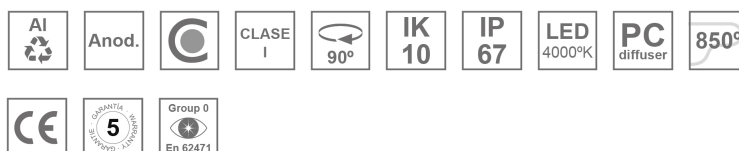
Finish: Anodized matte black

Dimensions: 1.008 x 75 x 88 mm

Weight: 3.730 g

Installation: Surface
**TECHNICAL SPECIFICATIONS:**

Light output:	2.301 lm	°K :	4000
Plum:	20,6W	CRI :	80
Efficacy:	112 lm/w	MacAdam:	<3
Type:	MID POWER LED	Power Supply:	220-240V 50/60Hz
LED Lifetime:	50.000 L80 (Ta=25°C)	Gear:	Electronic
Power:	19W		

Light output tolerance +/- 10%
**CUSTOM MADE OPTIONS:**

ACCESORIES :

Assembly



Product code:

BZJO

Description:

BAZZ AIR ACC. CONT LINE JOINT

ACCESORIES :

Suspension



Product code:

SUWIDE1000G

SUWIDE4000G

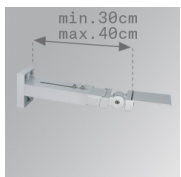
Description:

ACC. QUICK STEEL CABLE 1M NK.

ACC. QUICK STEEL CABLE 4M NK.

ACCESORIES :

Support



Product code:

ARROEX40G

Description:

ACC. ADJ EXTEN WALL ARM GR.



Product code:

BZSFCL1

BZSFCL2

Description:

BAZZ AIR ACC. Ø120 POLE 1CLAMP GR.

BAZZ AIR ACC. Ø120 POLE 2CLAMP GR.