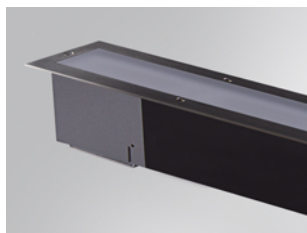


## BZ1RE200MOOP840NB



## BAZZ REC OPAL 2M 8100 NW

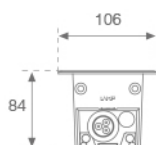
## Description:

Outdoor recessed luminaire model BAZZ REC OPAL 2M 8100 NW, LAMP brand. Made of extruded matt black aluminum, recycled at a rate of 80%. AISI304 stainless steel frame and opal tempered glass. Model for MID-POWER LED, 4000K colour temperature, CRI 80 and control gear included. IP67, IK07 protection rating. Insulation class I. Lifetime: 50.000 L80 B10

**Finish:** Anodized matte black

**Dimensions:** 2.036 x 106 x 84 mm

**Weight:** 9.286 g



**Installation:** Floor recessed

## TECHNICAL SPECIFICATIONS:

<b>Light output:</b>	3.498 lm	<b>°K :</b>	4000
<b>Plum:</b>	66W	<b>CRI :</b>	80
<b>Efficacy:</b>	53 lm/w	<b>MacAdam:</b>	<3
<b>Type:</b>	MID POWER LED	<b>Power Supply:</b>	220-240V 50/60Hz
<b>LED Lifetime:</b>	50.000 L80 B10 (Ta=25°C)	<b>Gear:</b>	Electronic
<b>Power:</b>	63W		

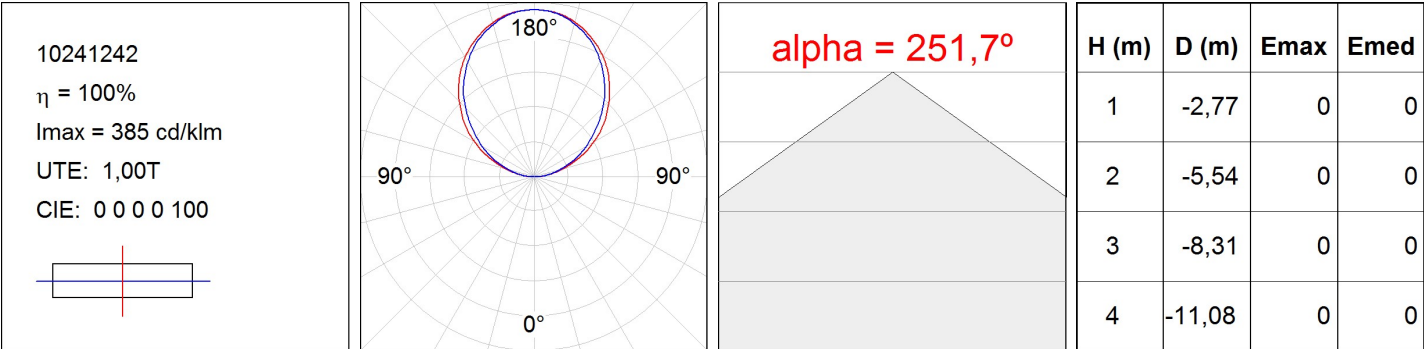
*Light output tolerance +/- 10%*



## CUSTOM MADE OPTIONS:



PHOTOMETRIC DATA :



ACCESORIES :

Assembly



Product code:  
BZREBO2000

Description:  
BAZZ ACC. 2M REC BOX



Product code:  
CT3P68G

Description:  
ACC. IP68 Ø8-10MM CONNECTOR



Product code:  
CT3P68O

Description:  
ACC. IP68 Ø6,5-12MM CONNECTOR