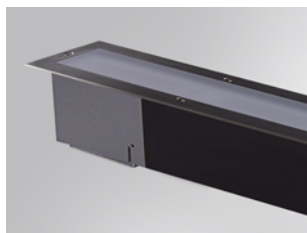


## BZ1RE200MOOP830NB



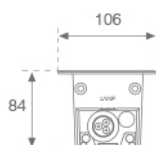
## BAZZ REC OPAL 2M 8100 WW

**Description:**

Outdoor recessed luminaire model BAZZ REC OPAL 2M, LAMP brand. Made of extruded matt black aluminum, recycled at a rate of 80%. AISI304 stainless steel frame and opal tempered glass. Model for MID-POWER LED, 3000K colour temperature, CRI 80 and control gear included. IP67, IK07 protection rating. Insulation class I. Lifetime: 50.000 L80 B10

**Finish:** Anodized matte black

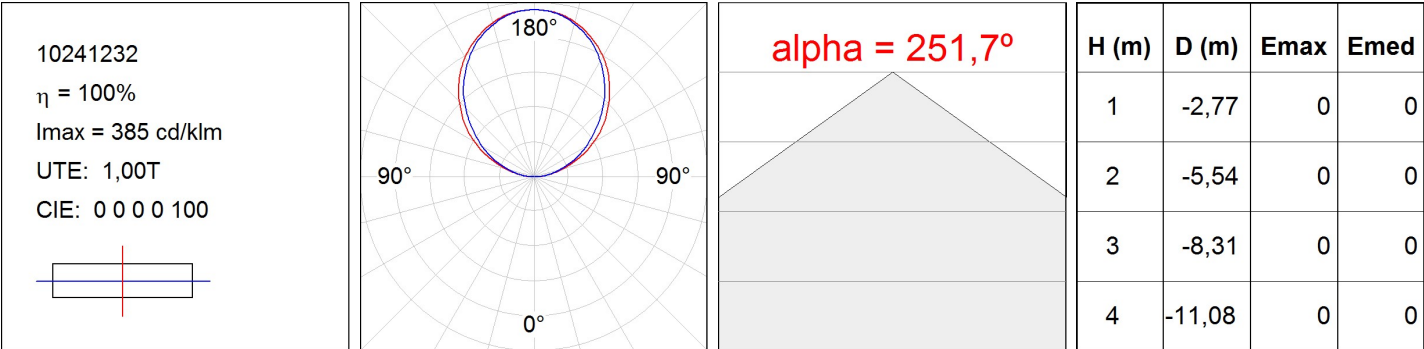
**Dimensions:** 2.036 x 106 x 84 mm

**Weight:** 9.286 g

**Installation:** Floor recessed
**TECHNICAL SPECIFICATIONS:**

<b>Light output:</b>	3.300 lm	<b>°K :</b>	3000
<b>Plum:</b>	66W	<b>CRI :</b>	80
<b>Efficacy:</b>	50 lm/w	<b>MacAdam:</b>	<3
<b>Type:</b>	MID POWER LED	<b>Power Supply:</b>	220-240V 50/60Hz
<b>LED Lifetime:</b>	50.000 L80 B10 (Ta=25°C)	<b>Gear:</b>	Electronic
<b>Power:</b>	63W		

*Light output tolerance +/- 10%*
**CUSTOM MADE OPTIONS:**

PHOTOMETRIC DATA :



---

**ACCESORIES :**

**Assembly**



**Product code:**

BZREBO2000

**Description:**

BAZZ ACC. 2M REC BOX



**Product code:**

CT3P68G

**Description:**

ACC. IP68 Ø8-10MM CONNECTOR



**Product code:**

CT3P68O

**Description:**

ACC. IP68 Ø6,5-12MM CONNECTOR