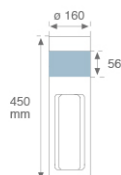
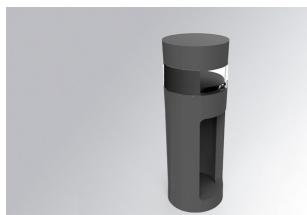


B-SIDE LED

BS2184510830NA



B-SIDE G2 180° 450 1200 WW ANT

Description:

Bollard model B-SIDE G2 180° LED 450 1200, LAMP brand. Manufactured from die-cast aluminium and extruded body of recycled aluminium with an 80% lacquered rate and translucent diffuser. 450mm height. Its base has an anti-corrosion electro coating treatment. 3000K CRI 80 LED. Control gear included. IP65, IK06 protection rating. Insulation class I. Lifetime: 72. 000 L80 B10. BUG Rate: B0 U2 G1, ULOR: 7,4%. Available finishes: anthracite and textured grey.

Finish: Textured anthracite

Weight: 4.384 g

Installation: Standing

TECHNICAL SPECIFICATIONS:

Light output:	350 lm	°K :	3000
Plum:	8,7W	CRI :	80
Efficacy:	40,2 lm/w	MacAdam:	3
Type:	MID POWER LED	Power Supply:	220-240V 50/60Hz
LED Lifetime:	72.000 L80 B10 (Ta=25°C)	Gear:	Electronic
Power:	6,5W		

Light output tolerance +/- 10%


CUSTOM MADE OPTIONS:



B-SIDE LED

BS2184510830NA

B-SIDE G2 180° 450 1200 WW ANT

PHOTOMETRIC DATA :

