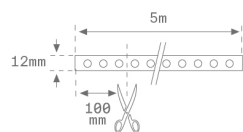


9600930

**FINE LED STRIP IP67 24V 5M 3600LM WW****Description:**

Flexible strip model FINE LED STRIP IP65 24V 5M 2500 RGB, LAMP brand. Model for RGB LED. IP65 protection rating. Insulation class III. Supplied with a 5 meter coil and a 3M adhesive on the rear. These strips allow modular cut.

Weight: 400 g**Installation:****TECHNICAL SPECIFICATIONS:**

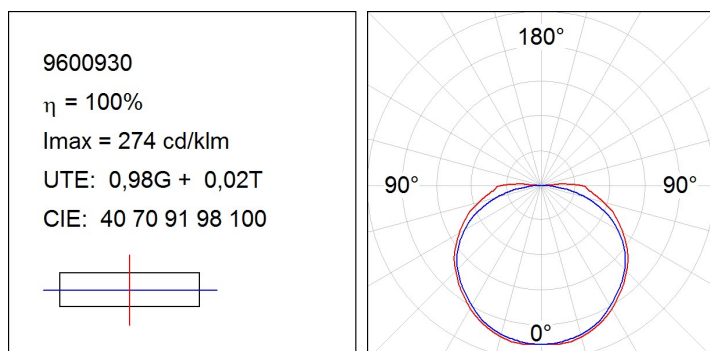
		°K :	RGB
Type:	MID POWER		
Power:	69W		

**CUSTOM MADE OPTIONS:**

9600930

FINE LED STRIP IP67 24V 5M 3600LM WW

PHOTOMETRIC DATA :



ACCESORIES :
Assembly**Product code:**

9600423

9600433

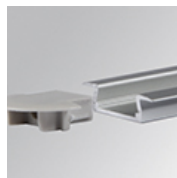
9600443

Description:

FINE LED STRIP ACC. 6MM SUR PROFILE 2M

FINE LED STRIP ACC. 6MM SUR END COVER

FINE LED STRIP ACC. 6MM SUR HOLE COVER

**Product code:**

9600453

9600463

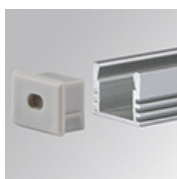
9600473

Description:

FINE LED STRIP ACC. 6MM REC PROFILE 2M

FINE LED STRIP ACC. 6MM REC END COVER

FINE LED STRIP ACC. 6MM REC HOLE COVER

**Product code:**

9600483

9600493

9600503

Description:

FINE LED STRIP ACC. 12MM SUR PROFILE 2M

FINE LED STRIP ACC. 12MM SUR END COVER

FINE LED STRIP ACC. 12MM SUR HOLE COVER

**Product code:**

9600513

9600523

9600533

Description:

FINE LED STRIP ACC. 12MM REC PROFILE 2M

FINE LED STRIP ACC. 12MM REC END COVER

FINE LED STRIP ACC. 12MM REC HOLE COVER

**Product code:**

9600543

9600553

9600563

Description:

FINE LED STRIP ACC. 45° PROFILE 2M

FINE LED STRIP ACC. 45° END COVER

FINE LED STRIP ACC. 45° HOLE COVER

**Product code:**

9600573

9600583

Description:

FINE LED STRIP ACC. 45° BRACKET

FINE LED STRIP ACC. SUR BRACKET

ACCESORIES :
Optical**Product code:**

9600400

Description:

FINE LED STRIP ACC. OPAL DIFFUSER 2M

**Product code:**

9600410

Description:

FINE LED STRIP ACC. TRANS DIFFUSER 2M

ACCESORIES :
Adjustment and control



Product code:

9242530

Description:

ACC. DRIVER IP68 24V 80W



Product code:

9246800

Description:

ACC. DRIVER 24V 96W



Product code:

9247460

Description:

ACC. DRIVER 24V 20W



Product code:

9247500

Description:

ACC. DRIVER 24V 60W



Product code:

9640920

Description:

ACC. RGB RCONTROLLER 24V 432W



Product code:

9650930

Description:

ACC. 1-10V PWM LED CONVERTER 24V 120W

9680930

ACC. DALI PWM LED CONVERTER 24V 120W



Product code:

9680940

Description:

ACC. DALI/DMX PWM RGB CONVERTER 24V 144W DRV2010024D



Product code:

Description:

DRV 100W 24V 220-240V DA IND.



Product code:

DRV6710024D

Description:

DRV 100W 24V 100-305V DA IP67



Product code:

DRV6710024N

Description:

DRV 100W 24V 100-305V NR IP67


Importante:

- 1- En caso de cortes intermedios, para una conexión segura se recomienda soldar los cables a los terminales +/- de la tira flexible. Conectar la tira en la polaridad correcta.
- 2- En caso de cortes intermedios en los modelos IP65, se deben sellar las extremidades cortadas para garantizar el IP65.
- 3- La instalación debe ser sobre superficies lisas, limpias de polvo y grasa, y con grapas de sujeción. En otro tipo de superficie, se recomienda instalar la tira en perfilera de aluminio.
- 4- Cada tira de LED (bobina de 5m) debe ir alimentada con un driver. Para asegurar las prestaciones del producto, utilizar los drivers homologados por LAMP.
- 5- La garantía no cubre los daños creados por el incumplimiento de las recomendaciones.

Important:

- 1- In case of intermediate cuts, for a secure connection it is recommended to solder the wires to the +/- flexible strip terminals. Connect the strip with the correct polarity.
- 2- In case of intermediate cuts in IP65 models you must seal the cut ends to ensure the IP65.
- 3- The installation must be carried out on smooth, dust and fat-free surfaces using clamping plates. On other types of surface you are recommended to install the strip on aluminium profiles.
- 4- Each LED strip (5m coil) must be powered by a driver. To ensure product performance, use LAMP-approved drivers.
- 5- The warranty does not cover any damage caused owing to a breach of the recommendations.

Important:

- 1- En cas de découpes intermédiaires, pour une connexion sécurisée, il est recommandé de souder les câbles aux bornes +/- de la bandeau flexible. Connecter le bandeau sur la polarité appropriée.
- 2- En cas de découpes intermédiaires dans les modèles IP65 vous devrez protéger les extrémités coupées afin d'assurer l'IP65.
- 3- L'installation doit s'effectuer sur des surfaces lisses, exemptes de poussière et de graisse et au moyen d'agrafes de fixation. Sur tout autre type de surface, on recommande d'installer le bandeau sur un profilé en aluminium.
- 4- Chaque bandeau à LED (bobine de 5 m) doit être alimenté avec un driver. Pour garantir les prestations du produit, utiliser les drivers homologués par LAMP.
- 5- La garantie ne couvre pas les dommages dérivés du non respect des recommandations.