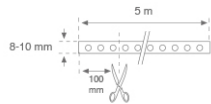


FINE LED

9600900



FINE LED IP20 24V 7250LM 90W 830 5MX8

Description:

Flexible strip model FINE LED STRIP IP20 24V 5M 7000 WW, LAMP brand. Model for MID-POWER LED, warm white color temperature. IP20 protection rating. Insulation class III. Supplied with a 5 meter coil and a 3M adhesive on the rear. These strips allow modular cut.

Weight: 148 g

Installation: Surface

TECHNICAL SPECIFICATIONS:

Light output:	7.000 lm	°K :	3000
Type:	MID POWER CITIZEN	CRI :	80
LED Lifetime:	50.000 L70	MacAdam:	3
Power:	93W	Gear:	Without gear (requires external gear)

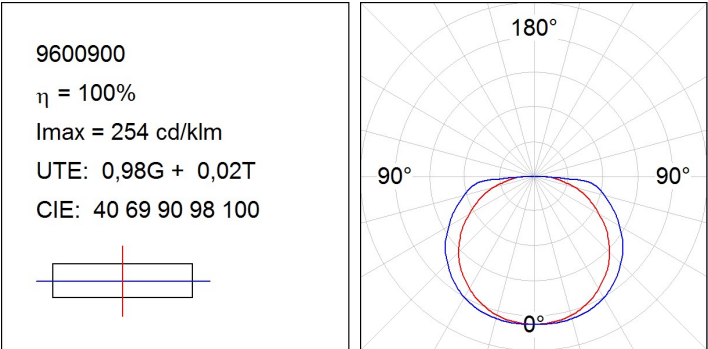
Light output tolerance +/- 10%



9600900

FINE LED IP20 24V 7250LM 90W 830 5MX8

PHOTOMETRIC DATA :



FINE LED

ACCESORIES :

Assembly

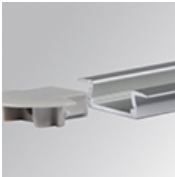


Product code:

9600423  
9600433  
9600443

Description:

FINE LED STRIP ACC. 6MM SUR PROFILE 2M  
FINE LED STRIP ACC. 6MM SUR END COVER  
FINE LED STRIP ACC. 6MM SUR HOLE COVER



Product code:

9600453  
9600463  
9600473

Description:

FINE LED STRIP ACC. 6MM REC PROFILE 2M  
FINE LED STRIP ACC. 6MM REC END COVER  
FINE LED STRIP ACC. 6MM REC HOLE COVER



Product code:

9600483  
9600493  
9600503

Description:

FINE LED STRIP ACC. 12MM SUR PROFILE 2M  
FINE LED STRIP ACC. 12MM SUR END COVER  
FINE LED STRIP ACC. 12MM SUR HOLE COVER



Product code:

9600513  
9600523  
9600533

Description:

FINE LED STRIP ACC. 12MM REC PROFILE 2M  
FINE LED STRIP ACC. 12MM REC END COVER  
FINE LED STRIP ACC. 12MM REC HOLE COVER



Product code:

9600543  
9600553  
9600563

Description:

FINE LED STRIP ACC. 45° PROFILE 2M  
FINE LED STRIP ACC. 45° END COVER  
FINE LED STRIP ACC. 45° HOLE COVER



Product code:

9600573  
9600583

Description:

FINE LED STRIP ACC. 45° BRACKET  
FINE LED STRIP ACC. SUR BRACKET



Product code:

9600990

Description:

ACC. ELECTROSTATICS WRIST STRAP

ACCESORIES :

Optical



**Product code:**

9600400

**Description:**

FINE LED STRIP ACC. OPAL DIFFUSER 2M



**Product code:**

9600410

**Description:**

FINE LED STRIP ACC. TRANS DIFFUSER 2M

## ACCESSORIES :

### Adjustment and control



**Product code:**

9247500

**Description:**

ACC. DRIVER 24V 60W



**Product code:**

9640920

**Description:**

ACC. RGB RCONTROLLER 24V 432W



**Product code:**

9650930

**Description:**

ACC. 1-10V PWM LED CONVERTER 24V 120W

9680930

ACC. DALI PWM LED CONVERTER 24V 120W



**Product code:**

9680940

**Description:**

ACC. DALI/DMX PWM RGB CONVERTER 24V 144W



**Product code:**

DRV2010024D

**Description:**

DRV 100W 24V 220-240V DA IND.



**Product code:**

DRV6710024N

**Description:**

DRV 100W 24V 100-305V NR IP67

**Importante:**

- 1- En caso de cortes intermedios, para una conexión segura se recomienda soldar los cables a los terminales +/- de la tira flexible. Conectar la tira en la polaridad correcta.
- 2- En caso de cortes intermedios en los modelos IP65, se deben sellar las extremidades cortadas para garantizar el IP65.
- 3- La instalación debe ser sobre superficies lisas, limpias de polvo y grasa, y con grapas de sujeción. En otro tipo de superficie, se recomienda instalar la tira en perfilera de aluminio.
- 4- Cada tira de LED (bobina de 5m) debe ir alimentada con un driver. Para asegurar las prestaciones del producto, utilizar los drivers homologados por LAMP.
- 5- La garantía no cubre los daños creados por el incumplimiento de las recomendaciones.

**Important:**

- 1- In case of intermediate cuts, for a secure connection it is recommended to solder the wires to the +/- flexible strip terminals. Connect the strip with the correct polarity.
- 2- In case of intermediate cuts in IP65 models you must seal the cut ends to ensure the IP65.
- 3- The installation must be carried out on smooth, dust and fat-free surfaces using clamping plates. On other types of surface you are recommended to install the strip on aluminium profiles.
- 4- Each LED strip (5m coil) must be powered by a driver. To ensure product performance, use LAMP-approved drivers.
- 5- The warranty does not cover any damage caused owing to a breach of the recommendations.

**Important:**

- 1- En cas de découpes intermédiaires, pour une connexion sécurisée, il est recommandé de souder les câbles aux bornes +/- de la bandeau flexible. Connecter le bandeau sur la polarité appropriée.
- 2- En cas de découpes intermédiaires dans les modèles IP65 vous devrez protéger les extrémités coupées afin d'assurer l'IP65.
- 3- L'installation doit s'effectuer sur des surfaces lisses, exemptes de poussière et de graisse et au moyen d'agrafes de fixation. Sur tout autre type de surface, on recommande d'installer le bandeau sur un profilé en aluminium.
- 4- Chaque bandeau à LED (bobine de 5 m) doit être alimenté avec un driver. Pour garantir les prestations du produit, utiliser les drivers homologués par LAMP.
- 5- La garantie ne couvre pas les dommages dérivés du non respect des recommandations.