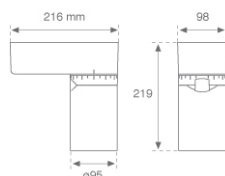


8941940

**LOOK SUR CL.I 3000 NW FL WH.****Description:**

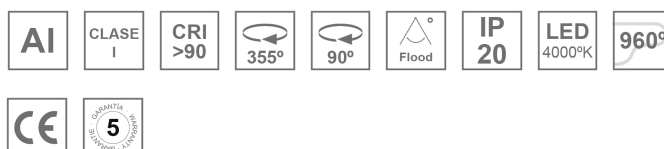
Multi-directional to adapt to wall or ceiling projector model LOOK SUR CL.I 3000 NW FL WH., LAMP brand. Made of injected aluminium lacquered in texturised white. Passive heat dissipation for a proper thermal management. Model for COB LED. Neutral white colour temperature and control gear included. With Flood reflector in high purity aluminium. Insulation class I.

**Finish:** Texturised matte white RAL 9016

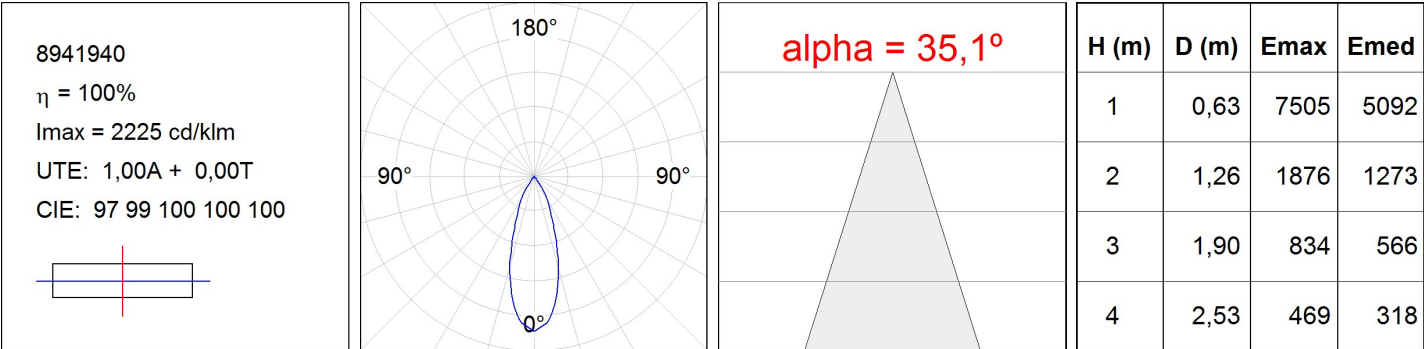
**Weight:** 2.116 g

**Installation:** Surface
**TECHNICAL SPECIFICATIONS:**

<b>Light output:</b>	3.899 lm	<b>°K :</b>	4000
<b>Plum:</b>	42W	<b>CRI :</b>	90
<b>Efficacy:</b>	91,5 lm/w	<b>MacAdam:</b>	3
<b>Type:</b>	COB TRIDONIC	<b>Power Supply:</b>	220-240V 50/60Hz
<b>LED Lifetime:</b>	50.000 L80	<b>Gear:</b>	Electronic
<b>Power:</b>	38W		

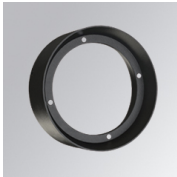
*Light output tolerance +/- 10%*


PHOTOMETRIC DATA :



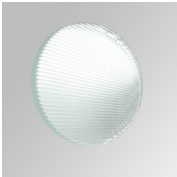
ACCESORIES :

Optical



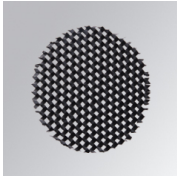
**Product code:**  
9600252

**Description:**  
LOOK/IMAG ACC. ADAPTOR



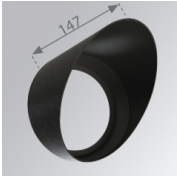
**Product code:**  
9600262

**Description:**  
LOOK/IMAG ACC. FRESNEL LENS



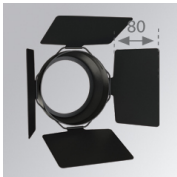
**Product code:**  
9600272

**Description:**  
LOOK/IMAG ACC. HONEYCOMB GRILLE



**Product code:**  
9600282

**Description:**  
LOOK/IMAG ACC. SCREEN



**Product code:**  
9600292

**Description:**  
LOOK/IMAG ACC. ANTI-GLARE LOUVRES



**Product code:**  
9600372

**Description:**  
LOOK/IMAG ACC. BUFFER

