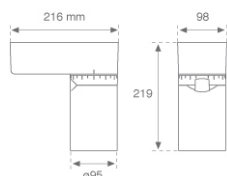


8941912

**LOOK SUR CL.II 2000 WW SP GRH.****Description:**

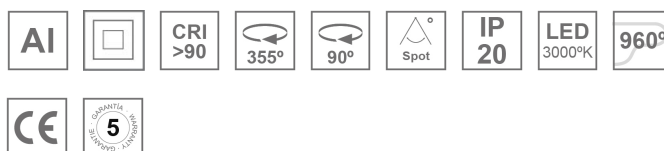
Multi-directional to adapt to wall or ceiling projector model LOOK SUR CL.II 2000 WW SP GRH., LAMP brand. Made of injected aluminium lacquered in texturised graphite. Passive heat dissipation for a proper thermal management. Model for COB LED. Warm white colour temperature and control gear included. With Spot reflector in high purity aluminium. Insulation class II.

Finish: Texturised matte graphite RAL 7021

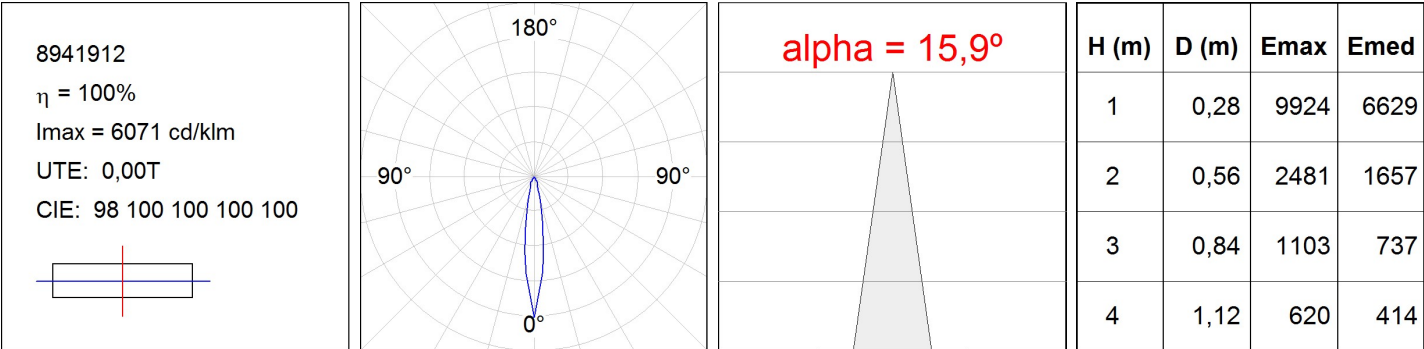
Weight: 1.900 g

Installation: Surface
TECHNICAL SPECIFICATIONS:

Light output:	2.066 lm	°K :	3000
Plum:	26,9W	CRI :	90
Efficacy:	76,8 lm/w	MacAdam:	3
Type:	COB TRIDONIC	Power Supply:	220-240V 50/60Hz
LED Lifetime:	50.000 L90	Gear:	Electronic
Power:	24W		

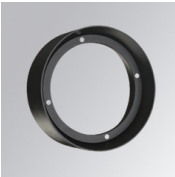
Light output tolerance +/- 10%


PHOTOMETRIC DATA :



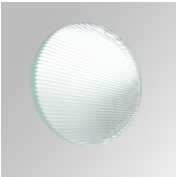
ACCESORIES :

Optical



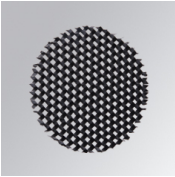
Product code:
9600252

Description:
LOOK/IMAG ACC. ADAPTOR



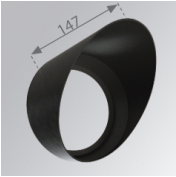
Product code:
9600262

Description:
LOOK/IMAG ACC. FRESNEL LENS



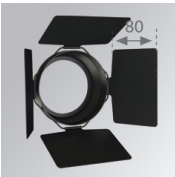
Product code:
9600272

Description:
LOOK/IMAG ACC. HONEYCOMB GRILLE



Product code:
9600282

Description:
LOOK/IMAG ACC. SCREEN



Product code:
9600292

Description:
LOOK/IMAG ACC. ANTI-GLARE LOUVRES



Product code:
9600372

Description:
LOOK/IMAG ACC. BUFFER

