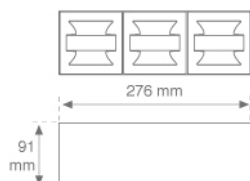
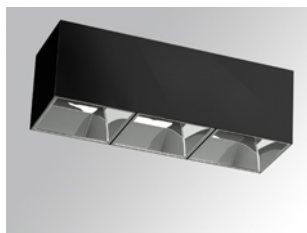


TRAIN

8743103



TRAIN TRP SRT 900 WW CRM.

Description:

Straight triple surface mounting downlight model TRAIN TRP SRT 900 WW CRM., LAMP brand. Made of chrome lacquered extruded aluminium. Model for LED MID-POWER, with warm white colour temperature and control gear included. It has a patented optical unit made of metallized matte ABS for high visual comfort (UGR<19). Insulation class I.

Finish: Gloss grey + Alodine 1500

Weight: 1.500 g

Installation: Surface
TECHNICAL SPECIFICATIONS:

Light output:	924 lm	°K :	3000
Plum:	25,2W	CRI :	80
Efficacy:	36,7 mW	MacAdam:	3
Type:	COB CITIZEN	Power Supply:	100-240V 50/60Hz
LED Lifetime:	75.000 L80 B10	Gear:	Electronic
Power:	18W		

Light output tolerance +/- 10%


PHOTOMETRIC DATA :

