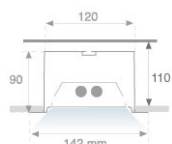


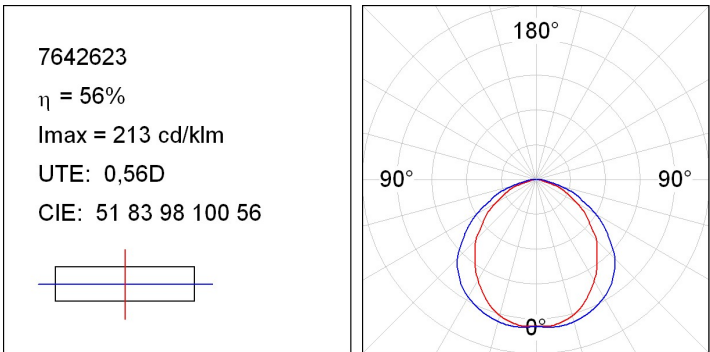
7642623

**FIL MED OPAL REC INTM T5 2X35/49W GR.****Description:**

Recessed structure model FIL MED OPAL REC INTM T5 2X35/49W GR., LAMP brand. Made of satin grey lacquered extruded aluminium and intermediate staggered reflector. Model for T5 2X35/49W lamp and multi-power control gear included. With opal polycarbonate diffuser. IP42 protection rating. Insulation class I.

Finish: Gloss grey**Dimensions:** 1.475 x 142 x 90 mm**Weight:** 5.600 g**Installation:** Recessed**Recessing measures:** 1,475 x 130 x 110 mm**TECHNICAL SPECIFICATIONS:****Plum:** 79W/107W**Type:** T5/T16**Power:** 2X35/49W**Lampholder:** G5**Power Supply:** 230V-50HZ**Gear:** Electronic

PHOTOMETRIC DATA :



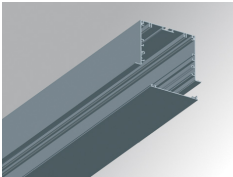
ACCESORIES :

Assembly



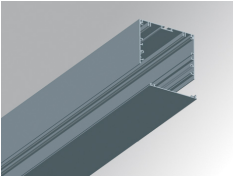
Product code:
4806043

Description:
ACC. INTM JOINT



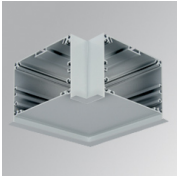
Product code:
7605013

Description:
FIL MED ACC. REC PROFILE X/MM GR.



Product code:
7605103

Description:
FIL MED ACC. COVER X/MM GR.



Product code:
7605213

Description:
FIL MED ACC. REC 90° CORNER GR.



Product code:
7606423

Description:
FIL MED ACC. REC END COVER GR.

