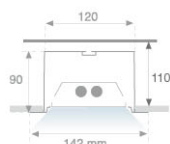


7642610

**FIL MED OPAL REC INTM T5 2X28/54W WH.****Description:**

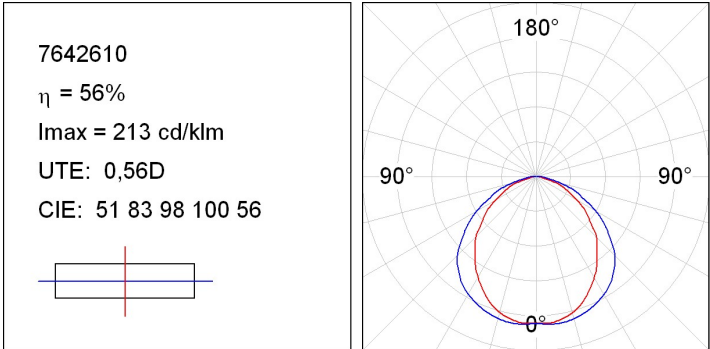
Recessed structure model FIL MED OPAL REC INTM T5 2X28/54W WH., LAMP brand. Made of matt white lacquered extruded aluminium and intermediate staggered reflector. Model for T5 2X28/54W lamp and multi-power control gear included. With opal polycarbonate diffuser. IP42 protection rating. Insulation class I.

Finish: Matte white RAL 9010**Dimensions:** 1.175 x 142 x 90 mm**Weight:** 4.440 g**Installation:** Recessed**Recessing measures:** 1,175 x 130 x 110 mm**TECHNICAL SPECIFICATIONS:****Plum:** 63W/115W**Type:** T5/T16**Power:** 2X28/54W**Lampholder:** G5**Power Supply:** 230V-50HZ**Gear:** Electronic

7642610

FIL MED OPAL REC INTM T5 2X28/54W WH.

PHOTOMETRIC DATA :



ACCESORIES :

Assembly

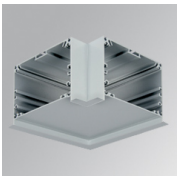


Product code:

4806043

Description:

ACC. INTM JOINT



Product code:

7605210

Description:

FIL MED ACC. REC 90° CORNER WH.



Product code:

7606420

Description:

RECESSECED END COVER FILMED WHITE COLO

