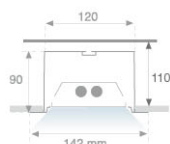


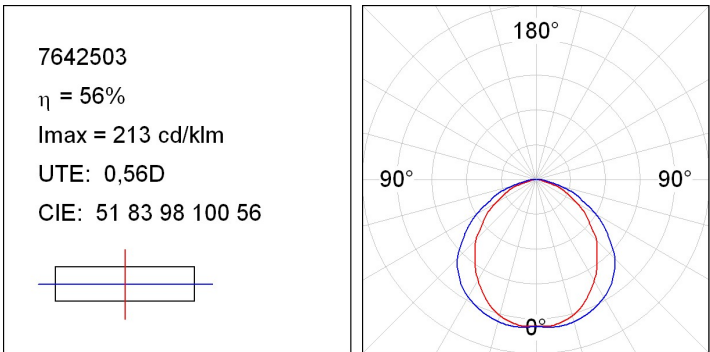
7642503

**FIL MED OPAL REC FI T5 2X14/24W GR.****Description:**

Recessed structure model FIL MED OPAL REC FI T5 2X14/24W GR., LAMP brand. Made of satin grey lacquered extruded aluminium and final staggered reflector. Model for T5 2X14/24W lamp and multi-power control gear included. With opal polycarbonate diffuser. IP42 protection rating. Insulation class I.

**Finish:** Gloss grey**Dimensions:** 628 x 142 x 90 mm**Weight:** 2.400 g**Installation:** Recessed**Recessing measures:** 633 x 130 x 110 mm**TECHNICAL SPECIFICATIONS:****Plum:** 34W/54W**Type:** T5/T16**Power:** 2X14/24W**Lampholder:** G5**Power Supply:** 230V-50HZ**Gear:** Electronic

PHOTOMETRIC DATA :



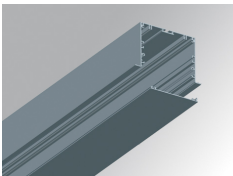
ACCESORIES :

Assembly



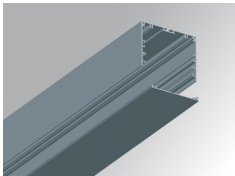
**Product code:**  
4806043

**Description:**  
ACC. INTM JOINT



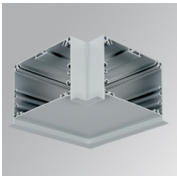
**Product code:**  
7605013

**Description:**  
FIL MED ACC. REC PROFILE X/MM GR.



**Product code:**  
7605103

**Description:**  
FIL MED ACC. COVER X/MM GR.



**Product code:**  
7605213

**Description:**  
FIL MED ACC. REC 90° CORNER GR.



**Product code:**  
7606423

**Description:**  
FIL MED ACC. REC END COVER GR.

