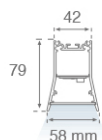
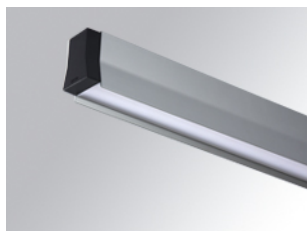


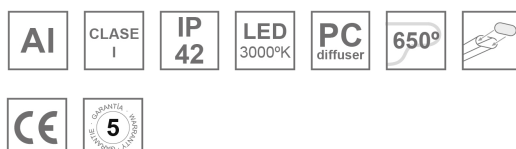
7041373

**DOT OPAL 2M 6400 WW AND.****Description:**

Suspended or mounted surface structure model DOT OPAL 2M 6400 WW AND., LAMP brand. Made of matt silver anodised extruded aluminium. Model for MID-POWER LED, warm white colour temperature and control gear included. With opal polycarbonate diffuser. IP42 protection rating. Insulation class I.

Finish: Anodized matte silver**Weight:** 3.784 g**Installation:** Suspended**TECHNICAL SPECIFICATIONS:**

Light output:	4.252 lm	°K :	3000
Plum:	67W	CRI :	80
Efficacy:	63,5 lm/w	MacAdam:	3
Type:	MID POWER SAMSUNG	Power Supply:	220-240V 50/60Hz
LED Lifetime:	50.000 L80	Gear:	Electronic
Power:	62W		

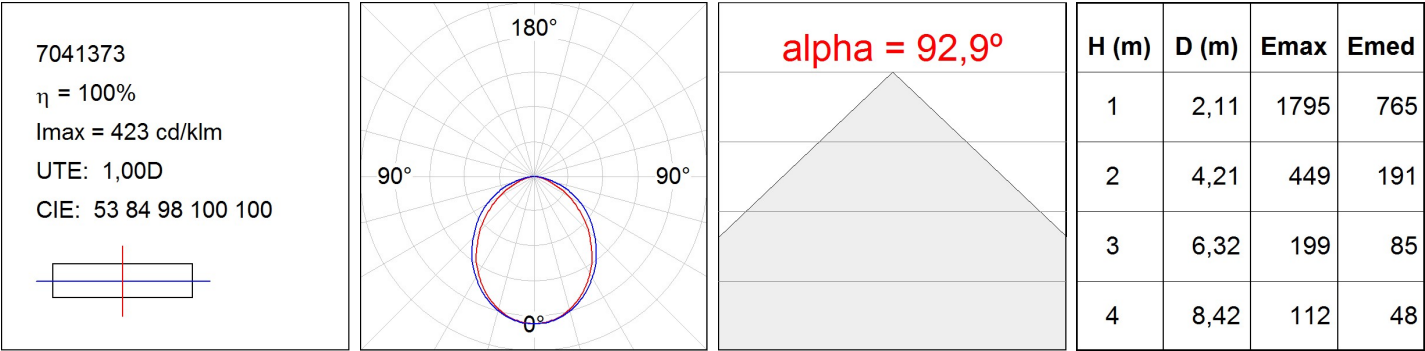
Light output tolerance +/- 10%

DOT SPOT

7041373

DOT OPAL 2M 6400 WW AND.

PHOTOMETRIC DATA :

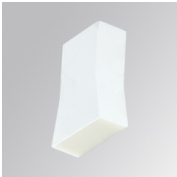


ACCESORIES :
Assembly



Product code:
4806043

Description:
ACC. INTM JOINT



Product code:
7000510

Description:
DOT ACC. END COVER WH.



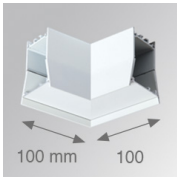
Product code:
7000511

Description:
DOT ACC. END COVER OG.



Product code:
7000512

Description:
DOT ACC. END COVER GRP.



Product code:
7000520
7000523

Description:
DOT ACC. 90° CORNER JOINT WH.
DOT ACC. 90° CORNER JOINT AND.



Product code:
7000530
7000533

Description:
DOT ACC. PROFILE X/MM WH.
DOT ACC. PROFILE X/MM AND.



Product code:
7000540
7000543

Description:
DOT ACC. COVER X/MM WH.
DOT ACC. COVER X/MM AND.



Product code:
9600990

Description:
ACC. ELECTROSTATICS WRIST STRAP

ACCESORIES :
Suspension



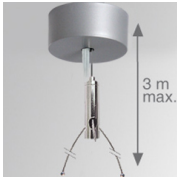
Product code:
9608633

Description:
ACC. Y 180MM STEEL CABLE NK.



Product code:
9628630

Description:
ACC. ELECMEC Y 180MM 3P SUSP WH.



Product code:
9628633

Description:
ACC. ELECMEC Y 180MM 3P SUSP GR.