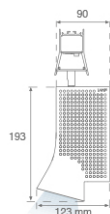
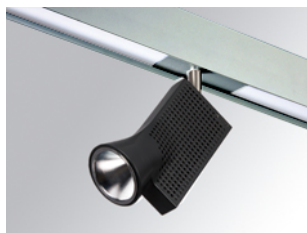


DOT SYSTEM SPOT

7001442



DOT SPOT 800 WW SP AND/GRP.

Description:

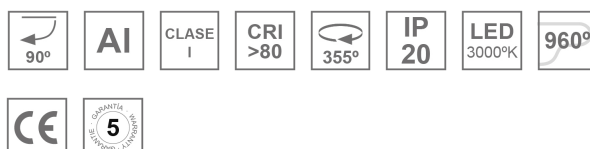
Multi-directional projection module to adapt to Dot structure, model DOT SPOT 800 WW SP AND/GRP., LAMP brand. Structure made of anodized extruded aluminium and spotlight made of graphite-lacquered injected aluminium. Passive heat dissipation for a proper thermal management. Model for COB LED, warm white colour temperature powered to AC current directly. With Spot reflector in high purity aluminium. Insulation class I.

Finish: Anodized matte silver

Weight: 910 g

Installation: Surface
TECHNICAL SPECIFICATIONS:

| | | | |
|----------------------|----------------|----------------------|----------------------------|
| Light output: | 838 lm | °K : | 3000 |
| Plum: | 8W | CRI : | 80 |
| Efficacy: | 99,8 lm/w | MacAdam: | 3 |
| Type: | COB OSRAM | Power Supply: | 220-240V 50/60Hz |
| LED Lifetime: | 50.000 L80 B10 | Gear: | Without gear (main supply) |
| Power: | 8.4W | | |

Light output tolerance +/- 10%


7001442 DOT SPOT 800 WW SP AND/GRP.

PHOTOMETRIC DATA :

