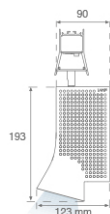
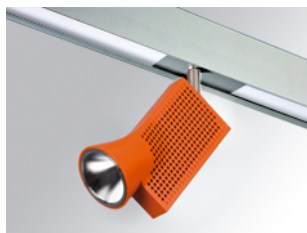


DOT SYSTEM SPOT

7001441



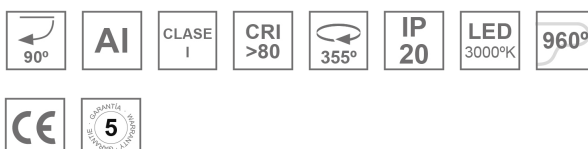
DOT SPOT 800 WW SP AND/OG.

Description:

Multi-directional projection module to adapt to Dot structure, model DOT SPOT 800 WW SP AND/OG., LAMP brand. Structure made of anodized extruded aluminium and spotlight made of orange-lacquered injected aluminium. Passive heat dissipation for a proper thermal management. Model for COB LED, warm white colour temperature powered to AC current directly. With Spot reflector in high purity aluminium. Insulation class I.

Finish: Anodized matte silver**Weight:** 910 g**Installation:** Surface**TECHNICAL SPECIFICATIONS:**

Light output:	838 lm	°K :	3000
Plum:	8W	CRI :	80
Efficacy:	99,8 lm/w	MacAdam:	3
Type:	COB OSRAM	Power Supply:	220-240V 50/60Hz
LED Lifetime:	50.000 L80 B10	Gear:	Without gear (main supply)
Power:	8.4W		

Light output tolerance +/- 10%

7001441 DOT SPOT 800 WW SP AND/OG.

PHOTOMETRIC DATA :

