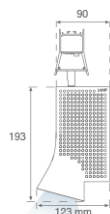
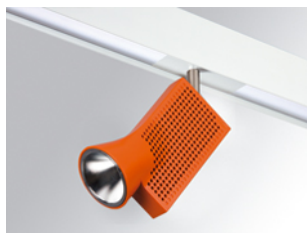


DOT SYSTEM SPOT

7001431



DOT SPOT 2000 WW SP WH/OG.

Description:

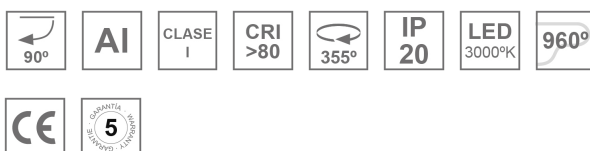
Multi-directional projection module to adapt to Dot structure, model DOT SPOT 2000 WW SP WH/OG., LAMP brand. Structure made of white-lacquered extruded aluminium and spotlight made of orange-lacquered injected aluminium. Passive heat dissipation for a proper thermal management. Model for COB LED, warm white colour temperature powered to AC current directly. With Spot reflector in high purity aluminium. Insulation class I.

Finish: Matte white RAL 9010

Weight: 910 g

Installation: Surface
TECHNICAL SPECIFICATIONS:

Light output:	1.775 lm	°K :	3000
Plum:	22W	CRI :	80
Efficacy:	90,6 lm/w	MacAdam:	3
Type:	COB OSRAM	Power Supply:	220-240V 50/60Hz
LED Lifetime:	50.000 L80 B30	Gear:	Without gear (main supply)
Power:	20W		

Light output tolerance +/- 10%


7001431 DOT SPOT 2000 WW SP WH/OG.

PHOTOMETRIC DATA :

