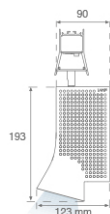
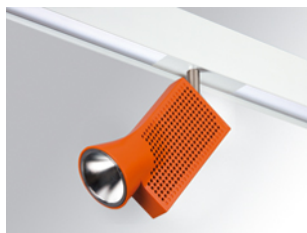


## DOT SYSTEM SPOT

7001421



## DOT SPOT 800 WW SP WH/OG.

**Description:**

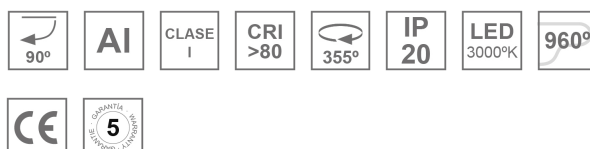
Multi-directional projection module to adapt to Dot structure, model DOT SPOT 800 WW SP WH/OG., LAMP brand. Structure made of white-lacquered extruded aluminium and spotlight made of orange-lacquered injected aluminium. Passive heat dissipation for a proper thermal management. Model for COB LED, warm white colour temperature powered to AC current directly. With Spot reflector in high purity aluminium. Insulation class I.

**Finish:** Matte white RAL 9010

**Weight:** 910 g

**Installation:** Surface
**TECHNICAL SPECIFICATIONS:**

<b>Light output:</b>	838 lm	<b>°K :</b>	3000
<b>Plum:</b>	8W	<b>CRI :</b>	80
<b>Efficacy:</b>	99,8 lm/w	<b>MacAdam:</b>	3
<b>Type:</b>	COB OSRAM	<b>Power Supply:</b>	220-240V 50/60Hz
<b>LED Lifetime:</b>	50.000 L80 B10	<b>Gear:</b>	Without gear (main supply)
<b>Power:</b>	8.4W		

*Light output tolerance +/- 10%*


7001421 DOT SPOT 800 WW SP WH/OG.

PHOTOMETRIC DATA :

