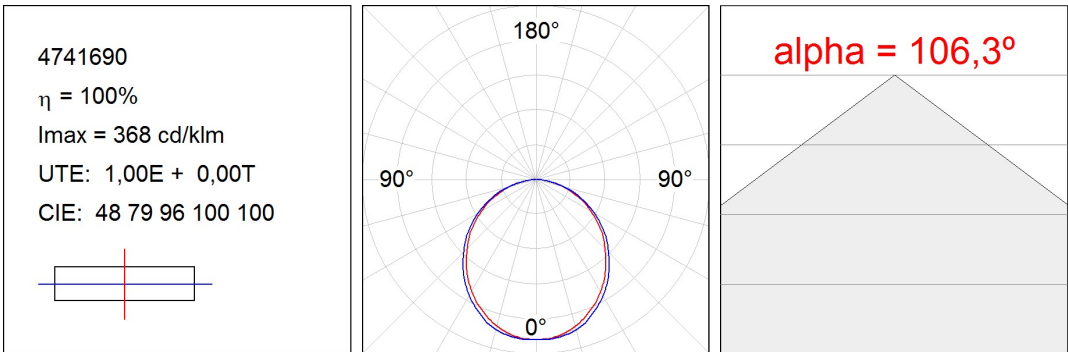


4781690

**FIL + LED OPAL REC 2600 WW DALI WH.****Description:****Finish:** Matte white RAL 9010**Dimensions:** 1.162 x 89 x 70 mm**Weight:** 2.662 g**Installation:** Recessed**Recessing measures:** 1,174 x 78 x 85 mm**TECHNICAL SPECIFICATIONS:****Light output:** 1.992 lm**°K :** 3000**Plum:** 19,2W**CRI :** 80**Efficacy:** 103,8 lm/w**MacAdam:** 3**Type:** MID POWER PHILIPS**Power Supply:** 220-240V 50/60Hz**LED Lifetime:** 60.000 L80 B10**Gear:** Adjustable DALI**Power:** 17W**Light output tolerance +/- 10%**

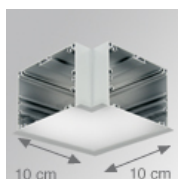
PHOTOMETRIC DATA :



---

**ACCESORIES :**

**Assembly**

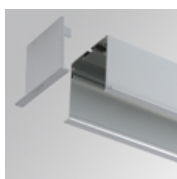


**Product code:**

4700120

**Description:**

FIL + ACC. REC 90° CORNER WH.



**Product code:**

4700680

**Description:**

FIL + ACC. REC END COVER WH.



**Product code:**

4806043

**Description:**

ACC. INTM JOINT



**Product code:**

9600990

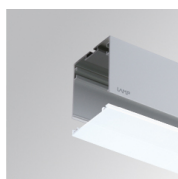
**Description:**

ACC. ELECTROSTATICS WRIST STRAP

---

**ACCESORIES :**

**Optical**



**Product code:**

4700400

**Description:**

FIL + ACC. OPAL DIFFUSER X/MM

